



# Winnebago County Health Department



## Weekly Influenza Surveillance Report CDC Week 23 June 5th-June 11th 2011

### In Brief:

#### **Mortality**

Confirmed deaths from Pneumonia/Influenza Week 23: 1  
Percent of deaths due to Pneumonia/Influenza: **2.27%**  
Baseline—**1.8%**, Epidemic—**7.9%**

#### **Influenza-Like Illness Surveillance**

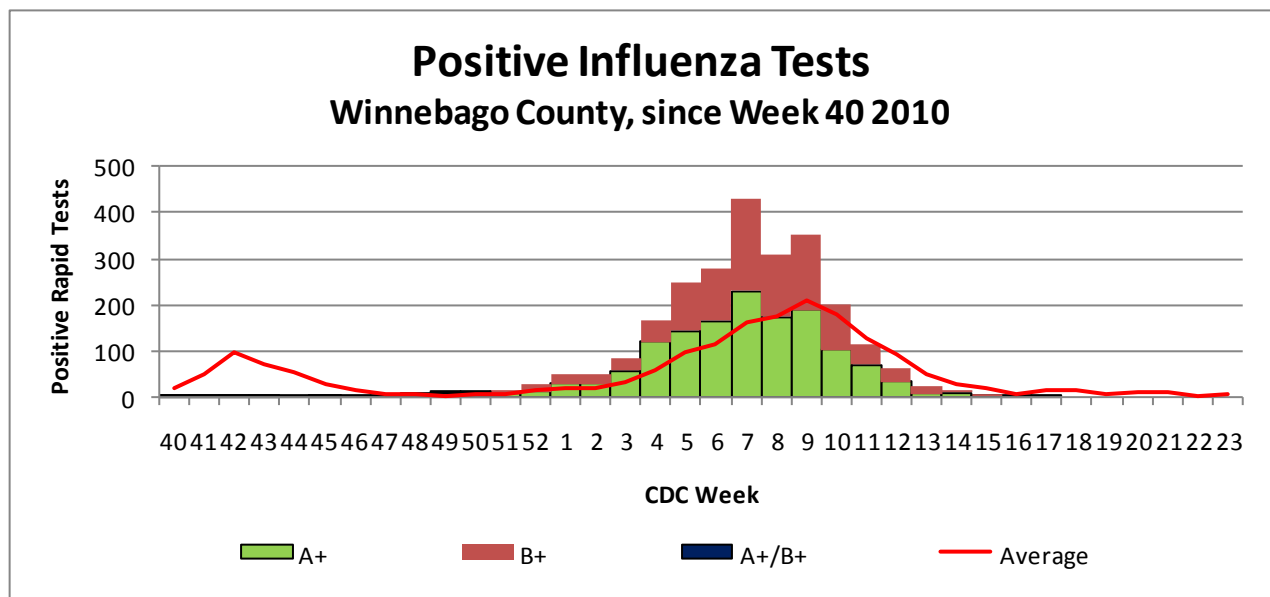
Sentinel Site ILI rate (average of 3 sites participating)—week ending June 11th:  
**0.33%**

#### **Pneumonia Hospital Admissions**

Week Ending June 11th: **12**

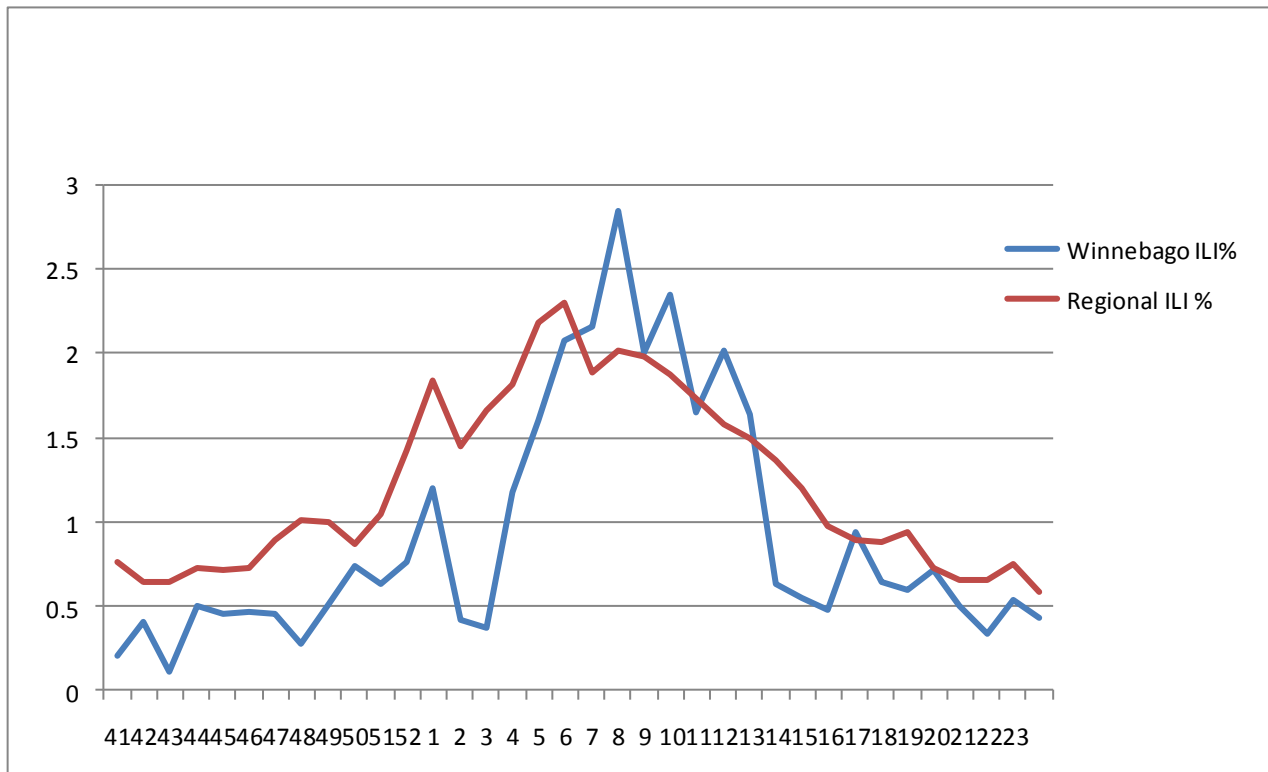
Previous Week Ending June 4th: **22**

Note: Numbers include 2 hospitals and are one week behind due to reporting methods. One hospital has not yet reported numbers for CDC week #23 so these are the most up to date numbers available.

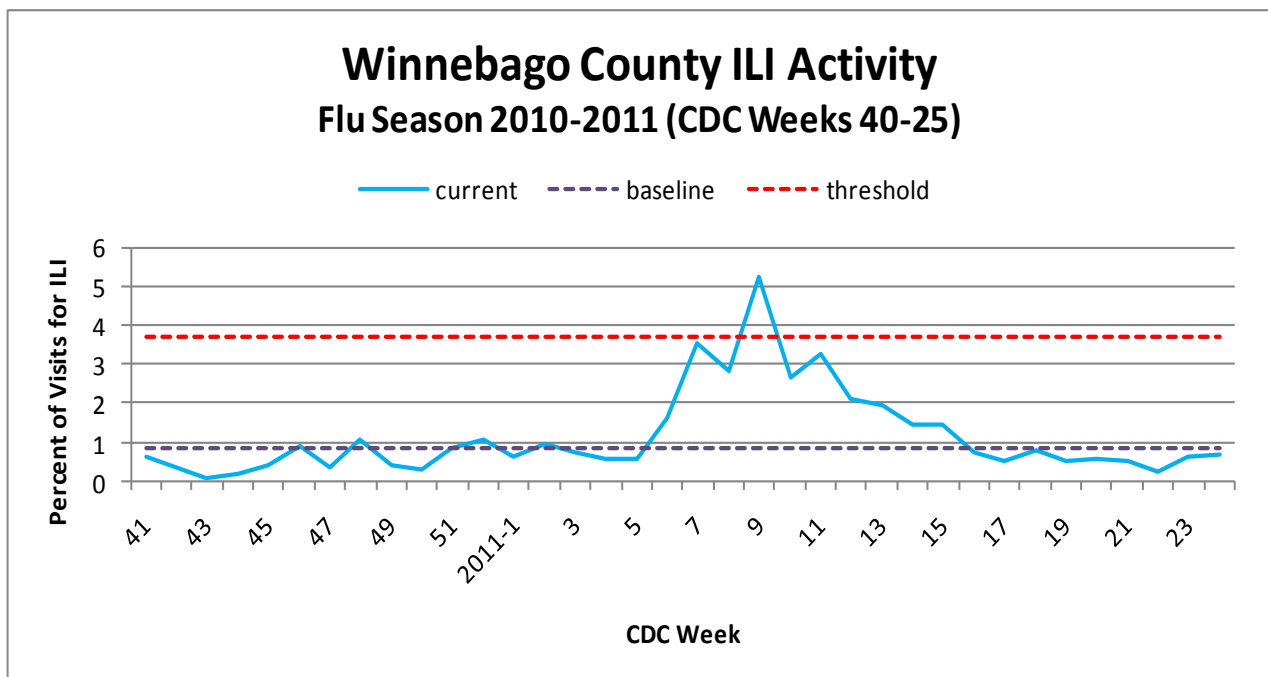


**Figure 1** displays the current number of rapid flu cases reported to our department for the 2010-2011 flu season (broken down by influenza sub-typing) compared to a 4-year historical average (the red line). Ending numbers for CDC Week 23 in Winnebago County continue at 2476 total positive rapid flu reported for this flu season with no new cases reported this week. The historical average for Week 23 is currently 5.75 while once again we had no flu cases reported.

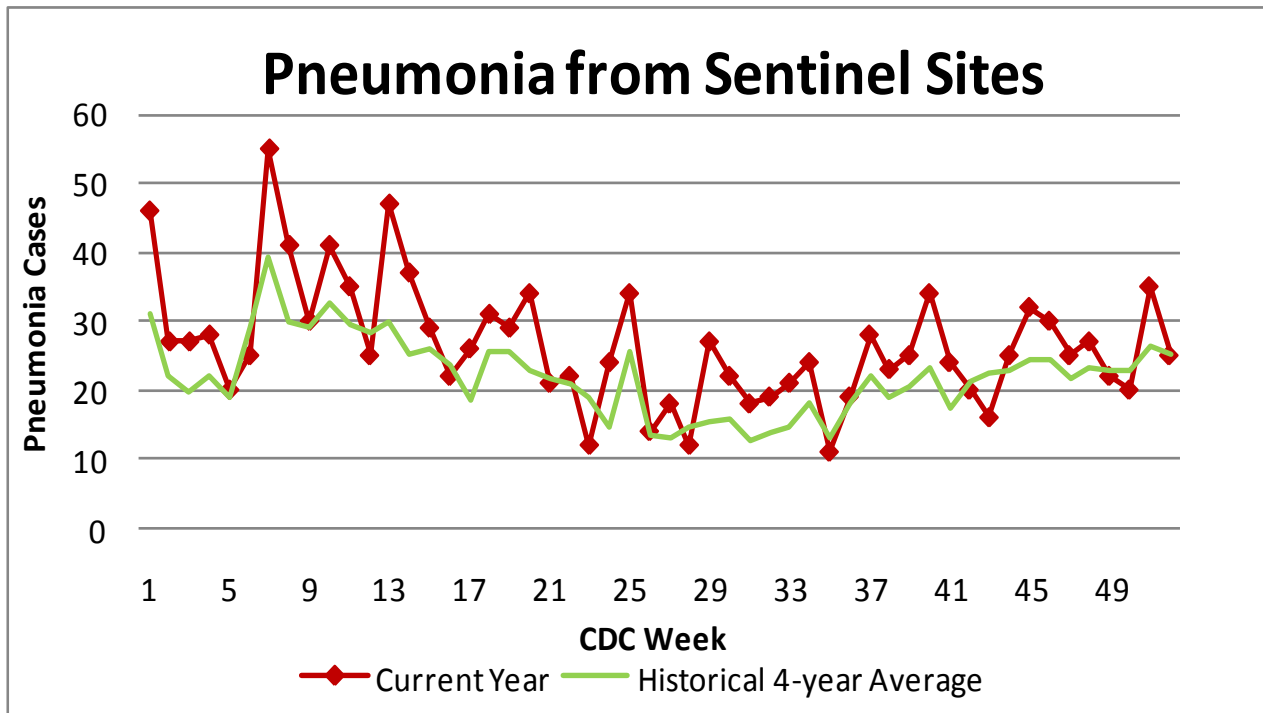
## Weekly Percentage of Visits as Identified by Essence



**Figure 2** displays the weekly percentage of Influenza-Like Illness (ILI) as identified by the Essence Syndromic Surveillance System. The blue line shows percentage of ILI Emergency Department visits in Winnebago County from our two participating hospitals and the red line shows the regional ILI percentage for all counties participating in ESSENCE. For CDC Week 23, our county is at a rate of **0.43% which is below the regional ILI percent 0.59% for Week 23.**



**Figure 3** is the representation of all visits from our sentinel sites not participating in Essence for ILI. The average among our two sentinel sites for ILI % for Week 23 of **0.33%**. The ILI percents from our three sentinel sites continues on a steady decrease. Our weekly average has dropped below the seasonal baseline of 0.84% for the seventh week in a row.



**Figure 4** compares the current number of pneumonia hospital admissions (red line) against the 4-year historical average (the green line). The first 5 weeks of the year reported above the historical average and dropped slightly below the 4-year average in week 6. Weeks 7 –11 brought us back over the 4-year averages and week 12 came in below the historical average. Weeks 13, 14, and 15 were above the 4-year average and week 16 was slightly below the 4-year average. CDC Weeks 17,18,19, 20, 21 came in just above the 4-year historical averages and for CDC Week 23, we were below the 4-year historical average of 19 with 12 hospital admittances reported (Note that we are missing numbers from one of our hospitals). Numbers for weeks 21, 22, and 23 for 2011 are still arriving.

Number of confirmed H1N1 influenza cases to date in Winnebago County (2011): 3 (IDPH)

Number of confirmed Novel H3N2 influenza cases to date in Winnebago County (2011): 5 (IDPH)

Number of confirmed Novel Influenza B cases for to date in Winnebago County (2011): 11 (IDPH)

### **Outside the County:**

**(No new data on Influenza Activity and ILI by state was reported for CDC Week #22)**

Illinois influenza activity (as of Week 20):  
**NO Activity**

ILI Activity Level (Influenza like Illnesses reported)  
Illinois is **MINIMAL** on the scale



**Questions/Comments?**

Amanda Mehl, MPH  
Epidemiologist  
Health Promotion and Protection  
Winnebago County  
Health Department  
401 Division Street  
Rockford, IL 61104  
815-720-4215



**Public Health**  
Prevent. Promote. Protect.