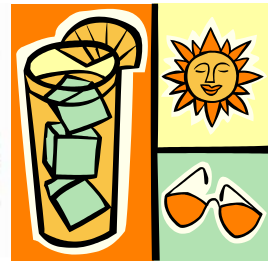




Winnebago County Health Department



Weekly Influenza Surveillance Report CDC Week 32 August 7th-August 13th 2011

In Brief:

Mortality

Confirmed deaths from Pneumonia/Influenza Week 32: 2
Percent of deaths due to Pneumonia/Influenza: **4%**

Influenza-Like Illness Surveillance

Sentinel Site ILI rate -Week 32 ending August 13th: **0.32%**

Pneumonia Hospital Admissions

Week Ending August 13th: **19**

Previous Week Ending August 6th: **14**

Note: Numbers include 2 hospitals and are one week behind due to reporting methods.

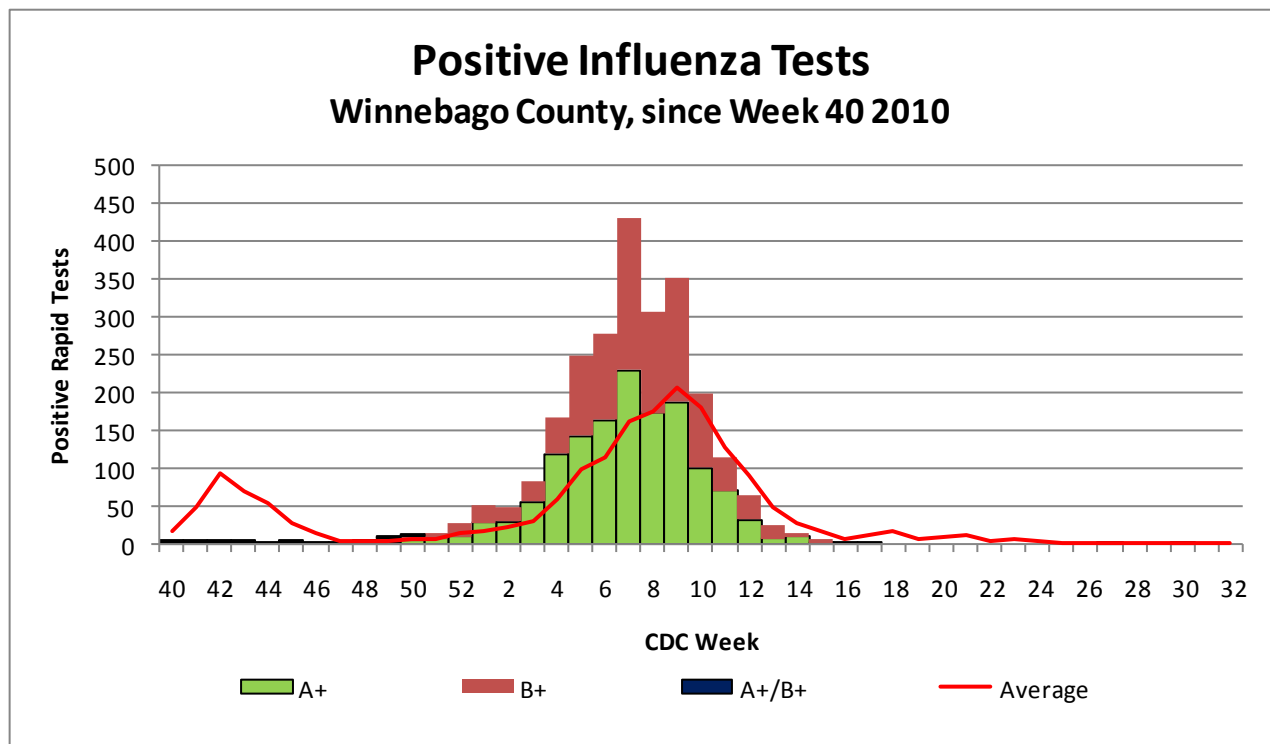


Figure 1 displays the current number of rapid flu cases reported to our department and broken down by influenza sub-typing compared to a 4-year historical average (the red line). Ending numbers for CDC Week 32 in Winnebago County continue at 2478 total positive rapid flu reported for this flu season. No cases of Influenza was reported for Week 32 which matches the historical average of no Influenza cases reported as well for this week over the past four years.

Weekly Percentage of Visits as Identified by Essence

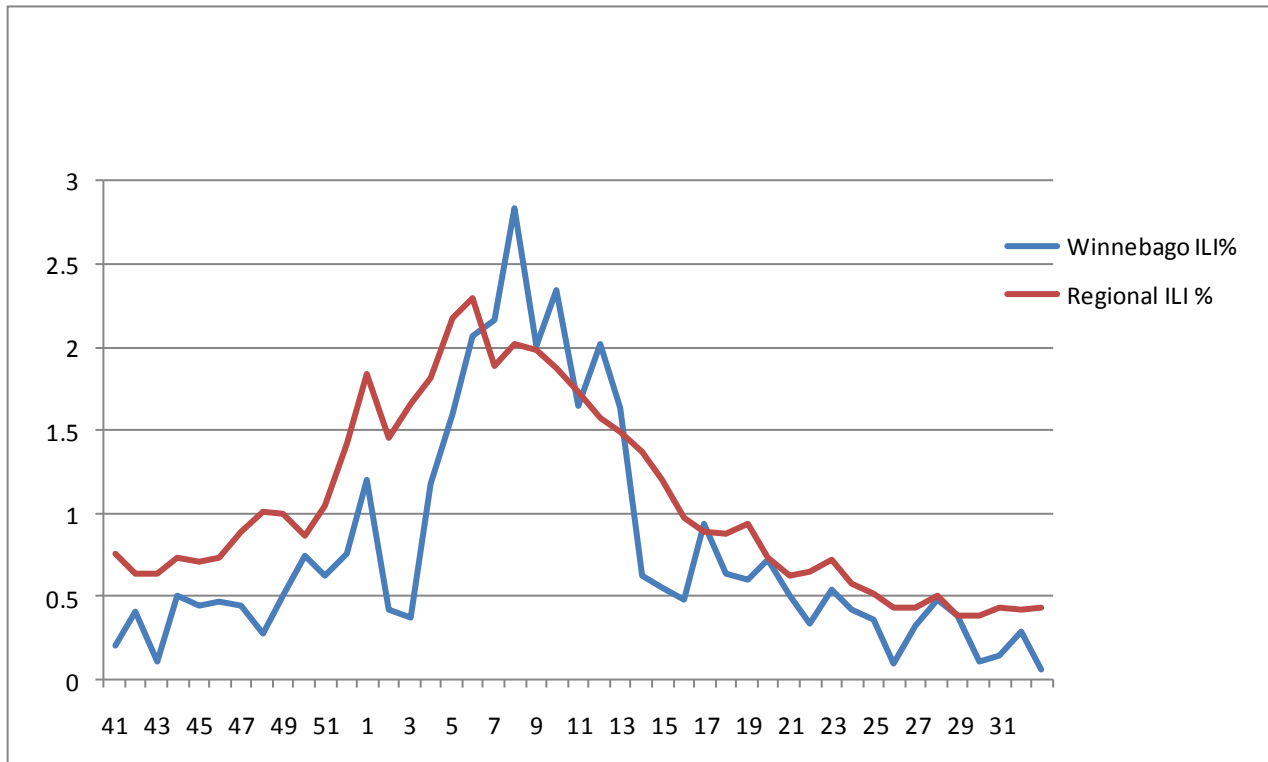


Figure 2 displays the weekly percentage of Influenza-Like Illness (ILI) as identified by the Essence Syndromic Surveillance System. The blue line shows percentage of ILI Emergency Department visits in Winnebago County from our two participating hospitals and the red line shows the regional ILI percentage for all counties participating in ESSENCE. For CDC Week 32, Winnebago county reported an ILI percent of **0.06**, below the regional ILI percent of **0.43** for Week 32.

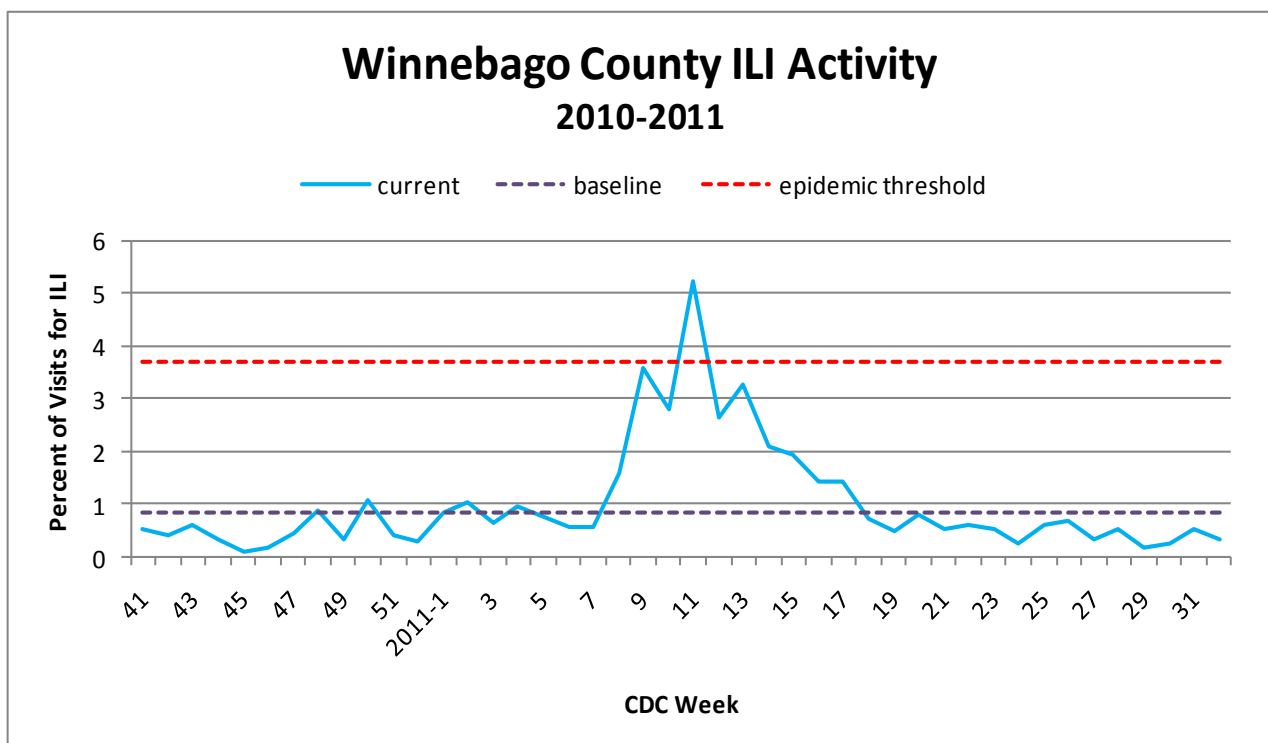


Figure 3 is the representation of all visits from our sentinel sites not participating in Essence for ILI. There was no ILI activity among the three sites reported for CDC Week 32.

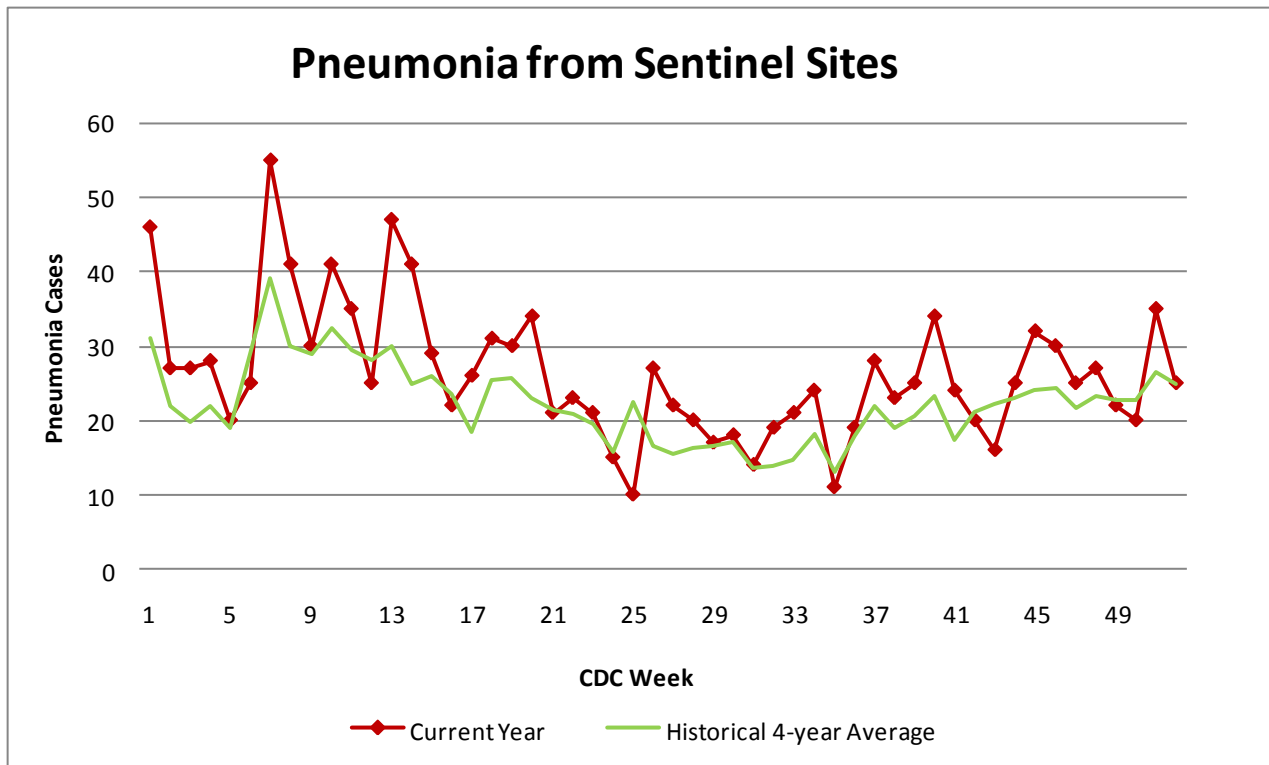


Figure 4 compares the current number of pneumonia hospital admissions (red line) against the 4-year historical average (the green line). For CDC Week 32, we were above the 4-year historical average of 14 with 19 total hospital admittances reported. Numbers for weeks 30, 31, and 32 for 2011 are still arriving.

Number of confirmed H1N1 influenza cases to date in Winnebago County (2011): 3 (IDPH)

Number of confirmed Novel H3N2 influenza cases to date in Winnebago County (2011): 5 (IDPH)

Number of confirmed Novel Influenza B cases for to date in Winnebago County (2011): 11 (IDPH)

Outside the County:

(No new data on Influenza Activity and ILI by state was reported for CDC Week #22)

Illinois influenza activity (as of Week 20):
NO Activity

ILI Activity Level (Influenza like Illnesses reported)
Illinois is **MINIMAL** on the scale



Questions/Comments?

Amanda Mehl, MPH
Epidemiologist
Health Promotion and Protection
Winnebago County
Health Department
401 Division Street
Rockford, IL 61104
815-720-4215



Public Health
Prevent. Promote. Protect.