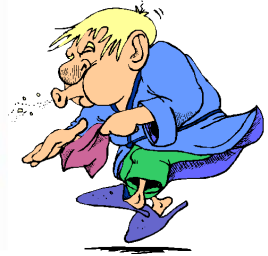




Winnebago County Health Department



Weekly Influenza Surveillance Report CDC Week 42 October 16th-October 22nd, 2011

In Brief:

Mortality

Confirmed deaths from Pneumonia/Influenza Week 42: **2**

Percent of deaths due to Pneumonia/Influenza Week 42: **3.39%**

Influenza-Like Illness Surveillance

Sentinel Site ILI rate -Week 42 ending October 22nd: **0.26%**

Pneumonia Hospital Admissions

Week 42 Ending October 22nd: **17**

Previous Week 41 Ending October 15th: **9**

Note: Numbers include 2 hospitals and are one week behind due to reporting methods.

School Attendance

Week 42 Ending October 22nd: **93.61%**

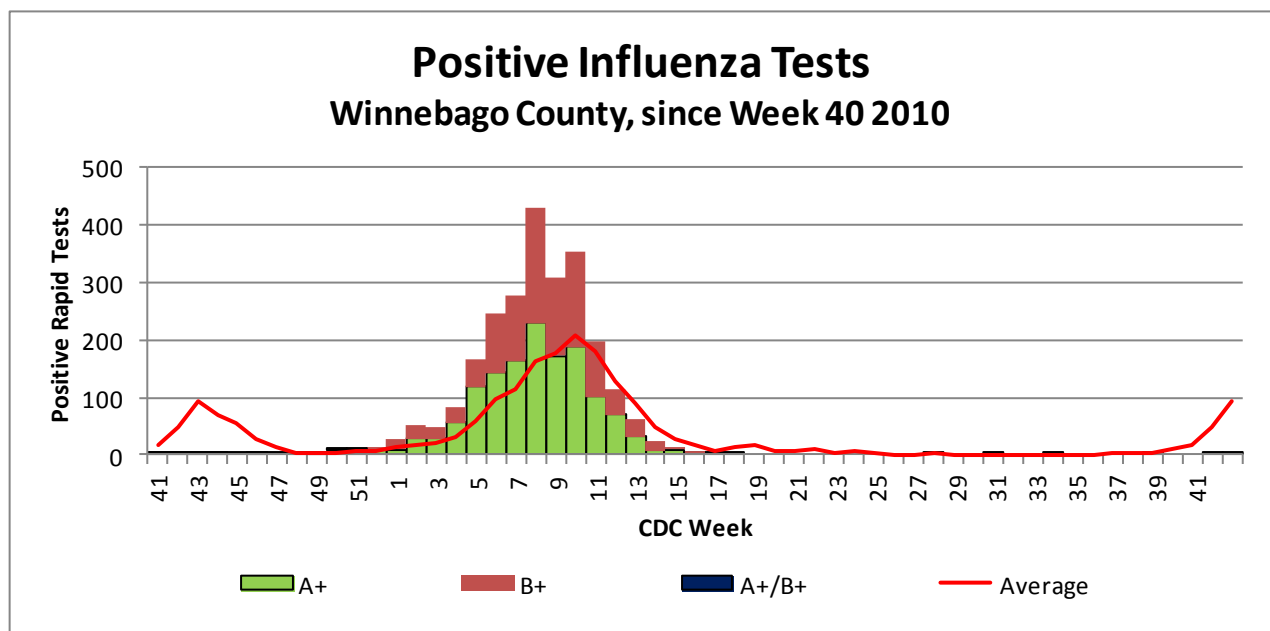


Figure 1 displays the current number of rapid flu cases reported to our department and broken down by influenza sub-typing compared to a 4-year historical average (the red line). 5 total A positive rapid flu cases have been reported for this 2011-12 flu season. 2 of these cases of Influenza reported for Week 42, which is well below the historical average of 95 cases.

Weekly Percentage of Visits as Identified by Essence

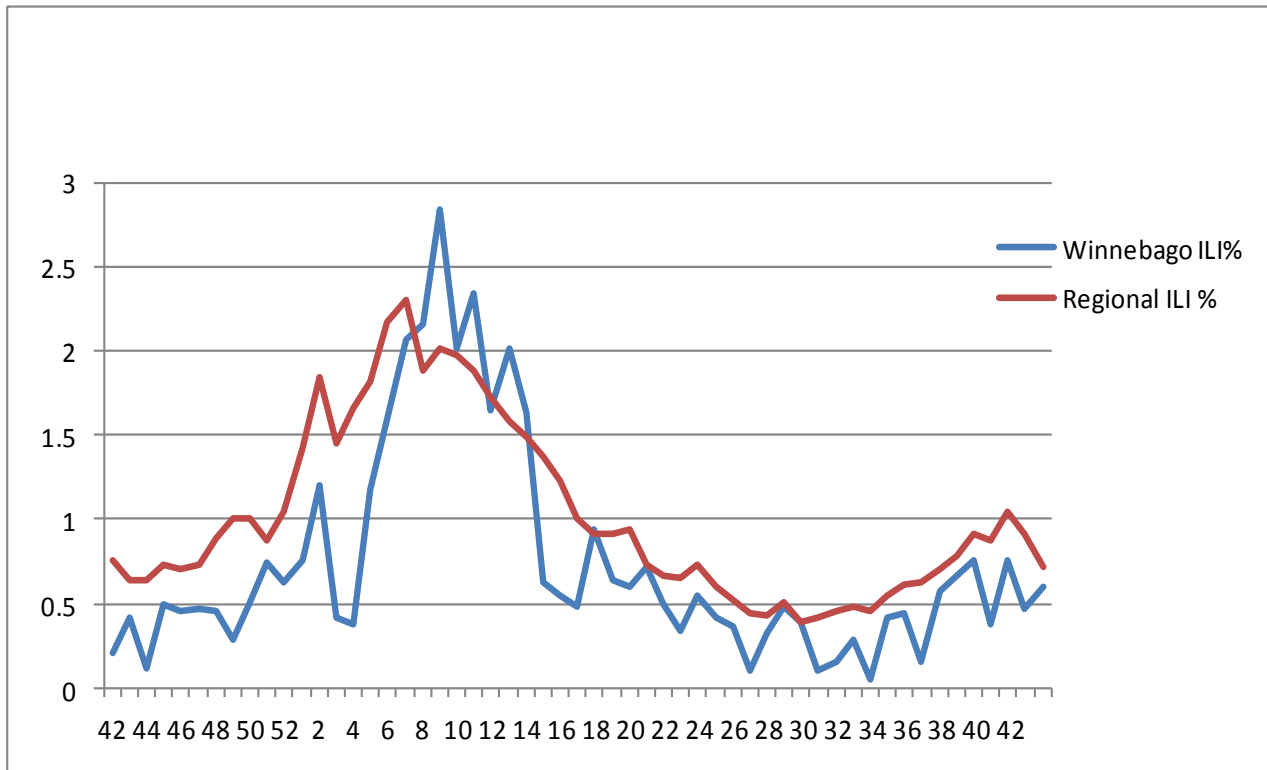


Figure 2 displays the weekly percentage of Influenza-Like Illness (ILI) as identified by the Essence Syndromic Surveillance System. The blue line shows percentage of ILI Emergency Department visits in Winnebago County from our two participating hospitals and the red line shows the regional ILI percentage for all counties participating in ESSENCE. For CDC Week 42, Winnebago county reported an ILI percent of **0.6**, slightly below the regional ILI percent of **0.72**.

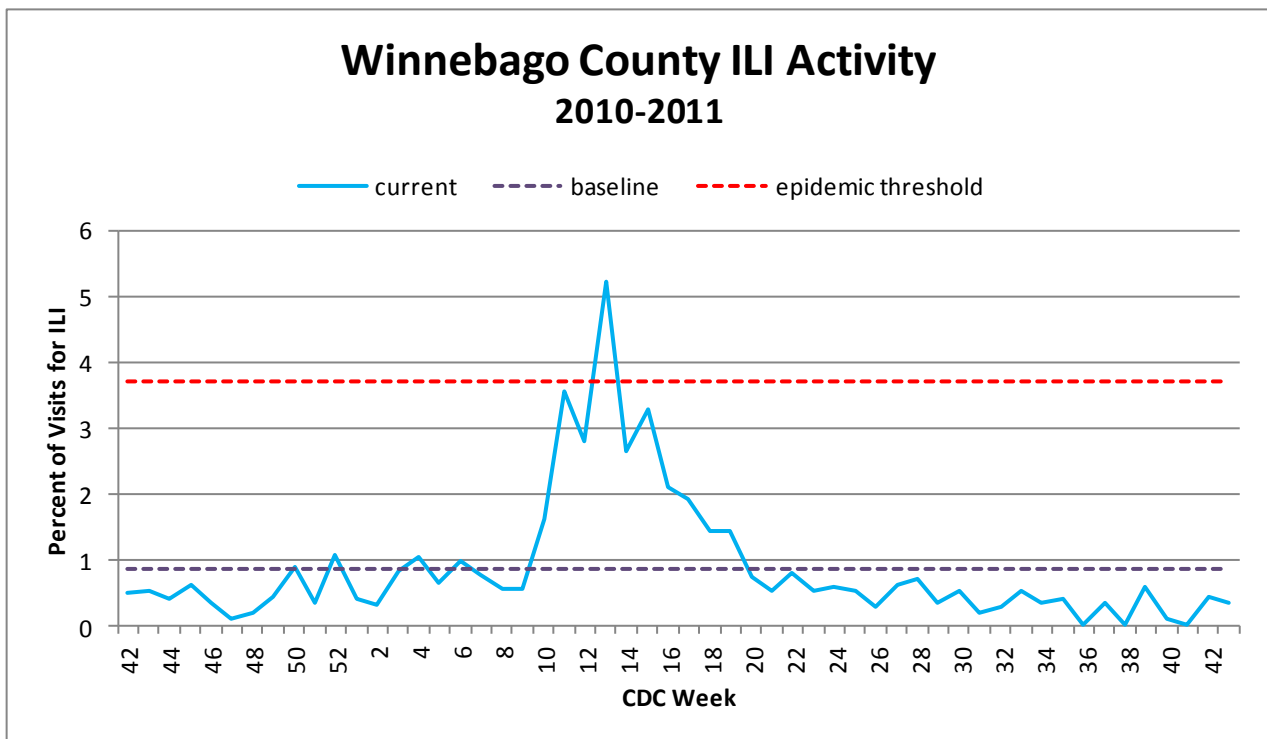


Figure 3 is the representation of all visits from our sentinel sites not participating in Essence for ILI. ILI activity was very low at 0.26% among the three sites for CDC Week 42.

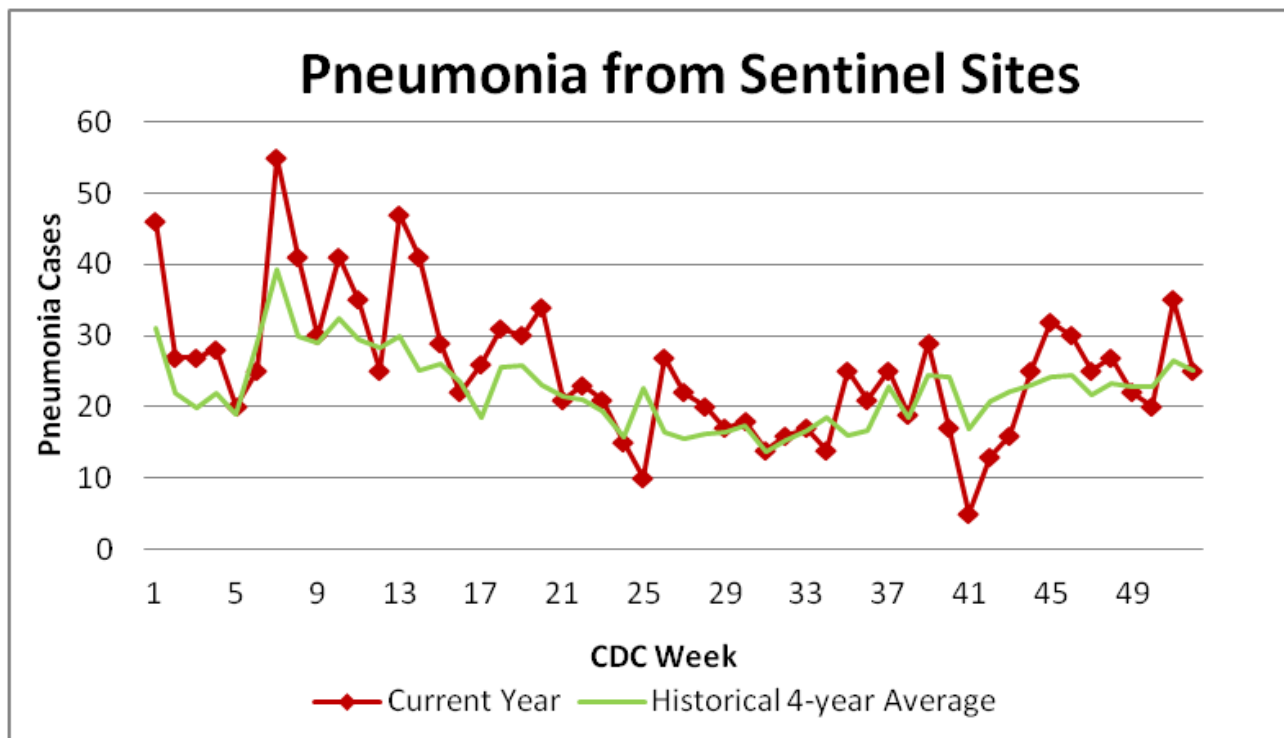


Figure 4 compares the current number of pneumonia hospital admissions (red line) against the 4-year historical average (the green line). For CDC Week 42, we were below the 4-year historical average of 20.75 with only 17 total hospital admittances reported. Note that all data are preliminary and numbers for weeks 40, 41, and 42 for 2011 are still arriving.

Outside the County:

Illinois influenza activity (as of Week 42):

Illinois reported NO INFLUENZA ACTIVITY

- Sporadic influenza activity was reported by the District of Columbia, Puerto Rico, the U.S. Virgin Islands, and 18 states (Alaska, Arkansas, California, Colorado, Connecticut, Florida, Hawaii, Indiana, Louisiana, Massachusetts, Minnesota, Nevada, New York, North Carolina, Ohio, Pennsylvania, Texas, and Wisconsin).
- No influenza activity was reported by Guam and 32 states (Alabama, Arizona, Delaware, Georgia, Idaho, Illinois, Iowa, Kansas, Kentucky, Maine, Maryland, Michigan, Mississippi, Missouri, Montana, Nebraska, New Hampshire, New Jersey, New Mexico, North Dakota, Oklahoma, Oregon, Rhode Island, South Carolina, South Dakota, Tennessee, Utah, Vermont, Virginia, Washington, West Virginia, and Wyoming).



Questions/Comments?

Amanda Mehl, MPH
Epidemiologist
Health Promotion and Protection
Winnebago County
Health Department
401 Division Street
Rockford, IL 61104
815-720-4215



Public Health
Prevent. Promote. Protect.

ILI Activity Level (Influenza like Illnesses reported Week 42)

Illinois is **MINIMAL** on the scale