



Winnebago County Health Department



Weekly Influenza Surveillance Report CDC Week 47 November 20th-November 26th, 2011

In Brief:

Mortality

Confirmed deaths from Pneumonia/Influenza Week 47: **4**

Percent of deaths due to Pneumonia/Influenza Week 47: **9.52%**

Influenza-Like Illness Surveillance

Sentinel Site ILI rate -Week 47 ending November 26th: **0 ILI reported**

Pneumonia Hospital Admissions

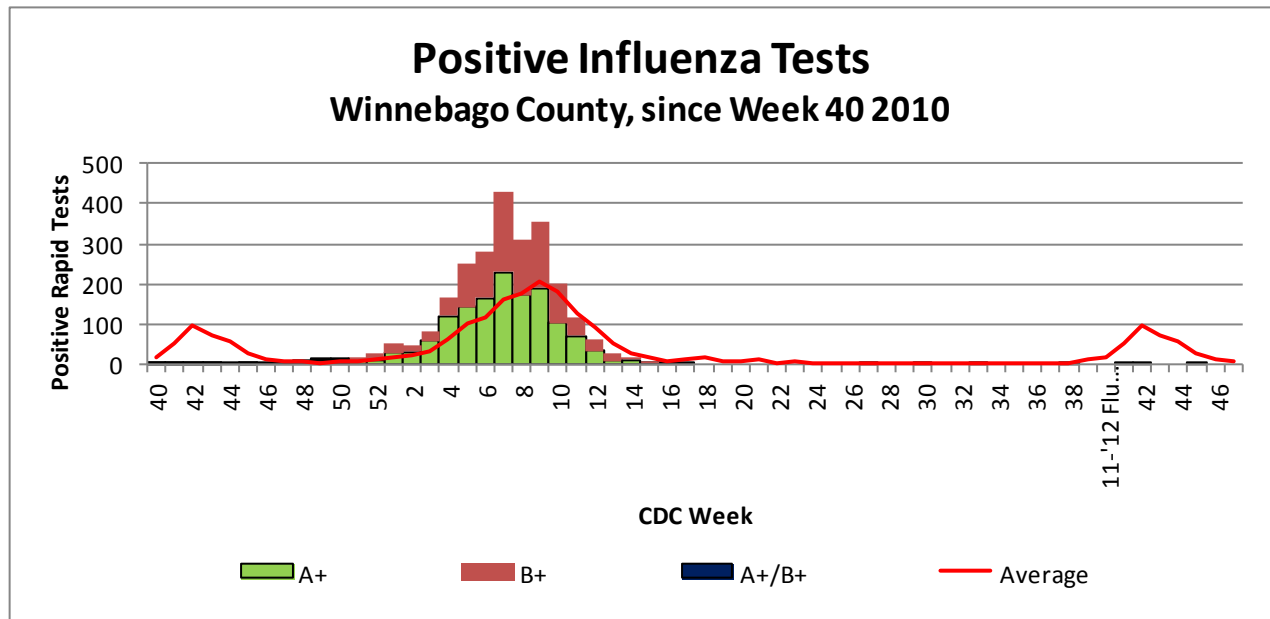
Week 47 Ending November 26th: **21**

Previous Week 46 Ending November 19th: **22**

Note: Numbers include 2 hospitals and are one week behind due to reporting methods.

School Attendance

Week 47 Ending November 26th: **92.65%**



Weekly Percentage of Visits as Identified by Essence

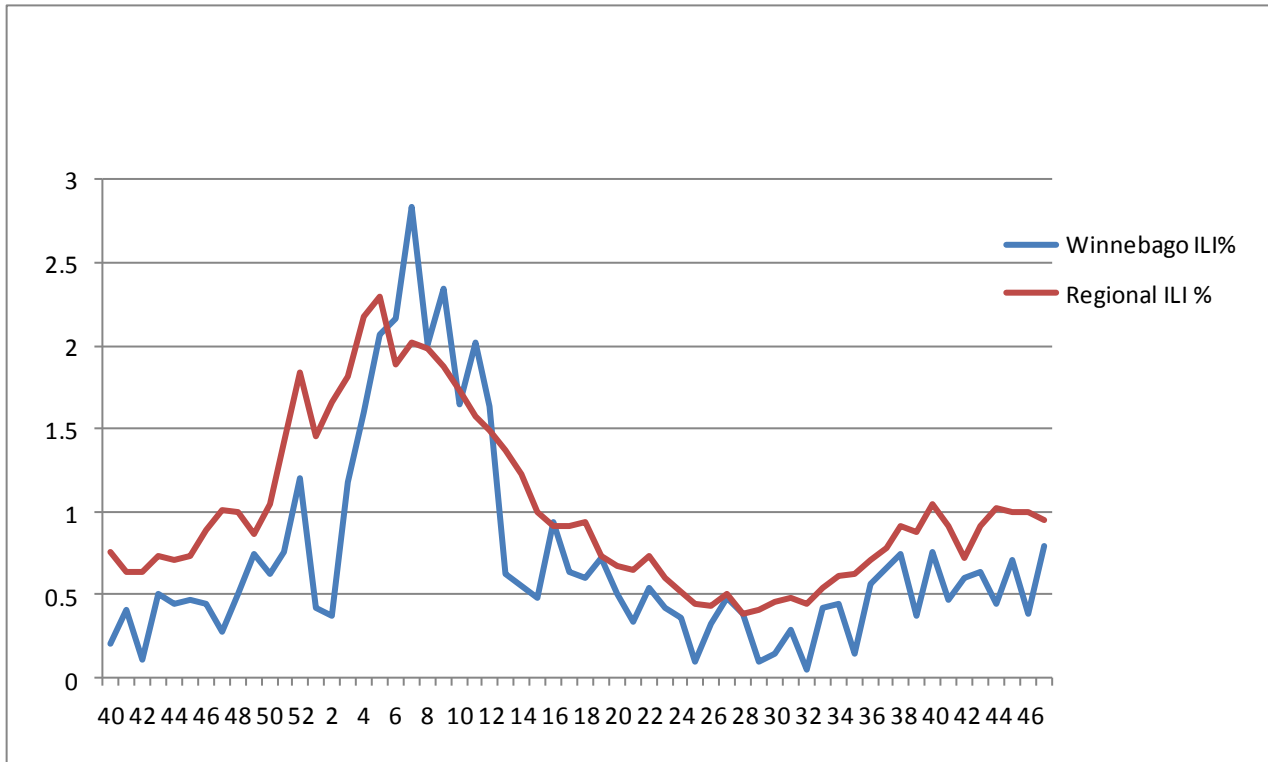


Figure 2 displays the weekly percentage of Influenza-Like Illness (ILI) as identified by the Essence Syndromic Surveillance System. The blue line shows percentage of ILI Emergency Department visits in Winnebago County from our two participating hospitals and the red line shows the regional ILI percentage for all counties participating in ESSENCE. For CDC Week 47, Winnebago county reported an ILI percent of **0.8**, slightly below the regional ILI percent of **0.95**.

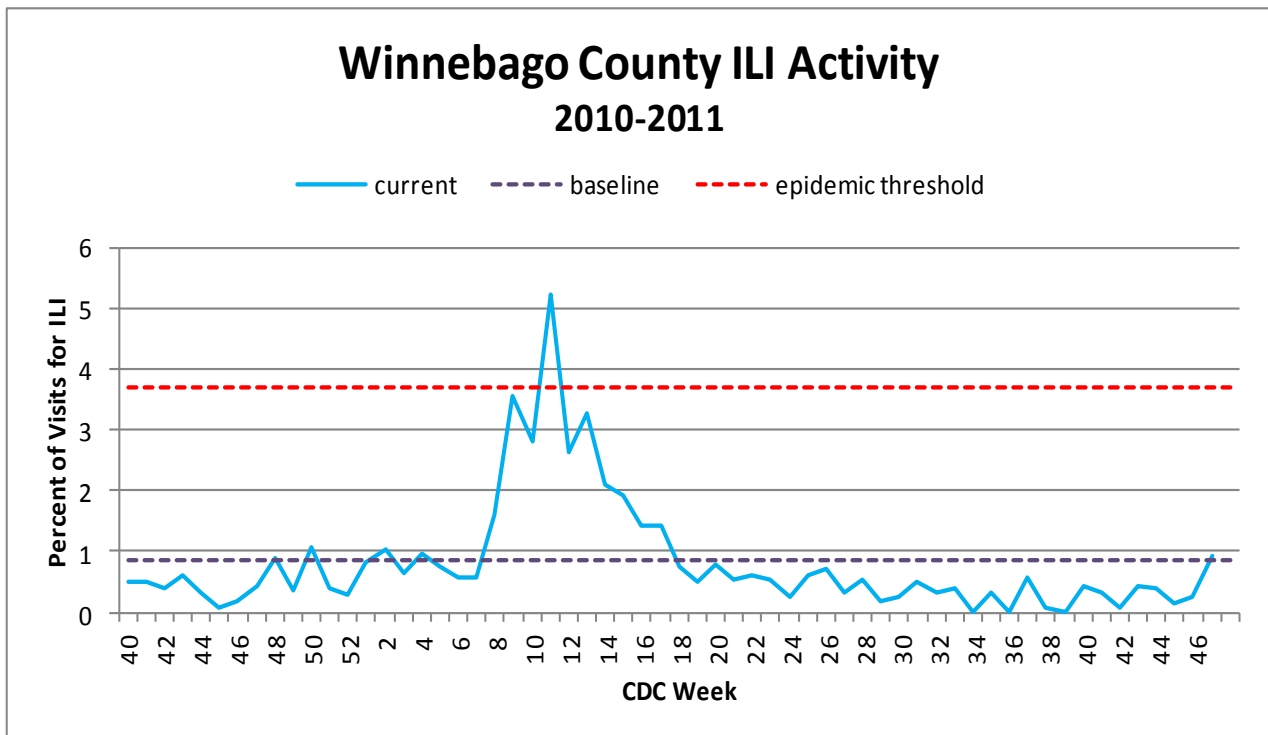


Figure 3 is the representation of all visits from our sentinel sites not participating in Essence for ILI. There was no ILI activity among the three sites for CDC Week 47.

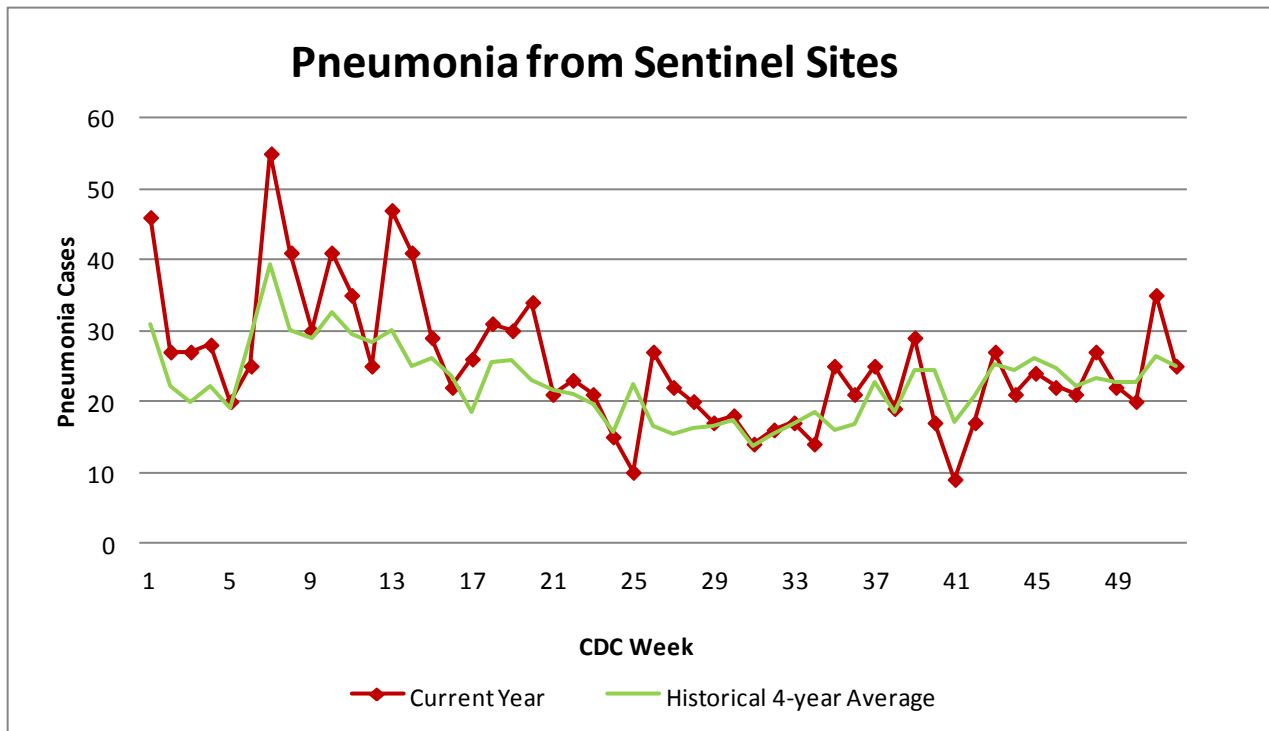


Figure 4 compares the current number of pneumonia hospital admissions (red line) against the 4-year historical average (the green line). For CDC Week 47, we are slightly below the 4-year historical average of 22.25 with 21 total hospital admittances reported. Note that all data are preliminary and numbers for weeks 45, 46, and 47 for 2011 are still arriving.

Outside the County:

Illinois influenza activity (as of Week 47):

Illinois reported sporadic INFLUENZA ACTIVITY

During week 47, the following influenza activity was reported:

- Local influenza activity was reported by one state (Massachusetts).
- Sporadic influenza activity was reported by the District of Columbia, Guam, and 29 states (Alaska, Arkansas, California, Colorado, Connecticut, Florida, Hawaii, Illinois, Indiana, Iowa, Kentucky, Louisiana, Minnesota, Mississippi, Nebraska, Nevada, New Mexico, New York, North Dakota, Ohio, Pennsylvania, Rhode Island, South Carolina, Texas, Utah, Washington, West Virginia, and Wisconsin).
- No influenza activity was reported by the U.S. Virgin Islands and 21 states (Alabama, Arizona, Delaware, Georgia, Idaho, Kansas, Maine, Maryland, Michigan, Missouri, Montana, New Hampshire, New Jersey, North Carolina, Oklahoma, Oregon, South Dakota, Tennessee, Vermont, Virginia, and Wyoming).
- Puerto Rico did not report.



Questions/Comments?

Amanda Mehl, MPH
Epidemiologist
Health Promotion and Protection
Winnebago County
Health Department
401 Division Street
Rockford, IL 61104
815-720-4215



Public Health
Prevent. Promote. Protect.

ILI Activity Level (Influenza like Illnesses reported Week 47)

Illinois is **MINIMAL** on the scale