



## Weekly Influenza Surveillance Report CDC Week 52 December 25th-December 31st, 2011

### In Brief:

#### **Mortality**

Confirmed deaths from Pneumonia/Influenza Week 52: **1**  
Percent of deaths due to Pneumonia/Influenza Week 52: **1.85%**

#### **Influenza-Like Illness Surveillance**

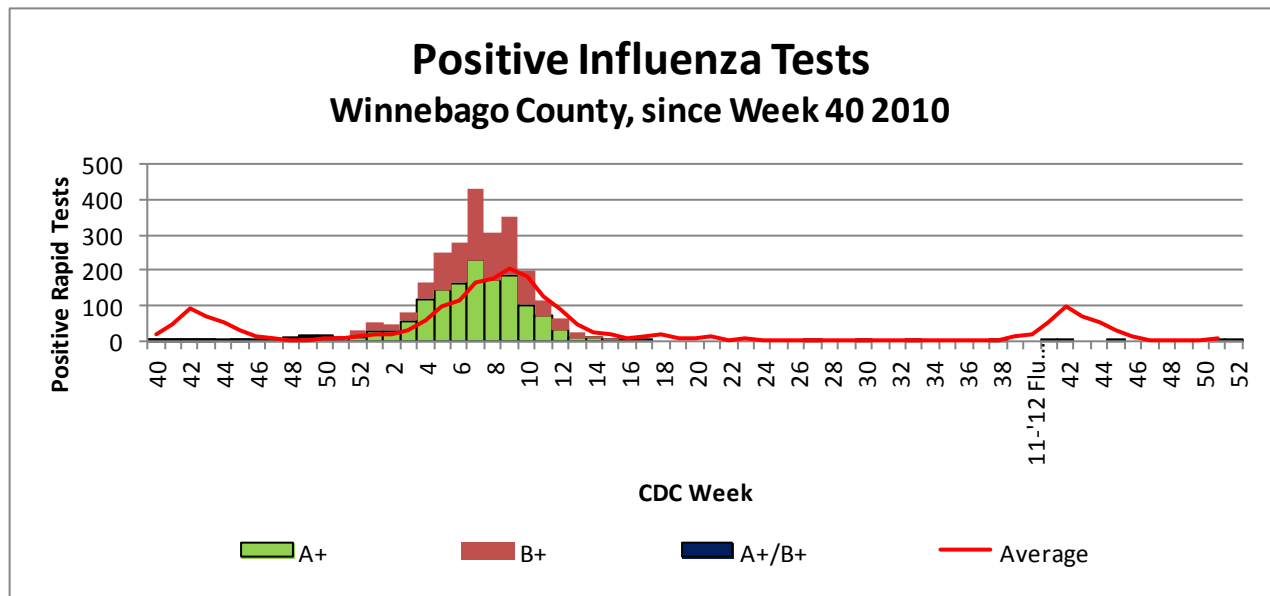
Sentinel Site ILI rate -Week 52 ending December 31st: **1.14%**  
**(only 2 sites reporting)**

#### **Pneumonia Hospital Admissions**

Week 52 Ending December 31st: **25**  
Previous Week 51 Ending December 24th: **26**  
Note: Numbers include 2 hospitals and are one week behind due to reporting methods.

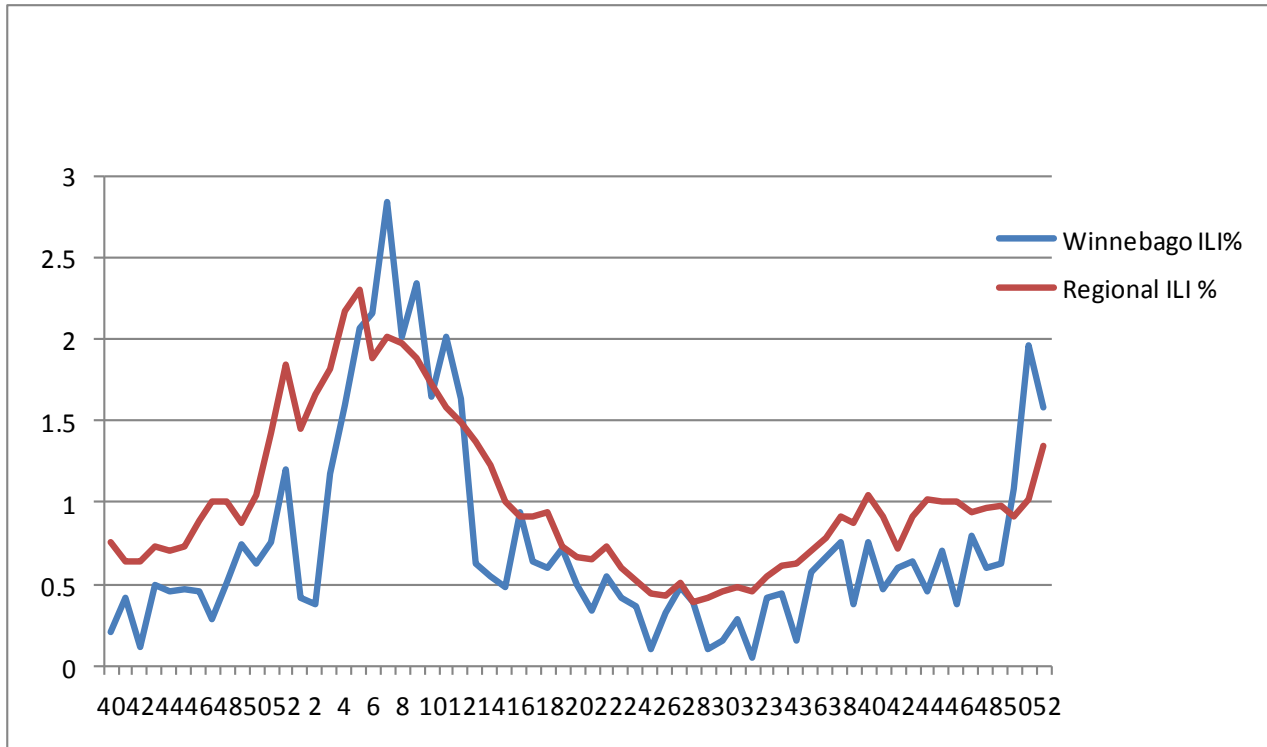
#### **School Attendance**

Week 52 Ending December 31st: **RP\$ 205 on Winter Break.**

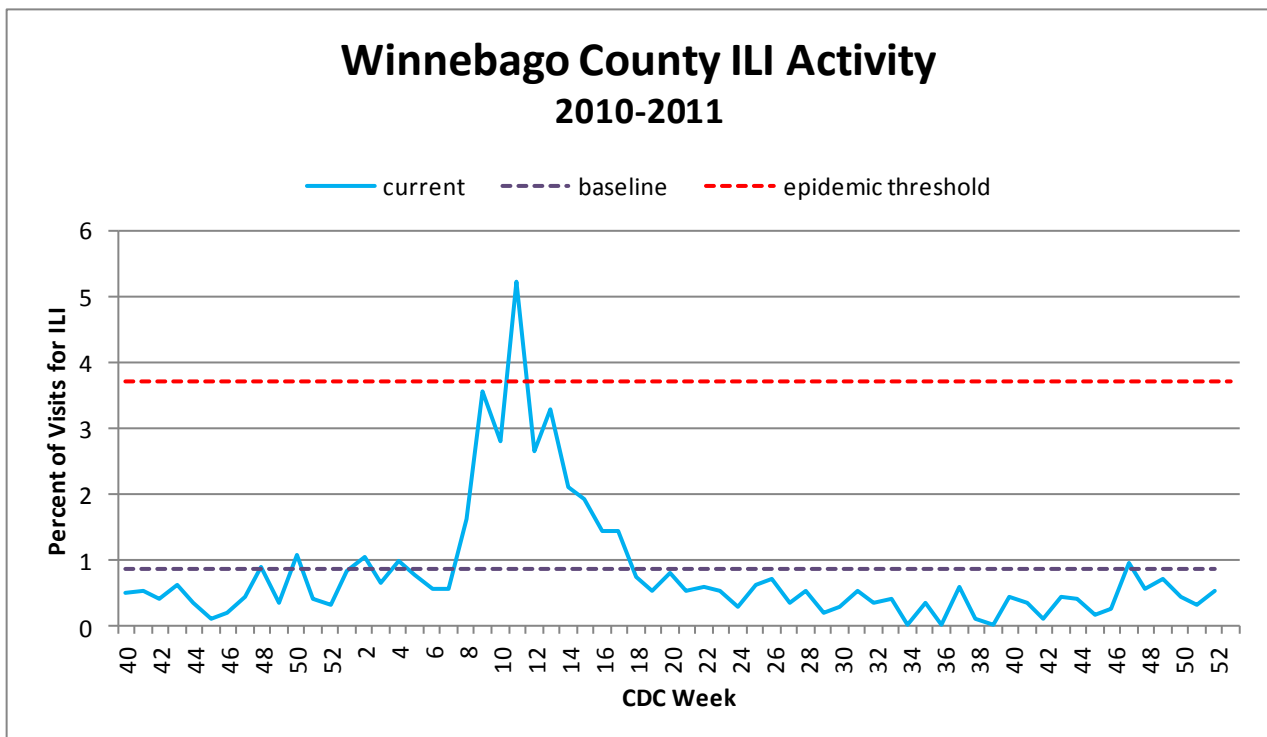


**Figure 1** displays the current number of rapid flu cases reported to our department and broken down by influenza sub-typing compared to a 4-year historical average (the red line). 10 total A positive rapid flu cases and 1 A/B positive have been reported for the 2011-12 flu season. Two cases of Influenza A and 1 case of Influenza A/B were reported for Week 52 which is below the historical average of 7.75 cases.

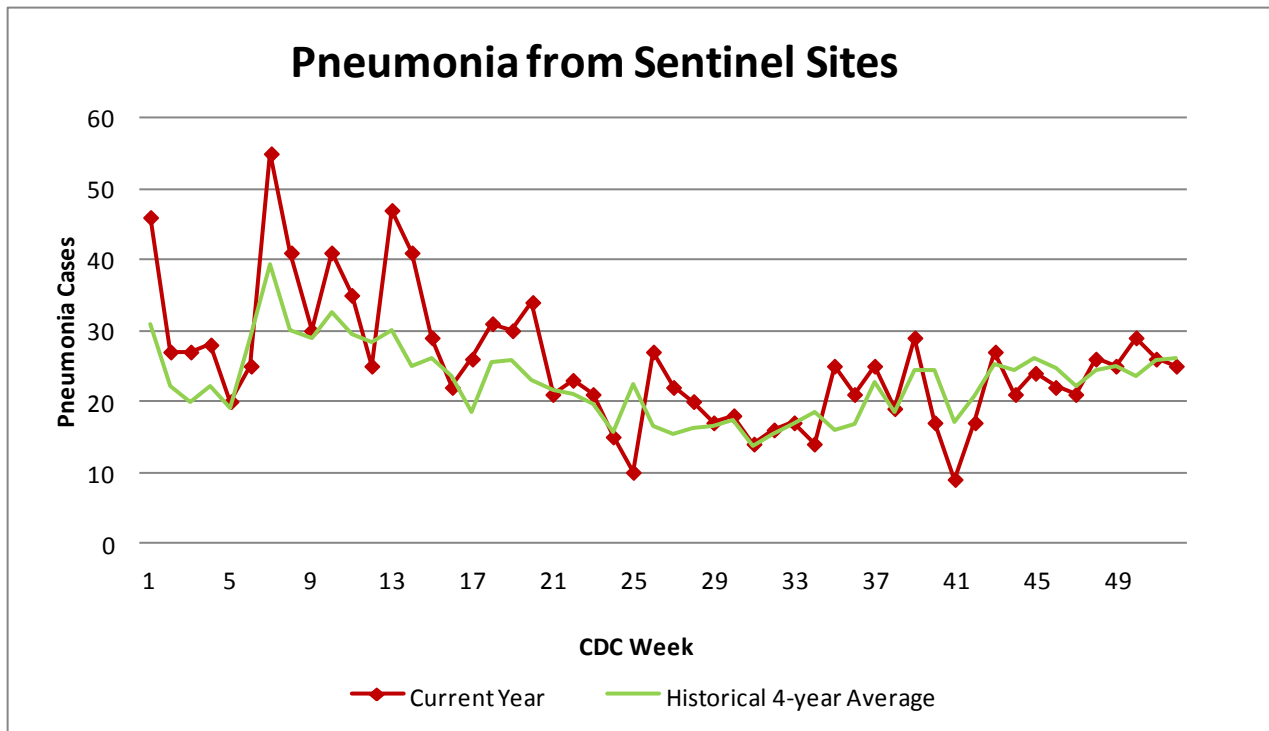
## Weekly Percentage of Visits as Identified by Essence



**Figure 2** displays the weekly percentage of Influenza-Like Illness (ILI) as identified by the Essence Syndromic Surveillance System. The blue line shows the percentage of ILI Emergency Department visits in Winnebago County from our two participating hospitals and the red line shows the regional ILI percentage for all counties participating in ESSENCE. For CDC Week 52, Winnebago County reported an ILI percent of **1.58 (only one hospital reporting)**, higher than the regional ILI percent of **1.35**.



**Figure 3** is the representation of all visits from our sentinel sites not participating in Essence for ILI. ILI activity among the three sites for CDC Week 52 was 1.14%. Only 2 sites reported ILI rates for this week.



**Figure 4** compares the current number of pneumonia hospital admissions (red line) against the 4-year historical average (the green line). For CDC Week 52, we are slightly below the 4-year historical average of 26 with 25 total hospital admittances reported. Note that all data are preliminary and numbers for weeks 50, 51, and 52 for 2011 are still arriving.

### Outside the County:

Illinois influenza activity (as of Week 52):

#### **Illinois reported Sporadic INFLUENZA ACTIVITY**

During week 52, the following influenza activity was reported:

- Regional influenza activity was reported by one state (Colorado).
- Local influenza activity was reported by four states (Massachusetts, New Hampshire, Texas, and Virginia).
- Sporadic influenza activity was reported by Guam, and 40 states (Alabama, Arizona, Arkansas, California, Connecticut, Florida, Georgia, Hawaii, Illinois, Indiana, Iowa, Kansas, Kentucky, Louisiana, Maine, Maryland, Michigan, Minnesota, Mississippi, Missouri, Montana, Nebraska, Nevada, New Mexico, New York, North Carolina, Ohio, Oklahoma, Oregon, Pennsylvania, Rhode Island, South Carolina, South Dakota, Tennessee, Utah, Vermont, Washington, West Virginia, Wisconsin, and Wyoming).
- No influenza activity was reported by the District of Columbia, the U.S. Virgin Islands, and five states (Alaska, Delaware, Idaho, New Jersey, and North Dakota).
- Puerto Rico did not report.



#### **Questions/Comments?**

Amanda Mehl, MPH  
Epidemiologist  
Health Promotion and Protection  
Winnebago County  
Health Department  
401 Division Street  
Rockford, IL 61104  
815-720-4215



**Public Health**  
Prevent. Promote. Protect.

ILI Activity Level (Influenza like Illnesses reported Week 52)

Illinois is **LOW** on the scale