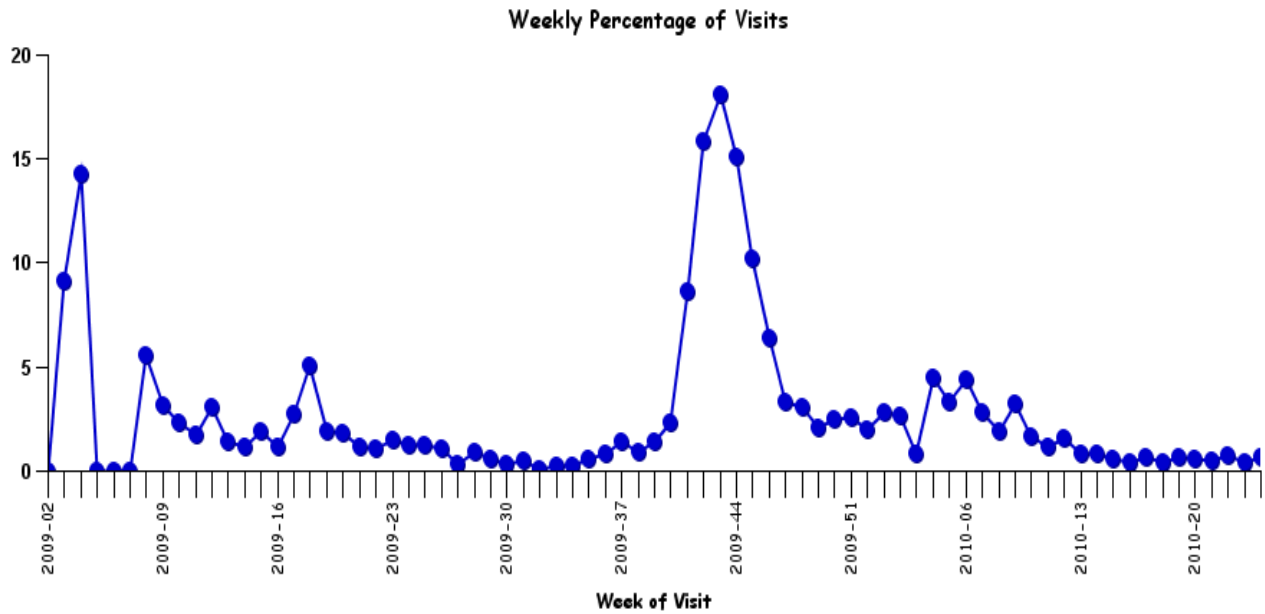


Influenza-Like Illness* Surveillance Report

Winnebago County

June 21, 2010

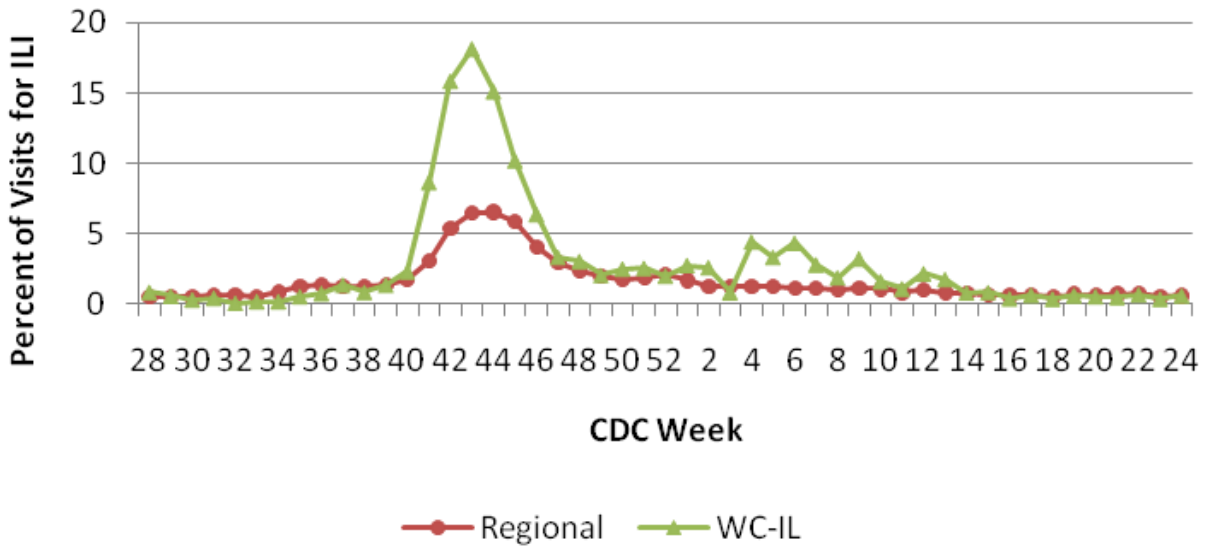
ILI Weekly percent for Winnebago County (Week 02, 2009–Week 24, 2010)



ILI Weekly percent for Winnebago County compared to regional data (Week 28, 2009–Week 24, 2010)

ESSENCE ILI Data

Winnebago Co. compared to Regional Data



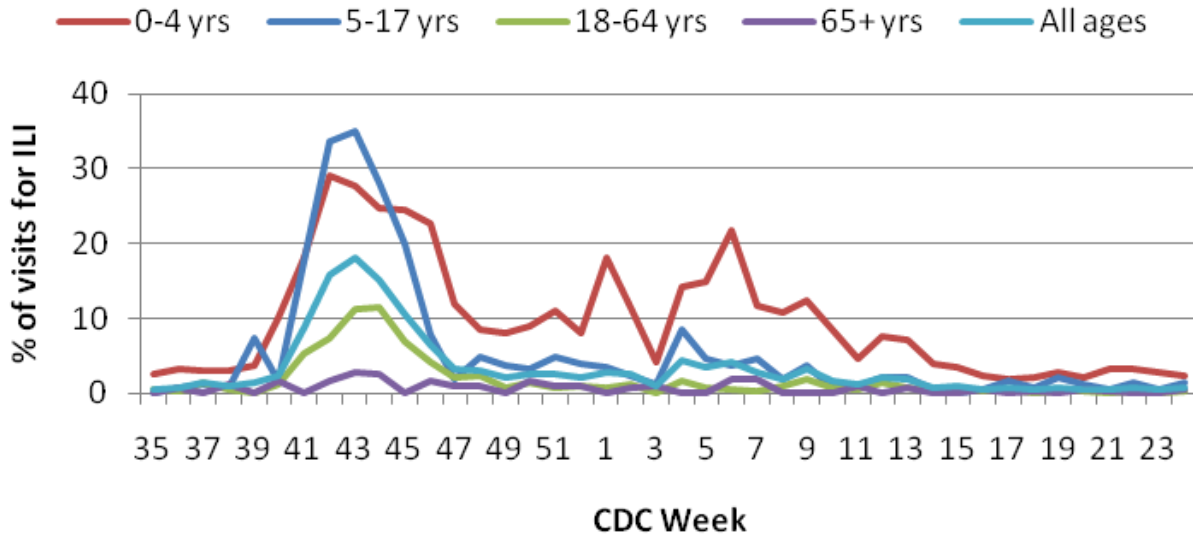
*All data captured via ESSENCE (Electronic Surveillance System for the Early Notification of Community-based Epidemics)



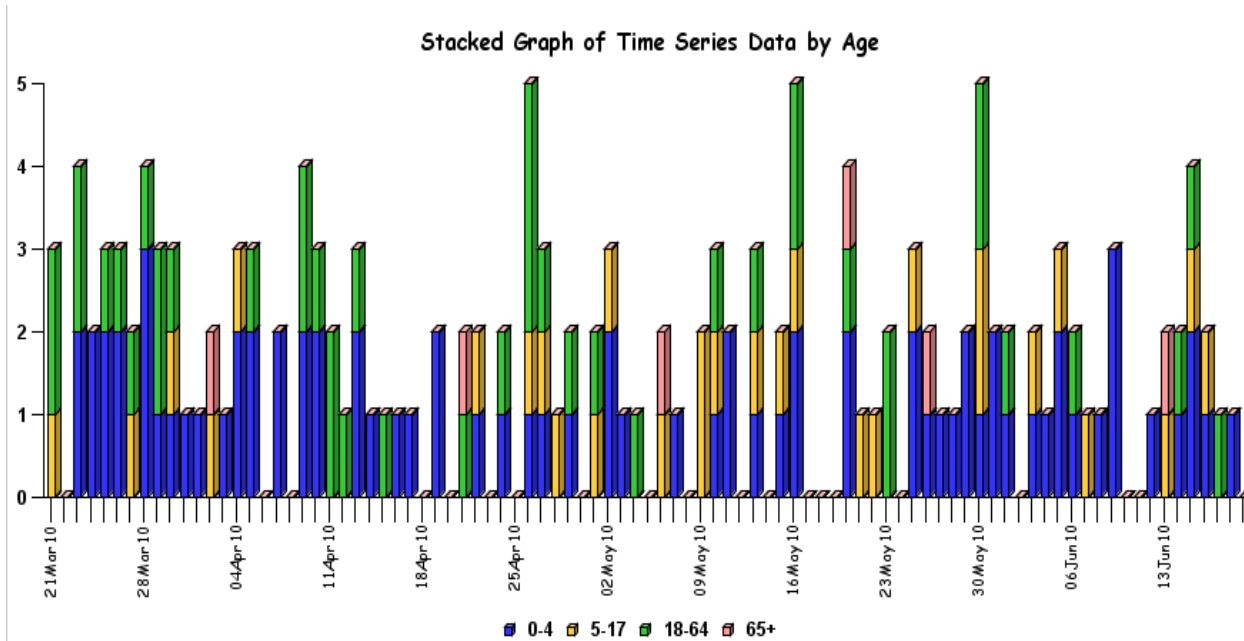
Influenza-Like Illness Surveillance Report
 Winnebago County
 June 21, 2010

ILI Weekly percent for Winnebago County by age (Week 35, 2009—Week 24, 2010)

Winnebago County ILI ESSENCE Data
 Age groups, Week 35, 2009 through Week 24, 2010



ILI Daily visits for Winnebago County by age (March 21, 2010—June 19, 2010)



Results:

Currently, Winnebago County is currently seeing around normal levels in sentinel-site Emergency Department (ED) visits for influenza-like illness (ILI). Winnebago County is slightly above regional data for ILI activity this week, despite a small local decrease. Currently 0.63% of all ED visits are for ILI. ILI ED visits are primarily from those aged 0-4 (2.41%) and 5-17 (1.44%).

