



**Winnebago County, Illinois**  
**Weekly Influenza Surveillance Report**  
**CDC Week 20**  
**May 16, 2010—May 22, 2010**

**In Brief:**

***Mortality***

Confirmed deaths from Pneumonia/Influenza Week 20: 1  
Percent of deaths due to Pneumonia/Influenza: 2.22%  
Baseline—5.38%, Epidemic—11.34%

***School Absenteeism***

Sentinel Site Absenteeism – All Schools – Week of 05/17 – 05/21: 10.92%  
Sentinel Site Absenteeism – All Schools – Week of 05/10 – 05/14: 9.39%  
Sentinel Site Absenteeism – Elementary Schools – Week of 05/17 – 05/21: 7.12%  
Sentinel Site Absenteeism – Elementary Schools – Week of 05/10 – 05/14: 7.68%

***Influenza-Like Illness Surveillance***

Sentinel Site ILI rate—Week Ending May 22: 0.53%  
Sentinel Site ILI rate—Week Ending May 15: 0.28%

***Pneumonia Hospital Admissions***

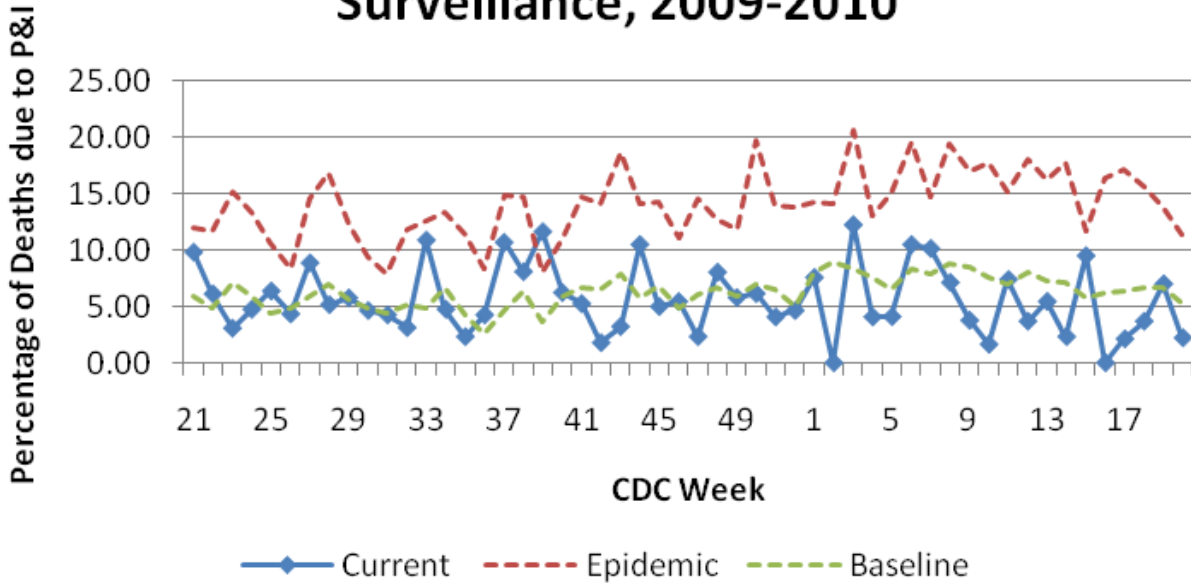
Week Ending May 22: 9  
Week Ending May 15: 21

Note: Numbers include 2 hospitals and are one week behind due to reporting methods.

***Laboratory Rapid Antigen Tests***

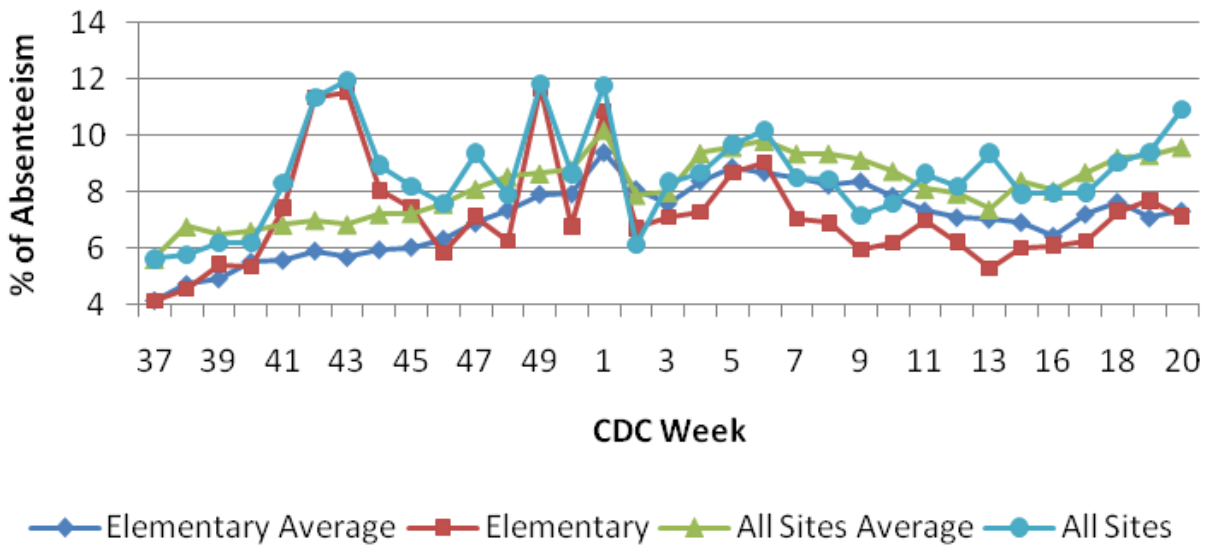
Winnebago County positive rapid tests collected (beginning Week 35): 1414  
Winnebago County positive rapid tests collected for Week 49 (ending December 12) : 5  
Winnebago County positive rapid tests collected for Week 50 (ending December 19) : 5  
Winnebago County positive rapid tests collected for Week 51 (ending December 26) : 1  
Winnebago County positive rapid tests collected for Week 52 (ending January 2) : 0  
Winnebago County positive rapid tests collected for Week 01 (ending January 9) : 2  
Winnebago County positive rapid tests collected for Week 02 (ending January 16) : 0  
Winnebago County positive rapid tests collected for Week 03 (ending January 23) : 1  
Winnebago County positive rapid tests collected for Week 04 (ending January 30) : 5  
Winnebago County positive rapid tests collected for Week 05 (ending February 06) : 2  
Winnebago County positive rapid tests collected for Week 06 (ending February 13) : 3  
Winnebago County positive rapid tests collected for Week 07 (ending February 20) : 3  
Winnebago County positive rapid tests collected for Week 08 (ending February 27) : 1  
Winnebago County positive rapid tests collected for Week 09 (ending March 06) : 3  
Winnebago County positive rapid tests collected for Week 10 (ending March 13) : 2  
Winnebago County positive rapid tests collected for Week 11 (ending March 20) : 14  
Winnebago County positive rapid tests collected for Week 12 (ending March 27) : 0  
Winnebago County positive rapid tests collected for Week 13 (ending April 03) : 0  
Winnebago County positive rapid tests collected for Week 14 (ending April 10) : 0  
Winnebago County positive rapid tests collected for Week 15 (ending April 17) : 0  
Winnebago County positive rapid tests collected for Week 16 (ending April 24) : 0  
Winnebago County positive rapid tests collected for Week 17 (ending May 01) : 0  
Winnebago County positive rapid tests collected for Week 18 (ending May 08) : 3  
Winnebago County positive rapid tests collected for Week 19 (ending May 15) : 1  
Winnebago County positive rapid tests collected for Week 20 (ending May 22) : 0

## Pneumonia and Influenza Mortality Surveillance, 2009-2010



*Figure 1* displays the current percentage of deaths attributable to pneumonia and influenza combined. This value is compared to a baseline and upper threshold (95%, or 1.96 standard deviations above the mean) figure, calculated using data from the previous 14 years. Week 20 is below the baseline and upper 95% threshold.

## Sentinel School Absenteeism Elementary and All Sites 2009-2010



*Figure 2* compares Elementary and All-Sites school absenteeism from sentinel sites against the average of the previous eight school years. For both Elementary absenteeism, the data are below historical averages, but for all-sites absenteeism, the data are above the historical averages. There was no school during Weeks 51 and 52 of 2009 and Week 14 of 2010.

## Total ILI by Sentinel Sites

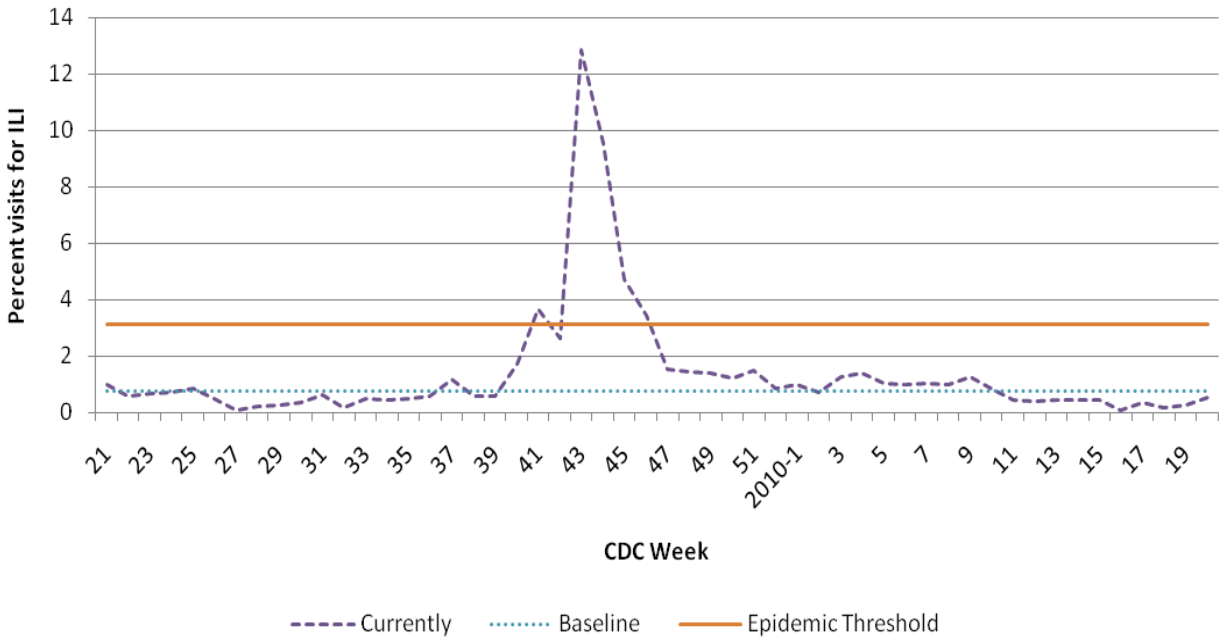


Figure 3 is the representation of all visits from sentinel sites\* for Influenza-Like Illness, or ILI. Also included are the baseline and upper threshold (95%, or 1.96 standard deviations above the mean) calculated from the previous 3 years. ILI activity has risen this week, and is currently below baseline values. \*Currently 3 sentinel sites reporting.

## Pneumonia from Sentinel Sites

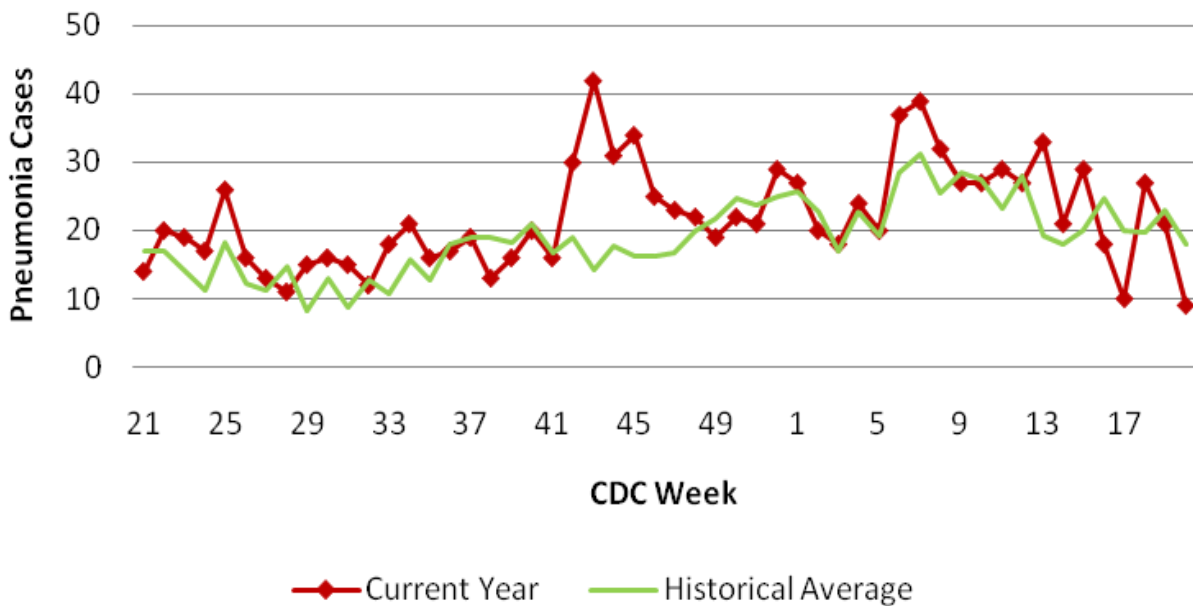


Figure 4 compares the number of pneumonia admissions against the average pneumonia from sentinel sites over the previous three years. Week 18 was above the historical average, but Weeks 19 and 20 are below. Please note, these numbers only include two hospitals, and one is one week behind due to reporting methods.

**Positive Rapid Influenza Tests (as of 05/22/2010)**  
 Total Number of A+/B+ Samples Collected by Week for All Facilities  
 Compared to a 4-Year Historical Average  
 (N = 1414, 98% A+, 2% B+)

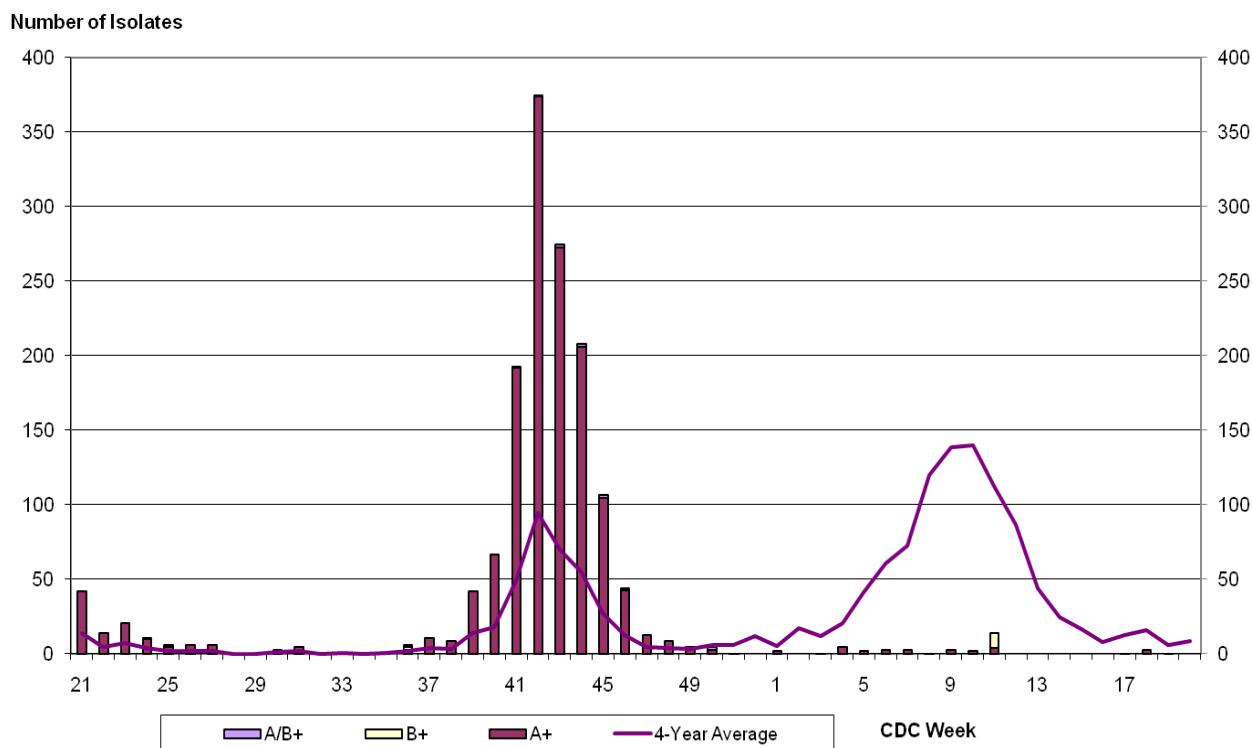


Figure 5 represents the number of positive rapid influenza (broken down by influenza sub-typing) compared to a 4-year historical average. Previously, data were above the historical average, but Weeks 50 of 2009 through 20 of 2010 are below.

## Total H1N1 Hospitalizations

Onset of Symptoms, Winnebago County since Week 35

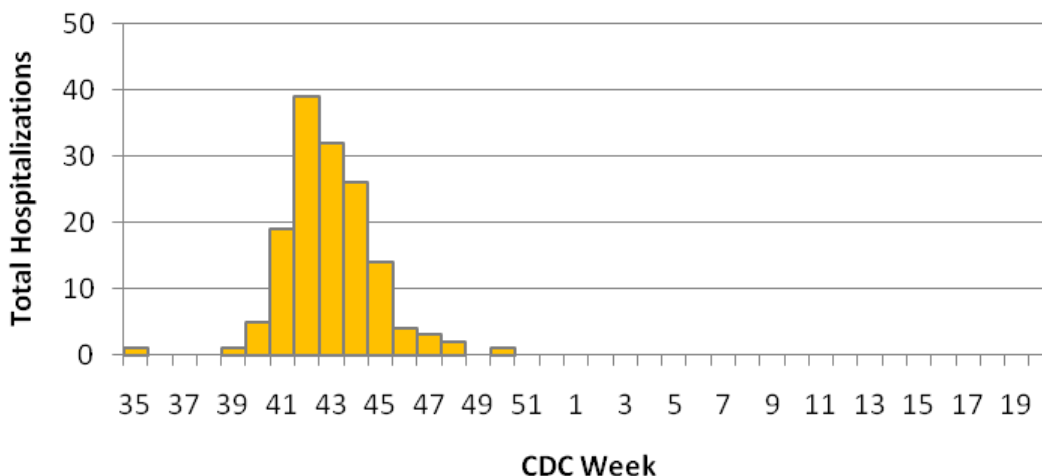


Figure 6, above, shows the number of H1N1 hospitalizations by onset of symptoms and week for Winnebago County. Please note the large spike in cases beginning in week 41. Also, there were no new hospitalized cases with onset of symptoms in Weeks 49, 51, and 52 of 2009 in addition to Weeks 1 through 20 of 2010.

# H1N1 Cases by Age and Week

Winnebago County, IL

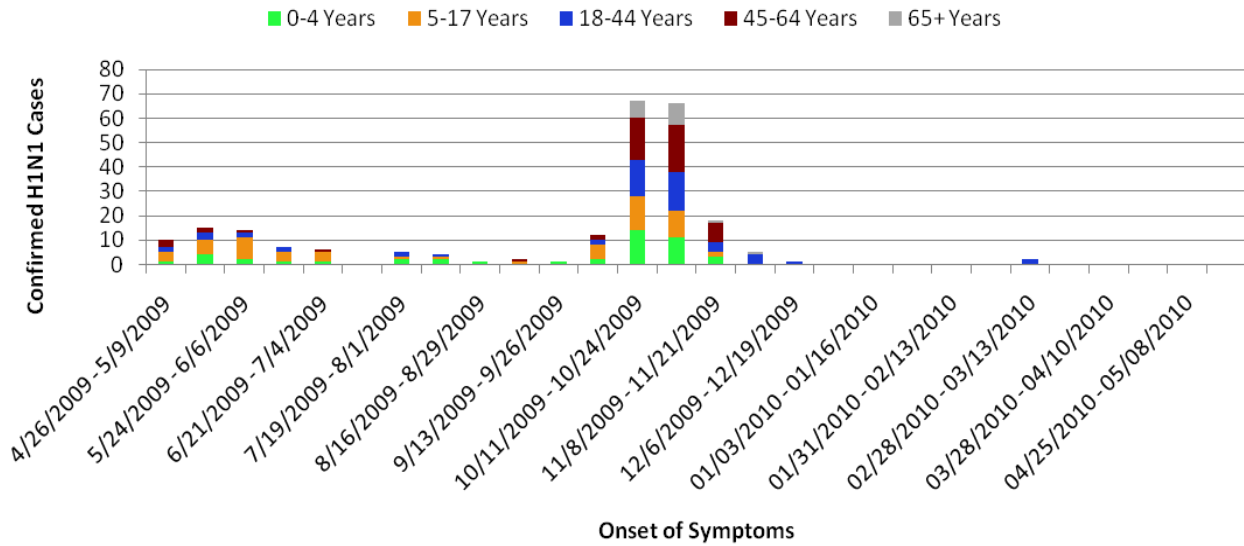


Figure 7 is representative of all H1N1 cases by age and bi-week periods. There had been a large increase in case numbers in previous two, two-week periods, but there has been a decline lately. Also, the majority of cases were in those under 18 years old, but more recent cases have been documented in those over the age of 18. There were no new cases week ending 05/22/2010.

Age Range	Total Cases n / %	Percent of Hospitalizations n / %
0 - 4	45 / 19%	27 / 17%
5 - 17	62 / 26%	27 / 17%
18 - 44	56 / 24%	39 / 24%
45 - 64	55 / 23%	50 / 31%
65 +	18 / 8%	18 / 11%
Total	236 / 100%	161 / 100%

*Below, Novel H1N1 influenza by Gender*

Gender	N	%
Male	106	45%
Female	130	55%

*Above, Novel H1N1 cases by age and hospitalizations by age*

Age Range	1 mo - 85 yrs
Mean	27.69 yrs
Median	21 yrs

*Left, age range, mean and median for Novel H1N1 influenza*

*Below, various statistics for Novel H1N1 Confirmed cases, as of May 22, 2010*

Comorbidity/ Risk Factors	Unhospitalized Cases (%) (n = 51)	Hospitalized (%) (n = 158)	All (%) (n=209)
Asthma	(7) 13.7	(54) 34.1	29.2
Diabetes	(1) 1.9	(26) 16.4	12.9
Pregnancy	(1) 1.9	(4) 2.5	2.4
Immunocompromised	-	(13) 8.2	6.2
None Disclosed	(42) 82.4	(70) 44.3	53.6
<b>Seasonal Influenza Vaccination</b>			
Received	(4) 7.8	(3) 1.9	3.3
Did Not Receive	(15) 29.4	(13) 8.2	13.4
Unknown	(32) 62.7	(142) 89.9	82.3

## Novel H1N1 Laboratory Submissions

Week	Winnebago County			Out of Jurisdiction		
	Submitted	Positive	Percent Positive	Submitted	Positive	Percent Positive
Ending 02/06	33	0	0%	4	0	0%
Ending 02/13	40	0	0%	9	0	0%
Ending 02/20	28	0	0%	5	0	0%
Ending 02/27	20	0	0%	8	1	0%
Ending 03/06	24	2	8%	6	0	0%
Ending 03/13	21	0	0%	2	0	0%
Ending 03/20	20	0	0%	2	0	0%
Ending 03/27	18	0	0%	7	0	0%
Ending 04/03	18	0	0%	3	0	0%
Ending 04/10	9	0	0%	3	0	0%
Ending 04/17	11	0	0%	0	0	0%
Ending 04/24	13	0	0%	2	0	0%
Ending 05/01	6	0	0%	1	0	0%
Ending 05/08	10	0	0%	6	0	0%
Ending 05/15	11	0	0%	2	0	0%
Ending 05/22	5	0	0%	2	0	0%
<b>Total</b>	<b>1536</b>	<b>236</b>	<b>15%</b>	<b>355</b>	<b>11</b>	<b>3%</b>

Figure 7 shows the number of Novel H1N1 submissions from both residents and non-residents of the County. Overall 1891 Novel H1N1 tests have been submitted, 247 (13%) being positive. In addition, Winnebago County has experienced 5 deaths from the Novel H1N1 Influenza.

### Outside the County:

Illinois influenza activity (as of week 20):  
Sporadic

Illinois number of Novel H1N1 influenza hospitalizations:  
3,045

Illinois number of Novel H1N1 influenza deaths:  
111

Source: Illinois Department of Public Health

United States influenza activity (as of Week 20):  
Local in 1 State/Territory  
Sporadic in 15 States/Territories  
No Activity in 35 States/Territories

U.S. number of Novel H1N1 influenza cases for Week 20:  
2

U.S. cumulative number of Novel H1N1 influenza cases:  
66,873 Week 35 through Week 20

Source: Centers for Disease Control and Prevention



#### Questions/Comments?

Zachary McCormic, MPH  
Epidemiologist  
Health Promotion and Protection  
Winnebago County  
Health Department  
401 Division Street  
Rockford, IL 61107  
815-720-4215



**Public Health**  
Prevent. Promote. Protect.