



Winnebago County, Illinois
Weekly Influenza Surveillance Report
CDC Week 3
January 17, 2010—January 23, 2010

In Brief:

Mortality

Confirmed deaths from pneumonia/influenza Week 03: 7
Percent of deaths due to pneumonia/influenza: 12.28%
Baseline—8.36%, Epidemic—20.78%

School Absenteeism

Sentinel Site Absenteeism – All Schools – Week of 01/18 – 01/22: 8.33%
Sentinel Site Absenteeism – All Schools – Week of 01/11 – 01/15: 6.11%
Sentinel Site Absenteeism – Elementary Schools – Week of 01/18 – 01/22: 7.08%
Sentinel Site Absenteeism – Elementary Schools – Week of 01/11 – 01/15: 6.71%

Influenza-Like Illness Surveillance

Sentinel Site ILI rate—Week Ending January 23: 1.24%
Sentinel Site ILI rate—Week Ending January 16: 0.99%

Pneumonia Hospital Admissions

Week Ending January 23: 12
Week Ending January 16: 19

Note: Numbers include 2 hospitals and are one week behind due to reporting methods.

Laboratory Rapid Antigen Tests

Winnebago County positive rapid tests collected (beginning Week 35): 1376
Winnebago County positive rapid tests collected for Week 35 (ending September 5): 1
Winnebago County positive rapid tests collected for Week 36 (ending September 12): 6
Winnebago County positive rapid tests collected for Week 37 (ending September 19): 11
Winnebago County positive rapid tests collected for Week 38 (ending September 26): 9
Winnebago County positive rapid tests collected for Week 39 (ending October 3): 39
Winnebago County positive rapid tests collected for Week 40 (ending October 10): 65
Winnebago County positive rapid tests collected for Week 41 (ending October 17): 190
Winnebago County positive rapid tests collected for Week 42 (ending October 24): 354
Winnebago County positive rapid tests collected for Week 43 (ending October 31): 272
Winnebago County positive rapid tests collected for Week 44 (ending November 7): 199
Winnebago County positive rapid tests collected for Week 45 (ending November 14): 107
Winnebago County positive rapid tests collected for Week 46 (ending November 21): 40
Winnebago County positive rapid tests collected for Week 47 (ending November 28): 13
Winnebago County positive rapid tests collected for Week 48 (ending December 5): 9
Winnebago County positive rapid tests collected for Week 49 (ending December 12): 5
Winnebago County positive rapid tests collected for Week 50 (ending December 19): 5
Winnebago County positive rapid tests collected for Week 51 (ending December 26): 1
Winnebago County positive rapid tests collected for Week 52 (ending January 2): 0
Winnebago County positive rapid tests collected for Week 01 (ending January 9): 2
Winnebago County positive rapid tests collected for Week 02 (ending January 16): 0
Winnebago County positive rapid tests collected for Week 03 (ending January 23): 1

Pneumonia and Influenza Mortality Surveillance, 2009-2010

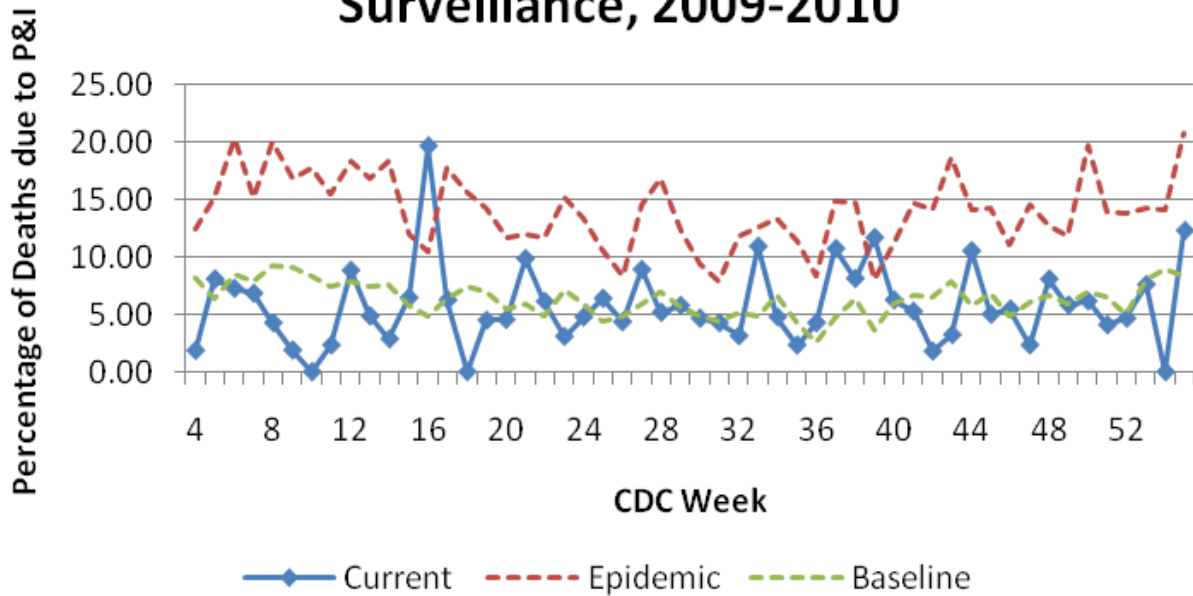


Figure 1 displays the current percentage of deaths attributable to pneumonia and influenza combined. This value is compared to a baseline and upper threshold (95%, or 1.96 standard deviations above the mean) figure, calculated using data from the previous 14 years. Week 3 is between the baseline and upper 95% threshold.

Sentinel School Absenteeism Elementary and All Sites 2009-10

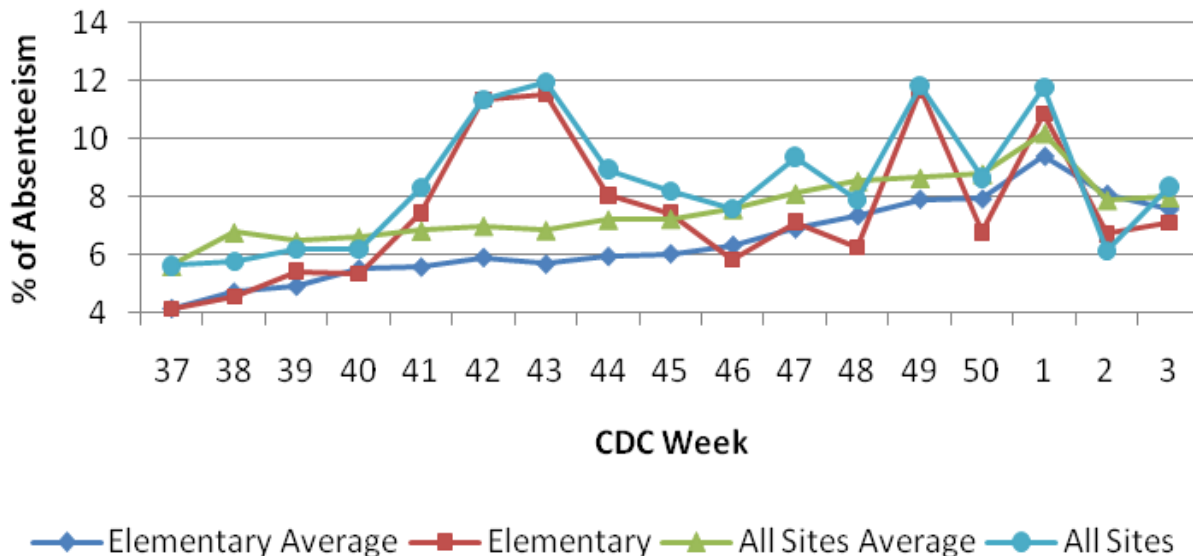


Figure 2 compares Elementary and All-Sites school absenteeism from sentinel sites against the average of the previous eight school years. For both Elementary and All-Sites absenteeism, the data has risen to above historical averages for All-Sites absenteeism, but is still below for Elementary School absenteeism. There was no school during Weeks 51 and 52.

Total ILI by Sentinel Sites

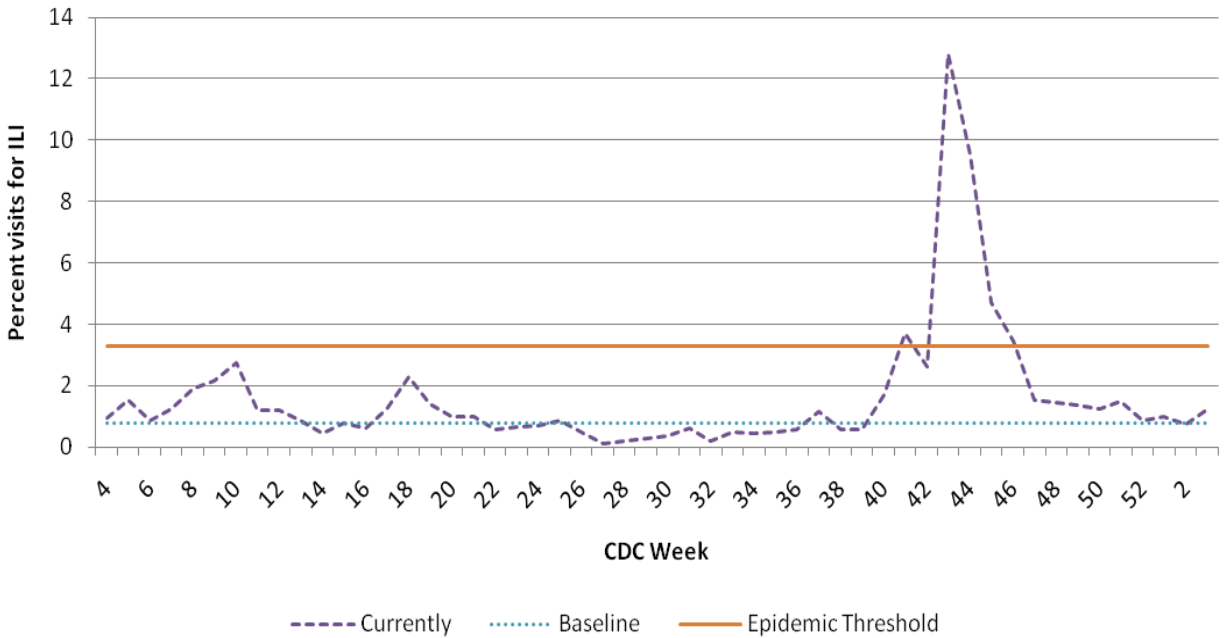


Figure 3 is the representation of all visits from sentinel sites* for Influenza-Like Illness, or ILI. Also included are the baseline and upper threshold (95%, or 1.96 standard deviations above the mean) calculated from the previous 3 years. This week's ILI activity continues to decline from 12 weeks ago and is currently below epidemic values. *Currently 2 sentinel sites reporting.

Pneumonia from Sentinel Sites

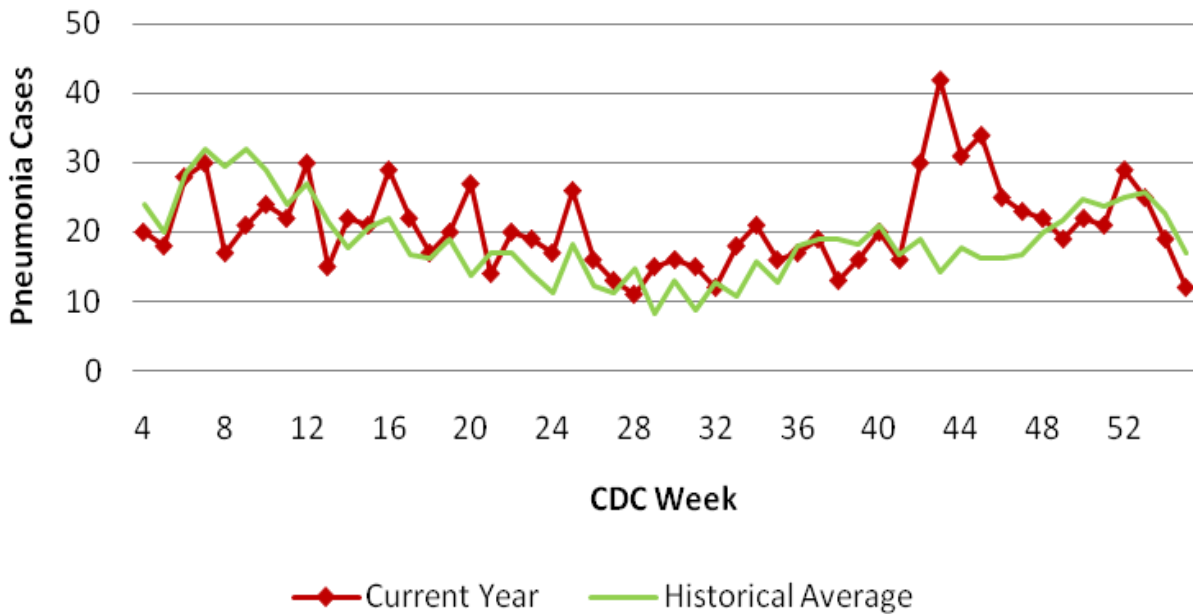


Figure 4 compares the number of pneumonia admissions against the average pneumonia from sentinel sites over the previous three years. Week 52 of 2009 was above the historical average, but Weeks 1 through 3 of 2010 are below. Please note, these numbers only include two hospitals, and one is one week behind in reporting methods.

Positive Rapid Influenza Tests (as of 01/23/2010)
 Total Number of A+/B+ Samples Collected by Week for All Facilities
 Compared to a Historical 3 Year Average
 (N = 1376, 99% A+, 1% B+)

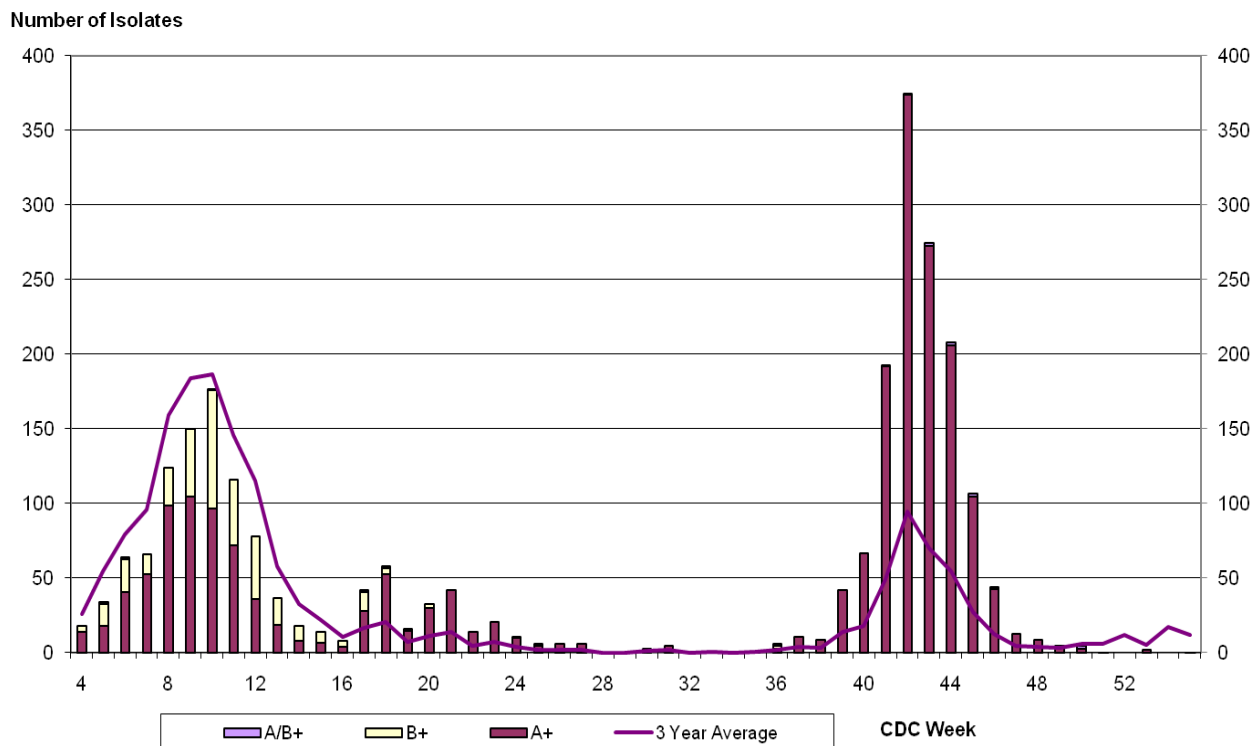


Figure 5 represents the number of positive rapid influenza (broken down by influenza sub-typing) compared to a 3-year historical average. The previous fifteen weeks were above the historical average, but Week 50 of 2009 through Week 3 of 2010 are below.

Total H1N1 Hospitalizations

Onset of Symptoms, Winnebago County since Week 35

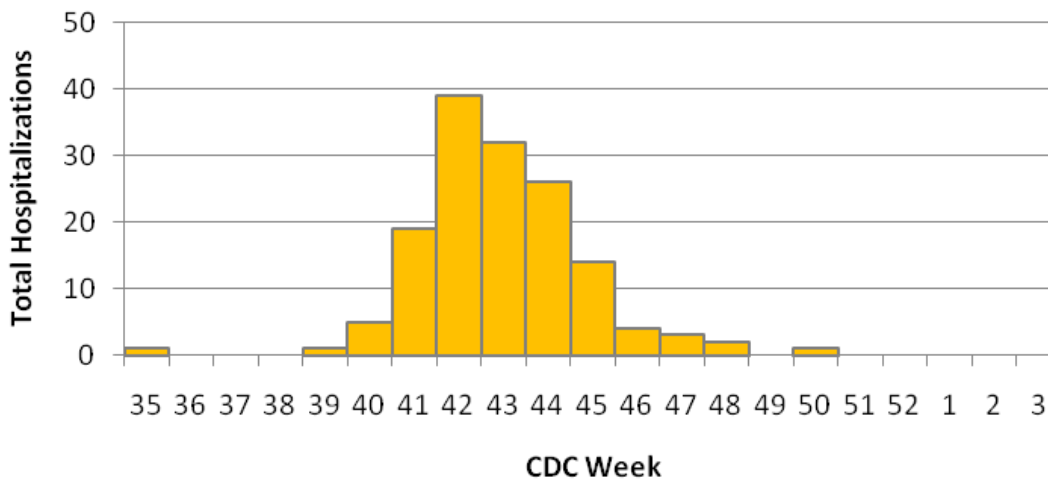


Figure 6, above, shows the number of H1N1 hospitalizations by onset of symptoms and week for Winnebago County. Please note the large spike in cases beginning in week 41. Also, there were no new confirmed cases with onset of symptoms in Weeks 49, 51, and 52 of 2009 in addition to Weeks 1 through 3 of 2010.

H1N1 Cases by Age and Week

Winnebago County, IL

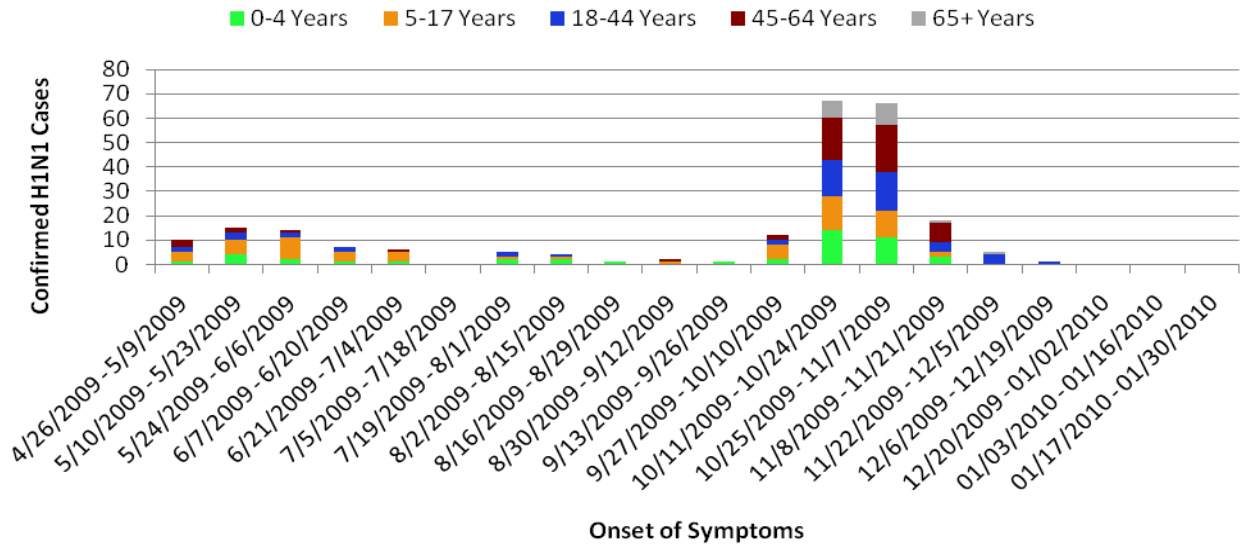


Figure 7 is representative of all H1N1 cases by age and bi-week periods. There had been a large increase in case numbers in previous two, two-week periods, but there has been a decline lately. Also, the majority of cases were in those under 18 years old, but more recent cases have been documented in those over the age of 18. There were no new cases week ending 01/23/2010.

Age Range	Total Cases n / %	Percent of Hospitalizations n / %
0 - 4	45 / 19%	27 / 17%
5 - 17	62 / 26%	27 / 17%
18 - 44	54 / 23%	39 / 24%
45 - 64	55 / 24%	50 / 31%
65 +	18 / 8%	18 / 11%
Total	234 / 100%	161 / 100%

Below, Novel H1N1 influenza by Gender

Gender	N	%
Male	105	45%
Female	129	55%

Above, Novel H1N1 cases by age and hospitalizations by age

Age Range	1 mo - 85 yrs
Mean	27.67 yrs
Median	20.5 yrs

Left, age range, mean and median for Novel H1N1 influenza

Below, various statistics for Novel H1N1 Confirmed cases, as of January 23, 2010

	Unhospitalized Cases (%) (n = 49)	Hospitalized (%) (n = 158)	All (%) (n=207)
Comorbidity/ Risk Factors			
Asthma	(7) 14.3	(54) 34.1	29.5
Diabetes	(1) 2.1	(26) 16.4	13.0
Pregnancy	(1) 2.1	(4) 2.5	2.4
Immunocompromised	-	(13) 8.2	6.3
None Disclosed	(40) 81.5	(70) 44.3	53.1
Seasonal Influenza Vaccination			
Received	(4) 8.3	(3) 1.9	3.4
Did Not Receive	(15) 31.3	(13) 8.2	13.5
Unknown	(30) 60.4	(142) 89.9	83.1

Novel H1N1 Laboratory Submissions

Week	Winnebago County			Out of Jurisdiction		
	Submitted	Positive	Percent Positive	Submitted	Positive	Percent Positive
Ending 10/10	33	5	15%	9	1	11%
Ending 10/17	45	19	40%	12	0	0%
Ending 10/24	82	35	43%	20	1	5%
Ending 10/31	92	38	41%	24	0	0%
Ending 11/07	91	31	34%	19	2	10%
Ending 11/14	77	21	27%	17	0	0%
Ending 11/21	50	7	14%	17	0	0%
Ending 11/28	37	3	5%	7	0	0%
Ending 12/05	32	3	6%	12	0	0%
Ending 12/12	34	0	0%	8	0	0%
Ending 12/19	36	1	3%	6	0	0%
Ending 12/26	34	0	0%	10	0	0%
Ending 01/02	36	0	0%	5	0	0%
Ending 01/09	29	0	0%	8	0	0%
Ending 01/16	31	0	0%	4	0	0%
Ending 01/30	13	0	0%	3	0	0%
Total	1199	219	18%	284	15	5%

Figure 7 shows the number of Novel H1N1 submissions from both residents and non-residents of the County. Overall 1483 Novel H1N1 tests have been submitted, 234 (16%) being positive. In addition, Winnebago County has experienced 5 deaths from the Novel H1N1 Influenza.

Outside the County:

Illinois influenza activity (as of week 3):
Sporadic

Illinois number of Novel H1N1 influenza hospitalizations:
2,984

Illinois number of Novel H1N1 influenza deaths:
91

Source: Illinois Department of Public Health

United States influenza activity (as of Week 3):
Regional in 5 States/Territories
Local in 10 States/Territories
Sporadic in 35 States/Territories

U.S. number of Novel H1N1 influenza cases for Week 3:
98

U.S. cumulative number of Novel H1N1 influenza cases:
62,197 Week 35 through Week 3

Source: Centers for Disease Control and Prevention



Questions/Comments?

Zachary McCormic, MPH
Epidemiologist
Health Promotion and Protection
Winnebago County
Health Department
401 Division Street
Rockford, IL 61107
815-720-4215



Public Health
Prevent. Promote. Protect.