



**Winnebago County, Illinois**  
**Weekly Influenza Surveillance Report**  
**CDC Week 7**  
**February 14, 2010—February 20, 2010**

**In Brief:**

***Mortality***

Confirmed deaths from pneumonia/influenza Week 07: 6  
Percent of deaths due to pneumonia/influenza: 10.16%  
Baseline—7.86%, Epidemic—14.78%

***School Absenteeism***

Sentinel Site Absenteeism – All Schools – Week of 02/15 – 02/19: 8.48%  
Sentinel Site Absenteeism – All Schools – Week of 02/08 – 02/12: 9.67%  
Sentinel Site Absenteeism – Elementary Schools – Week of 02/15 – 02/19: 7.03%  
Sentinel Site Absenteeism – Elementary Schools – Week of 02/08 – 02/12: 8.67%

***Influenza-Like Illness Surveillance***

Sentinel Site ILI rate—Week Ending February 20: 1.01%  
Sentinel Site ILI rate—Week Ending February 13: 1.00%

***Pneumonia Hospital Admissions***

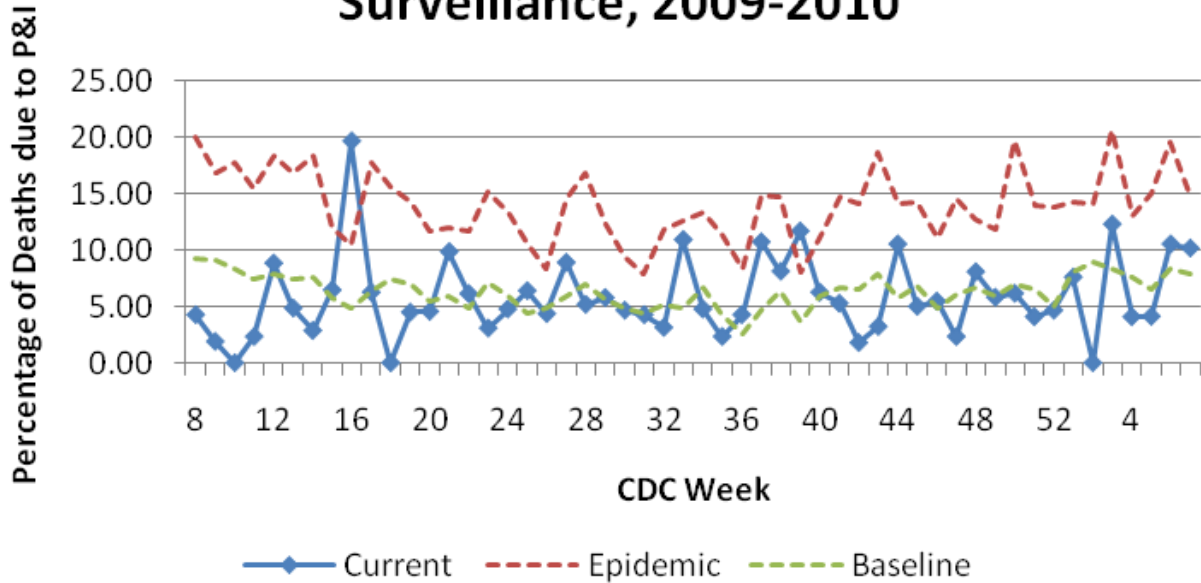
Week Ending February 20: 34  
Week Ending February 15: 35

Note: Numbers include 2 hospitals and are one week behind due to reporting methods.

***Laboratory Rapid Antigen Tests***

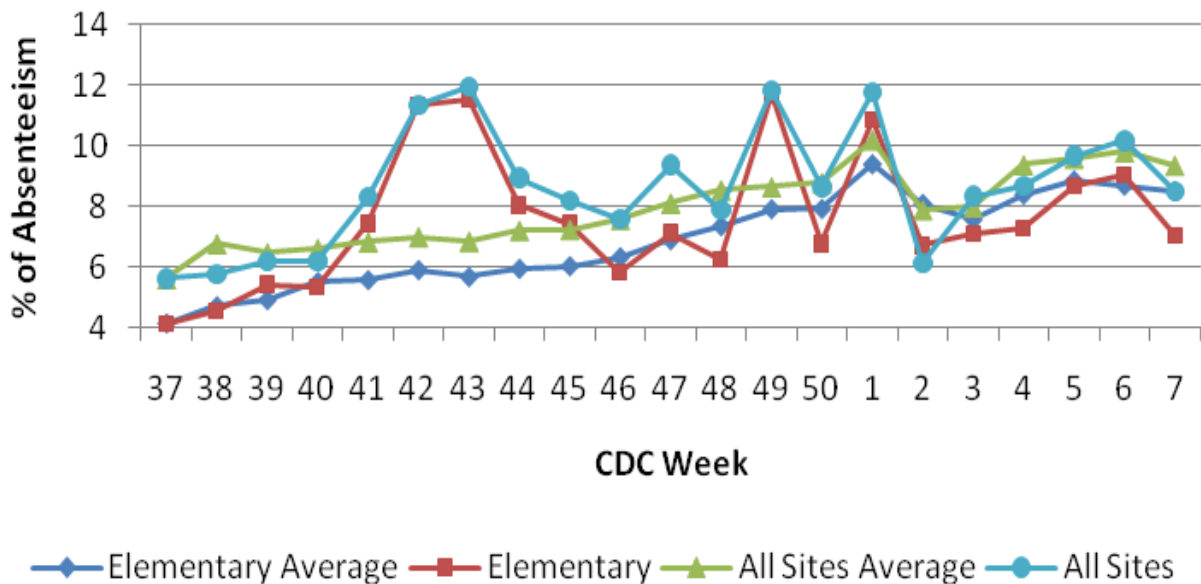
Winnebago County positive rapid tests collected (beginning Week 35): 1389  
Winnebago County positive rapid tests collected for Week 36 (ending September 12): 6  
Winnebago County positive rapid tests collected for Week 37 (ending September 19): 11  
Winnebago County positive rapid tests collected for Week 38 (ending September 26): 9  
Winnebago County positive rapid tests collected for Week 39 (ending October 3): 39  
Winnebago County positive rapid tests collected for Week 40 (ending October 10): 65  
Winnebago County positive rapid tests collected for Week 41 (ending October 17): 190  
Winnebago County positive rapid tests collected for Week 42 (ending October 24): 354  
Winnebago County positive rapid tests collected for Week 43 (ending October 31): 272  
Winnebago County positive rapid tests collected for Week 44 (ending November 7): 199  
Winnebago County positive rapid tests collected for Week 45 (ending November 14): 107  
Winnebago County positive rapid tests collected for Week 46 (ending November 21): 40  
Winnebago County positive rapid tests collected for Week 47 (ending November 28): 13  
Winnebago County positive rapid tests collected for Week 48 (ending December 5): 9  
Winnebago County positive rapid tests collected for Week 49 (ending December 12): 5  
Winnebago County positive rapid tests collected for Week 50 (ending December 19): 5  
Winnebago County positive rapid tests collected for Week 51 (ending December 26): 1  
Winnebago County positive rapid tests collected for Week 52 (ending January 2): 0  
Winnebago County positive rapid tests collected for Week 01 (ending January 9): 2  
Winnebago County positive rapid tests collected for Week 02 (ending January 16): 0  
Winnebago County positive rapid tests collected for Week 03 (ending January 23): 1  
Winnebago County positive rapid tests collected for Week 04 (ending January 30): 5  
Winnebago County positive rapid tests collected for Week 05 (ending February 06): 2  
Winnebago County positive rapid tests collected for Week 06 (ending February 13): 3  
Winnebago County positive rapid tests collected for Week 07 (ending February 20): 3

## Pneumonia and Influenza Mortality Surveillance, 2009-2010



*Figure 1* displays the current percentage of deaths attributable to pneumonia and influenza combined. This value is compared to a baseline and upper threshold (95%, or 1.96 standard deviations above the mean) figure, calculated using data from the previous 14 years. Week 7 is between the baseline and upper 95% threshold.

## Sentinel School Absenteeism Elementary and All Sites 2009-10



*Figure 2* compares Elementary and All-Sites school absenteeism from sentinel sites against the average of the previous eight school years. For both Elementary and All-Sites absenteeism, the data is below the historical averages. There was no school during Weeks 51 and 52.

## Total ILI by Sentinel Sites

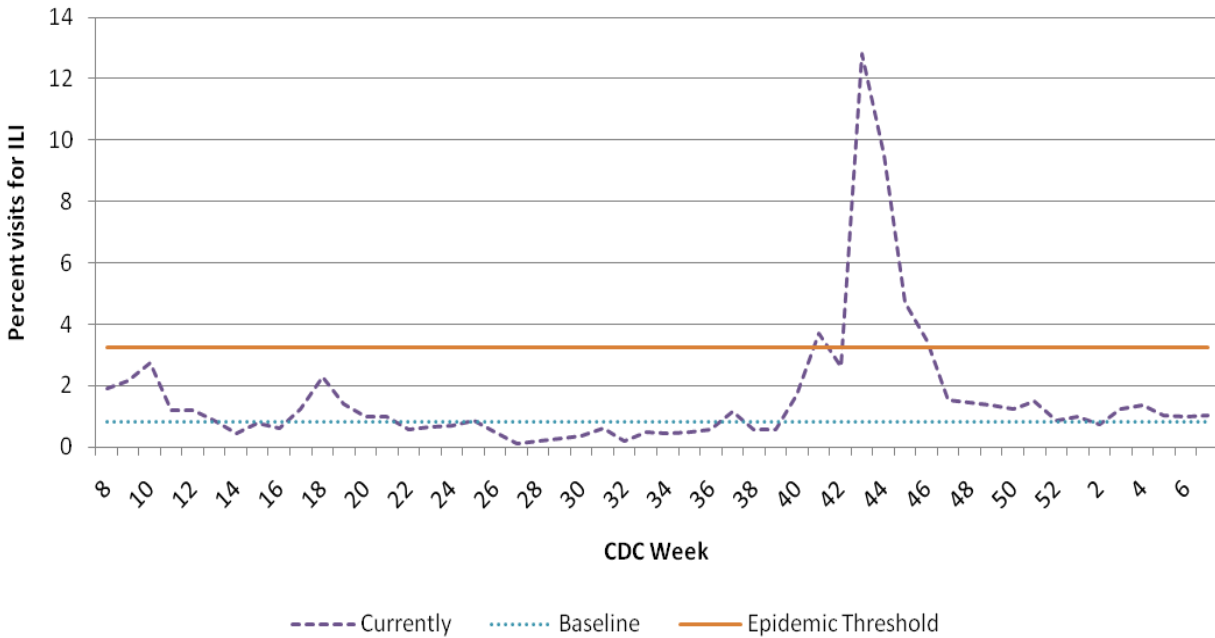


Figure 3 is the representation of all visits from sentinel sites\* for Influenza-Like Illness, or ILI. Also included are the baseline and upper threshold (95%, or 1.96 standard deviations above the mean) calculated from the previous 3 years. This week's ILI activity continues to decline from 16 weeks ago and is currently below epidemic values. \*Currently 2 sentinel sites reporting.

## Pneumonia from Sentinel Sites

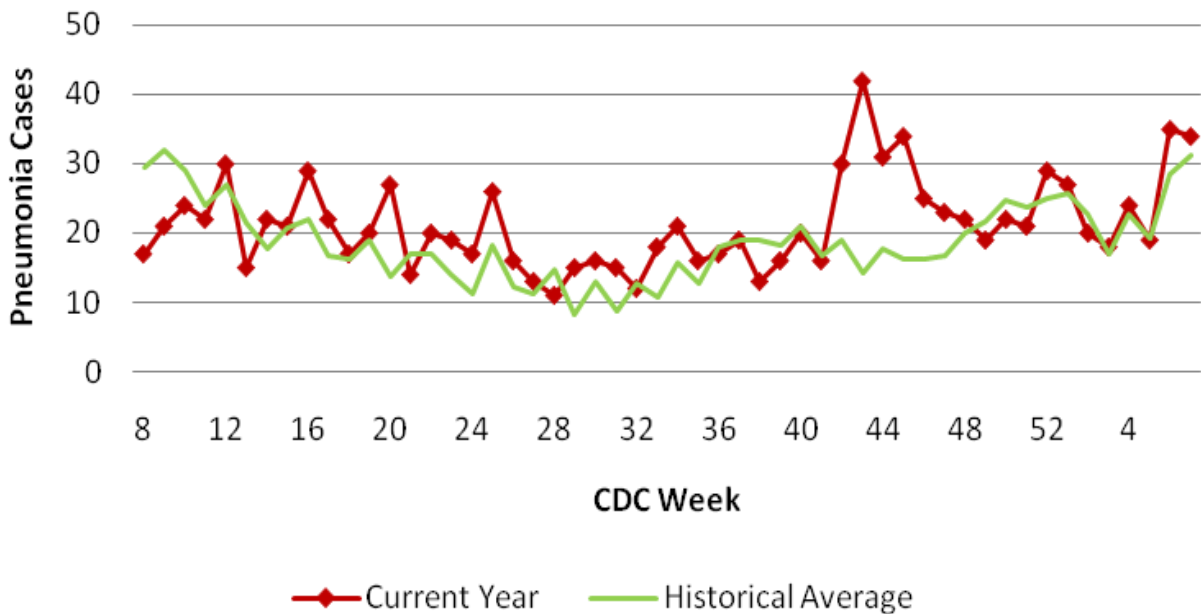


Figure 4 compares the number of pneumonia admissions against the average pneumonia from sentinel sites over the previous three years. Weeks 6 and 7 were above the historical average. Please note, these numbers only include two hospitals, and one is one week behind in reporting methods.

**Positive Rapid Influenza Tests (as of 02/20/2010)**  
 Total Number of A+/B+ Samples Collected by Week for All Facilities  
 Compared to a Historical 3 Year Average  
 (N = 1389, 99% A+, 1% B+)

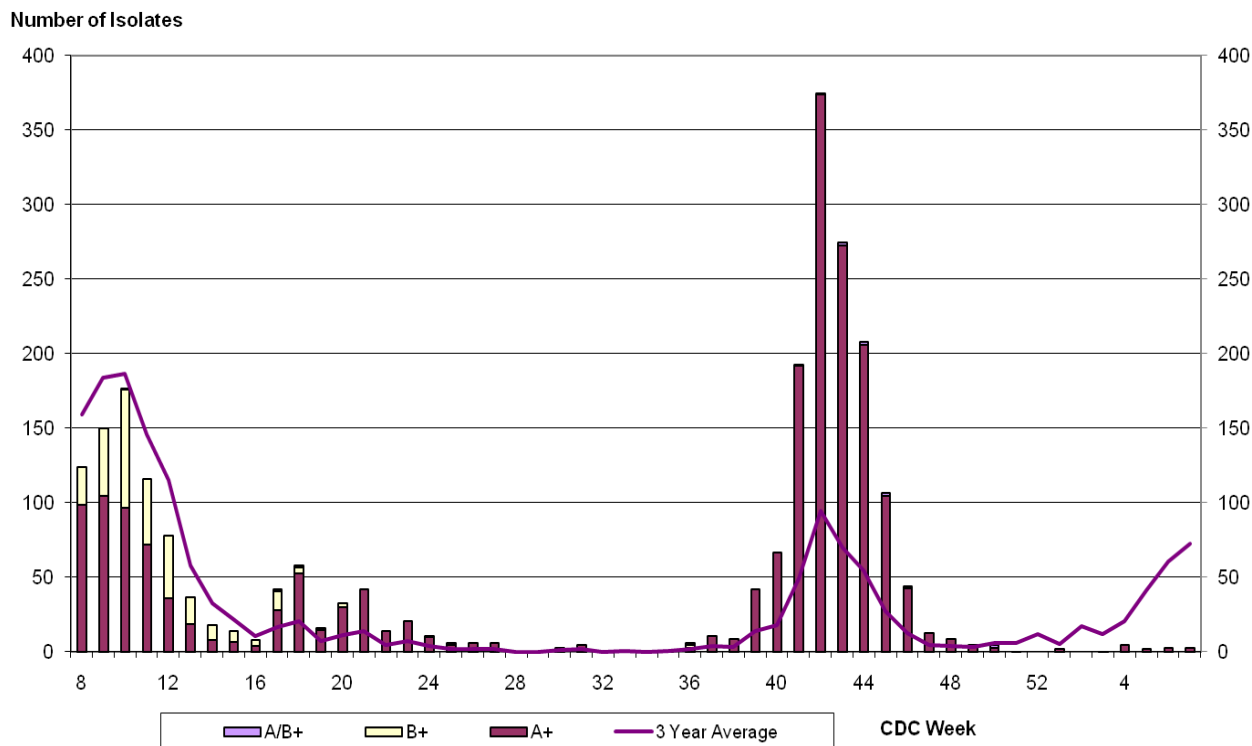


Figure 5 represents the number of positive rapid influenza (broken down by influenza sub-typing) compared to a 3-year historical average. The previous fifteen weeks were above the historical average, but Weeks 50 of 2009 through Week 7 of 2010 are below.

## Total H1N1 Hospitalizations

Onset of Symptoms, Winnebago County since Week 35

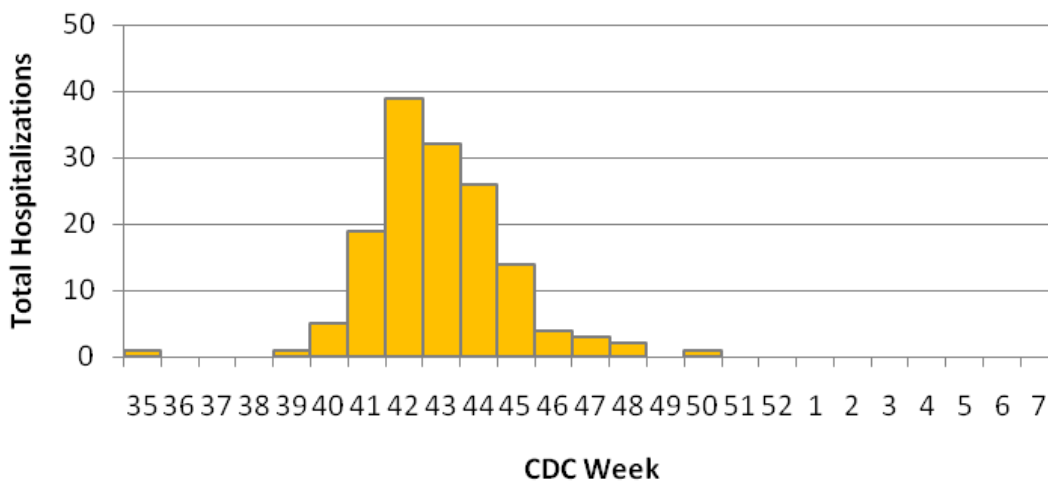


Figure 6, above, shows the number of H1N1 hospitalizations by onset of symptoms and week for Winnebago County. Please note the large spike in cases beginning in week 41. Also, there were no new confirmed cases with onset of symptoms in Weeks 49, 51, and 52 of 2009 in addition to Weeks 1 through 7 of 2010.

# H1N1 Cases by Age and Week

Winnebago County, IL

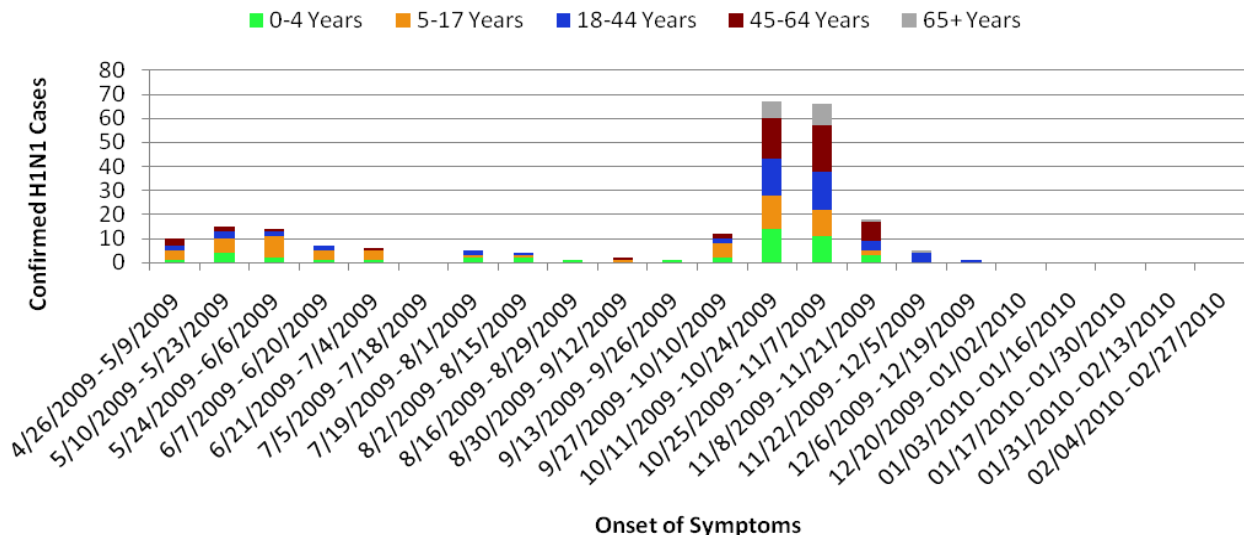


Figure 7 is representative of all H1N1 cases by age and bi-week periods. There had been a large increase in case numbers in previous two, two-week periods, but there has been a decline lately. Also, the majority of cases were in those under 18 years old, but more recent cases have been documented in those over the age of 18. There were no new cases week ending 02/20/2010.

Age Range	Total Cases n / %	Percent of Hospitalizations n / %
0 - 4	45 / 19%	27 / 17%
5 - 17	62 / 26%	27 / 17%
18 - 44	54 / 23%	39 / 24%
45 - 64	55 / 24%	50 / 31%
65 +	18 / 8%	18 / 11%
Total	234 / 100%	161 / 100%

Below, Novel H1N1 influenza by Gender

Gender	N	%
Male	105	45%
Female	129	55%

Above, Novel H1N1 cases by age and hospitalizations by age

Age Range	1 mo - 85 yrs
Mean	27.67 yrs
Median	20.5 yrs

Left, age range, mean and median for Novel H1N1 influenza

Below, various statistics for Novel H1N1 Confirmed cases, as of February 20, 2010

	Unhospitalized Cases (%) (n = 49)	Hospitalized (%) (n = 158)	All (%) (n=207)
<b>Comorbidity/ Risk Factors</b>			
Asthma	(7) 14.3	(54) 34.1	29.5
Diabetes	(1) 2.1	(26) 16.4	13.0
Pregnancy	(1) 2.1	(4) 2.5	2.4
Immunocompromised	-	(13) 8.2	6.3
None Disclosed	(40) 81.5	(70) 44.3	53.1
<b>Seasonal Influenza Vaccination</b>			
Received	(4) 8.3	(3) 1.9	3.4
Did Not Receive	(15) 31.3	(13) 8.2	13.5
Unknown	(30) 60.4	(142) 89.9	83.1

## Novel H1N1 Laboratory Submissions

Week	Winnebago County			Out of Jurisdiction		
	Submitted	Positive	Percent Positive	Submitted	Positive	Percent Positive
Ending 11/07	91	31	34%	19	2	10%
Ending 11/14	77	21	27%	17	0	0%
Ending 11/21	50	7	14%	17	0	0%
Ending 11/28	37	3	5%	7	0	0%
Ending 12/05	32	3	6%	12	0	0%
Ending 12/12	34	0	0%	8	0	0%
Ending 12/19	36	1	3%	6	0	0%
Ending 12/26	34	0	0%	10	0	0%
Ending 01/02	36	0	0%	5	0	0%
Ending 01/09	29	0	0%	8	0	0%
Ending 01/16	31	0	0%	4	0	0%
Ending 01/23	14	0	0%	3	0	0%
Ending 01/30	28	0	0%	7	0	0%
Ending 02/06	33	0	0%	4	0	0%
Ending 01/13	40	0	0%	9	0	0%
Ending 01/20	28	0	0%	5	0	0%
<b>Total</b>	<b>1349</b>	<b>224</b>	<b>17%</b>	<b>311</b>	<b>10</b>	<b>3%</b>

Figure 7 shows the number of Novel H1N1 submissions from both residents and non-residents of the County. Overall 1660 Novel H1N1 tests have been submitted, 234 (14%) being positive. In addition, Winnebago County has experienced 5 deaths from the Novel H1N1 Influenza.

### Outside the County:

Illinois influenza activity (as of week 7):  
Sporadic

Illinois number of Novel H1N1 influenza hospitalizations:  
2,962

Illinois number of Novel H1N1 influenza deaths:  
102

Source: Illinois Department of Public Health

United States influenza activity (as of Week 7):  
Regional in 3 States/Territories  
Local in 9 States/Territories  
Sporadic in 37 States/Territories

U.S. number of Novel H1N1 influenza cases for Week 7:  
116

U.S. cumulative number of Novel H1N1 influenza cases:  
63,798 Week 35 through Week 7

Source: Centers for Disease Control and Prevention



#### Questions/Comments?

Zachary McCormic, MPH  
Epidemiologist  
Health Promotion and Protection  
Winnebago County  
Health Department  
401 Division Street  
Rockford, IL 61107  
815-720-4215



**Public Health**  
Prevent. Promote. Protect.