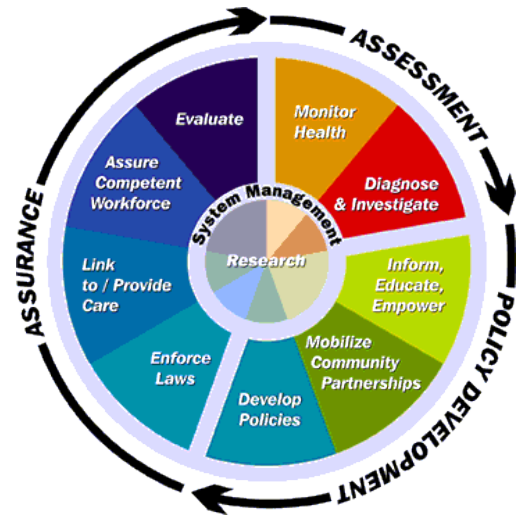




Report to the Board of Health – July 2016

Winnebago County Health Department Leadership Team

- Sue Merchen – Public Information Officer
- Theresa James – Emergency Response Coordinator
- Todd Kisner, MPH – Center Director, Health Protection
- Todd Marshall, LEHP – Center Director, Environmental Health Improvement
- Patrick Madigan – Finance Director
- Karalyn Nimmo, MPH – Data and Quality Coordinator



Domain I – Monitor Health

Environmental Health Improvement (EHI) continues to monitor for critical violations for all EH programs to identify areas where more education is needed for food operators, contractors, and landlords.

Indoor Air Monitoring

| | # of Units | CO ₂ | Temp | Humidity | CO |
|-----------------|------------|-----------------|------|----------|---------|
| Month Average | 5 | 1213 ppm | 77.3 | 60.5 | 0.5 ppm |
| Month Max | 5 | 1677 ppm | 82.2 | 74.7 | 1.0 ppm |
| YTD Overall Avg | 21 | 967 ppm | 72.9 | 45.3 | 0.7 ppm |
| YTD Overall Max | 21 | 2363 ppm | 83.4 | 74.7 | 3.3 ppm |

| | CO ₂ | CO | YTD-CO ₂ | YTD-CO |
|---|-----------------|-------|---------------------|--------|
| IDPH Guideline (ppm) | > 1,000 | > 9.0 | > 1,000 | > 9.0 |
| Homes with at least one reading exceeding guideline | 5 | 0 | 16 | 0 |
| % of Homes Monitored | 75.0% | 0.0% | 64.0% | 0.0% |
| Homes whose overall average exceeds guideline | 4 | 0 | 12 | 0 |
| % of Homes Monitored | 80.0% | 0.0% | 48.0% | 0.0% |

Radon

| | Phone Calls | Number of Units | Radon Screenings | Average (pCi/L) | Max (pCi/L) | Number of Mitigation |
|---------------|-------------|-----------------|------------------|-----------------|-------------|----------------------|
| July 2016 | 7 | 3 | 3 | 2.3 | 5.8 | 0 |
| FY16 to Date | 90 | 39 | 39 | 4.6 | 32.8 | 2 |
| Program total | 131 | 63 | 63 | 5.4 | 32.8 | 10 |

The EPA strongly recommends that homeowners install radon mitigation in homes at or above 4.0 pCi/L, and that homeowners should consider mitigation at levels between 2.0 and 4.0 pCi/L.

WCHD received 100 home radon test kits from Illinois Environmental Protection Agency (EPA). These test kits will provide homeowners with laboratory-certified radon readings. WCHD will charge \$10 per kit and will use the funds for additional test kits so that a supply for homeowners can be sustained. WCHD is currently developing protocol for tracking income, inventory, results, and follow-up for the issued kits. WCHD is also developing educational materials and outreach plans for the radon program as well, including the Winnebago County Fair in August.

Mosquito Surveillance and Control

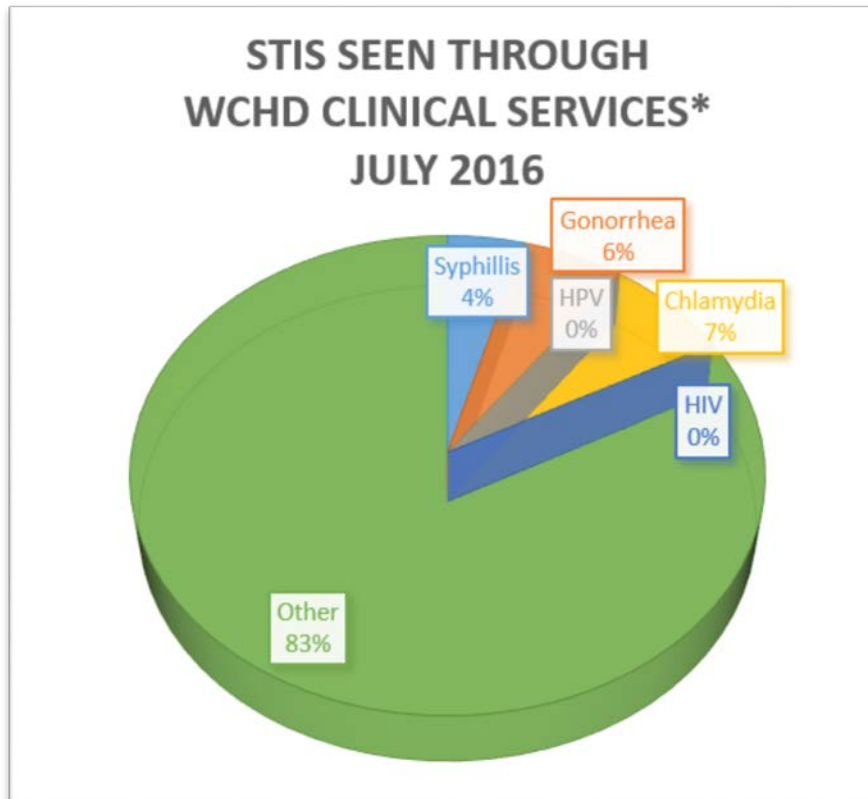
Amplification of West Nile Virus (WNV) in Winnebago County has increased due to weather conditions. To date, the WCHD has confirmed three (3) positive mosquito pools and one (1) positive bird (verified by IDPH). In response to the amplified WNV activity, program staff have contacted Neighborhood Networks to send out a second round of educational material to neighborhood associations throughout the county.

Illinois Youth Survey (IYS)



Results from the Illinois Youth Survey (IYS) are scheduled to be released during September, from the Center for Prevention, Research, and Development (CPRD), to the schools that participated in the survey. Overall county results are not expected until the end of 2016. The results will be used by the Winnebago County Substance Abuse Prevention Coalition (WCSAPC) to determine priorities for their strategic plan and will be included in public awareness campaigns.

Sexually Transmitted Infections (STIs)



| STIs Seen Through WCHD Clinical Services | YTD 2016 | | 2015 Year Total Cases | 2014 Year Total Cases |
|--|----------|--|-----------------------|-----------------------|
| Syphilis | 8 | | 9 | 5 |
| Gonorrhea | 40 | | 75 | 117 |
| HPV | 2 | | 44 | 111 |
| Chlamydia | 81 | | 197 | 339 |
| HIV | 1 | | 2 | 0 |

*"STIs Seen" represents treatment and/or diagnosis in WCHD Clinical Services

- Domain 2 – Diagnose and Investigate**

CLSR (Creating Lead Safe Rockford) 2013 Objectives Note

| | Goal | Actual | Percent |
|-----------------|------|--------|---------|
| Units Enrolled | 300 | 186 | 62.0 % |
| Inspections | 250 | 169 | 67.6 % |
| Mitigated Units | 225 | 130 | 57.8% |

The CLSR 2013 program officially ended its period of performance on July 31, 2016 and is now into its three-month closeout period. Program staff have sent notices to all partners terminating all memorandums of understanding (MOUs) and have signed all final contracts for remaining mitigation work.

The CLSR program was awarded funding for a new three-year Lead Hazard Control grant which will pick up where CLSR 2013 left off. Significant changes for this CLSR 2016 program include a lower match commitment, lower property owner fees, and additional funding for Healthy Homes intervention work. WCHD and HUD have not entered into a grant agreement, however program staff have been notified that negotiations to finalize the grant agreement will begin in the next couple of weeks.

Food Complaints

| | Month | FY 2016 | FY 2015 |
|---------------------------------------|-------|---------|---------|
| # of Foodborne Illness Complaints | 1 | 26 | 32 |
| # of Foodborne Illness Investigations | 1 | 26 | 32 |
| # of Non-foodborne Illness Complaints | 18 | 148 | 142 |

Housing Complaints

| | Month | FY 2016 | FY 2015 |
|-----------------------------|-------|---------|---------|
| # of Housing Complaints | 80 | 611 | 618 |
| # of Nuisance Complaints | 27 | 259 | 191 |
| # of Survey Complaints | 23 | 369 | 335 |
| # of Received Complaints | 140 | 1222 | 1316 |
| # of Re-check on Complaints | 346 | 3572 | 3466 |

Well and Septic Complaints

| | Original complaints | Recheck complaints | FY16 Original complaints | FY16 Recheck complaints | FY15 Original complaints | FY15 Recheck complaints |
|--------|---------------------|--------------------|--------------------------|-------------------------|--------------------------|-------------------------|
| Wells | 4 | 2 | 21 | 27 | 17 | 24 |
| Septic | 2 | 2 | 28 | 18 | 17 | 38 |

Update on Robey Avenue Wells

The status of the Robey Avenue wells has not change since last month. Out of the four (4) houses that were confirmed for the presence of E.Coli bacteria, three (3) have connected over a month ago to the City of Rockford public water supply. The last house remains condemned until an alternative water source has been provided. Further follow-up with the owner indicates that this property may be placed on the market despite the condemned status.

Communicable Diseases

| Vaccine Preventable Diseases (Reporting timeframe) | July 2016 Confirmed Cases | 2016 YTD Investigated & Determined "Not a Case" | 2016 YTD Total Confirmed Cases | 2015 Year Total Confirmed Cases | 2014 Year Total Confirmed Cases |
|---|---------------------------|---|--------------------------------|---------------------------------|---------------------------------|
| Chickenpox (Varicella) (24h) | 0 | 2 | 0 | 2 | 3 |
| Diphtheria (immediate) | 0 | 0 | 0 | 0 | 0 |
| Haemophilus influenzae, invasive (24h) | 0 | 0 | 1 | 5 | 7 |
| Hepatitis A (24h) | 0 | 3 | 1 | 0 | 1 |
| Hepatitis B-Acute Infection (7d) | 0 | 0 | 1 | 1 | 2 |
| Hepatitis B-Chronic (7d) | 2 | 2 | 12 | 2 | 28 |
| Hepatitis C-Acute (7d) | 0 | 2 | 0 | 1 | 0 |
| Hepatitis C-Chronic (7d) | 6 | 45 | 89 | 239 | 235 |
| Hepatitis D (7d) | 0 | 0 | 0 | 1 | 1 |
| Influenza deaths in < 18 yrs old (7d) | 0 | 0 | 0 | 0 | 0 |
| Influenza A, variant (immediate) | 0 | 0 | 0 | 0 | 0 |
| Influenza, ICU admissions (24h) | 0 | 5 | 3 | 6 | 15 |
| Measles (rubeola) (24h) | 0 | 0 | 0 | 0 | 0 |
| Mumps (24h) | 0 | 3 | 0 | 0 | 0 |
| Neisseria meningitidis, invasive (24h) | 0 | 0 | 0 | 0 | 0 |
| Pertussis (whooping cough) (24h) | 0 | 1 | 2 | 9 | 16 |
| Polomyelitis (immediate) | 0 | 0 | 0 | 0 | 0 |
| Rubella (24h) | 0 | 1 | 0 | 0 | 0 |
| Streptococcus pneumoniae, invasive disease, in those < 5 yrs old (7d) | 0 | 0 | 0 | 3 | 2 |
| Tetanus (7d) | 0 | 0 | 0 | 0 | 0 |
| Sexually Transmitted Infections | | | | | |
| AIDS (7d) | 0 | 0 | 0 | 11 | 11 |
| Chancroid (7d) | 0 | 0 | 0 | 0 | 0 |
| Chlamydia (7d) | 133 | 19 | 1076 | 1751 | 1702 |

| | | | | | |
|---|----|----|-----|-----|-----|
| Gonorrhea (7d) | 47 | 2 | 413 | 544 | 443 |
| HIV infection (7d) | 0 | 0 | 2 | 18 | 18 |
| Syphilis (7d) | 3 | 0 | 11 | 22 | 8 |
| Other Communicable Diseases | | | | | |
| Anaplasmosis (7d) | 0 | 0 | 0 | 0 | 0 |
| Any suspected bioterrorist threat (immediate) | 0 | 0 | 0 | 0 | 0 |
| Any unusual case or cluster of cases that may indicate a public health hazard (immediate) | 0 | 0 | 0 | 0 | 0 |
| Anthrax (immediate) | 0 | 0 | 0 | 0 | 0 |
| Arboviruses (7d) | 0 | 0 | 0 | 0 | 0 |
| Babesiosis (7d) | 0 | 0 | 0 | 0 | 0 |
| Botulism, foodborne (immediate) | 0 | 0 | 0 | 0 | 1 |
| Botulism, infant, wound, other (24h) | 0 | 0 | 0 | 0 | 0 |
| Brucellosis (24h unless bioterrorism suspected, then immediate) | 0 | 0 | 0 | 0 | 0 |
| Campylobacteriosis (Became Reportable in 2016) | 5 | 14 | 19 | n/a | n/a |
| Chikungunya Non-neuroinvasive Disease (7d) | 0 | 0 | 0 | 0 | 0 |
| Cholera (24h) | 0 | 0 | 0 | 0 | 0 |
| Creutzfeldt-Jakob Disease (7d) | 0 | 0 | 0 | 0 | 0 |
| Cryptosporidiosis (7d) | 0 | 1 | 3 | 5 | 4 |
| Cyclosporiasis (7d) | 0 | 0 | 0 | 0 | 0 |
| Dengue (7d) | 0 | 1 | 0 | 0 | 0 |
| Drug-resistant organism, extensively (7d) | 0 | 0 | 0 | 0 | 0 |
| Ehrlichiosis (7d) | 0 | 1 | 0 | 0 | 0 |
| Enteric E. coli infections (STEC,O157:H7, ETEC, EPEC, EIEC) (24h) | 0 | 2 | 4 | 7 | 5 |
| Foodborne or waterborne outbreaks (24h) | 0 | 0 | 0 | 0 | 0 |
| Hantavirus pulmonary syndrome (24h) | 0 | 0 | 0 | 0 | 0 |
| Hemolytic uremic syndrome, post diarrheal (24h) | 0 | 0 | 0 | 0 | 0 |
| Histoplasmosis (7day) | 0 | 1 | 0 | 0 | 0 |
| Legionellosis (7d) | 1 | 0 | 4 | 8 | 3 |
| Leprosy (7d) | 0 | 0 | 0 | 0 | 0 |
| Leptospirosis (7d) | 0 | 0 | 0 | 0 | 0 |
| Listeriosis (7d) | 0 | 0 | 0 | 0 | 0 |
| Lyme disease (7d) | 1 | 17 | 2 | 7 | 8 |
| Malaria (7d) | 1 | 0 | 1 | 1 | 0 |
| Ophthalmia neonatorum (gonococcal) (7d) | 0 | 0 | 0 | 0 | 0 |
| Outbreaks of public health significance (24h) | 0 | 0 | 0 | 0 | 0 |
| Plague (immediate) | 0 | 0 | 0 | 0 | 0 |

| | | | | | |
|---|---|----|-----|-----|-----|
| Psittacosis (7d) | 0 | 0 | 0 | 0 | 0 |
| Q fever (2 4h unless bioterrorism suspected then immediate) | 0 | 0 | 0 | 0 | 0 |
| Rabies, human and potential human exposure and animal (24h) | 0 | 0 | 1 | 16 | 1 |
| Reye syndrome (7d) | 0 | 0 | 0 | 0 | 0 |
| Salmonellosis, other than typhoid (7d) | 0 | 0 | 23 | 57 | 40 |
| Severe Acute Respiratory Syndrome (SARS) (immediate) | 0 | 0 | 0 | 0 | 0 |
| Shigellosis (7d) | 5 | 0 | 106 | 116 | 21 |
| Smallpox (immediate) | 0 | 0 | 0 | 0 | 0 |
| Smallpox vaccination, complications of (24h) | 0 | 0 | 0 | 0 | 0 |
| Spotted fever rickettsioses (7d) | 0 | 1 | 0 | 0 | 0 |
| S. aureus, Methicillin resistant (MRSA) clusters (two or more lab confirmed cases) in a community setting (24h) | 0 | 0 | 0 | 0 | 0 |
| S. aureus, Methicillin resistant (MRSA) in infants <61 days (24h) | 0 | 4 | 4 | 9 | 11 |
| S. aureus infections with intermediate or high level resistance to vancomycin (24h) | 0 | 0 | 0 | 0 | 0 |
| Streptococcal infections, Group A, invasive including STSS and necrotizing fasciitis (24h) | 0 | 0 | 4 | 11 | 6 |
| Toxic shock syndrome due to S. aureus (7d) | 0 | 0 | 0 | 0 | 0 |
| Trichinosis (7d) | 0 | 0 | 0 | 0 | 0 |
| Tuberculosis (7d) | 0 | 0 | 0 | 0 | 6 |
| Tularemia (24h unless bioterrorism suspected then immediate) | 0 | 0 | 0 | 0 | 0 |
| Typhoid fever (24h) | 0 | 0 | 0 | 0 | 0 |
| Typhus (24h) | 0 | 0 | 0 | 0 | 0 |
| Vibriosis (non cholera) (7d) | 0 | 0 | 1 | 2 | 1 |
| Yersiniosis (7d) | 0 | 0 | 0 | 0 | 0 |
| West Nile Fever | 0 | 1 | 0 | 0 | 0 |
| Zika Virus | 0 | 11 | 0 | n/a | n/a |

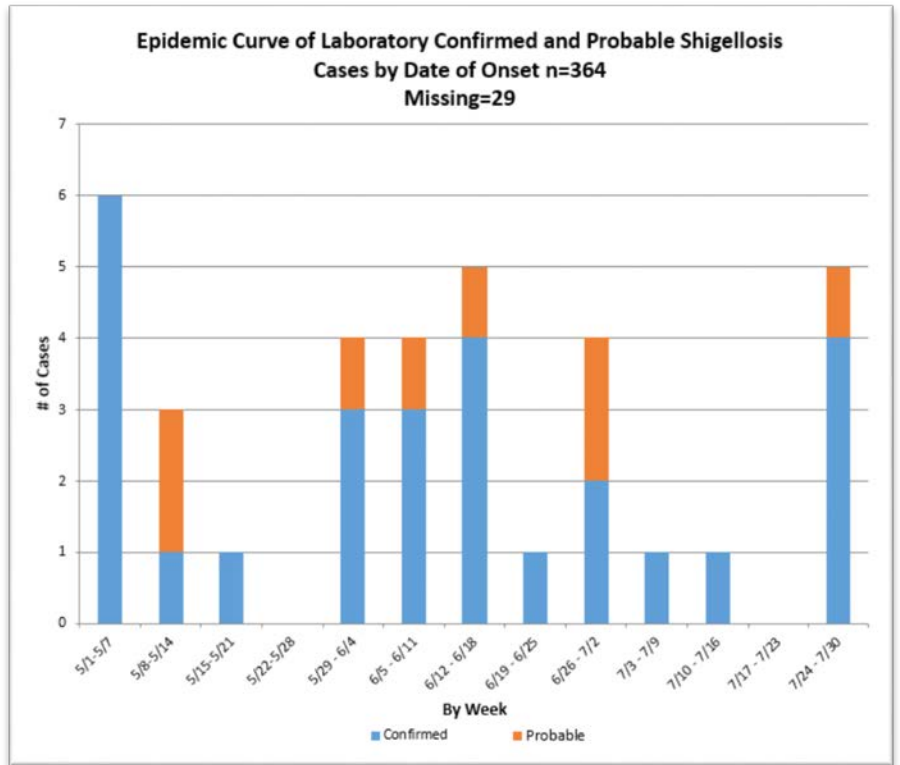
* The above table represents only those reportable diseases that have been received this month and year to date in comparison to the previous two year totals.

* "Investigated & Determined Not a Case" Column indicates an investigation was completed on a "probable" case of the disease noted. As the final diagnosis was not the specified disease, then the investigation work falls in this reporting category.

Communicable Disease Activities

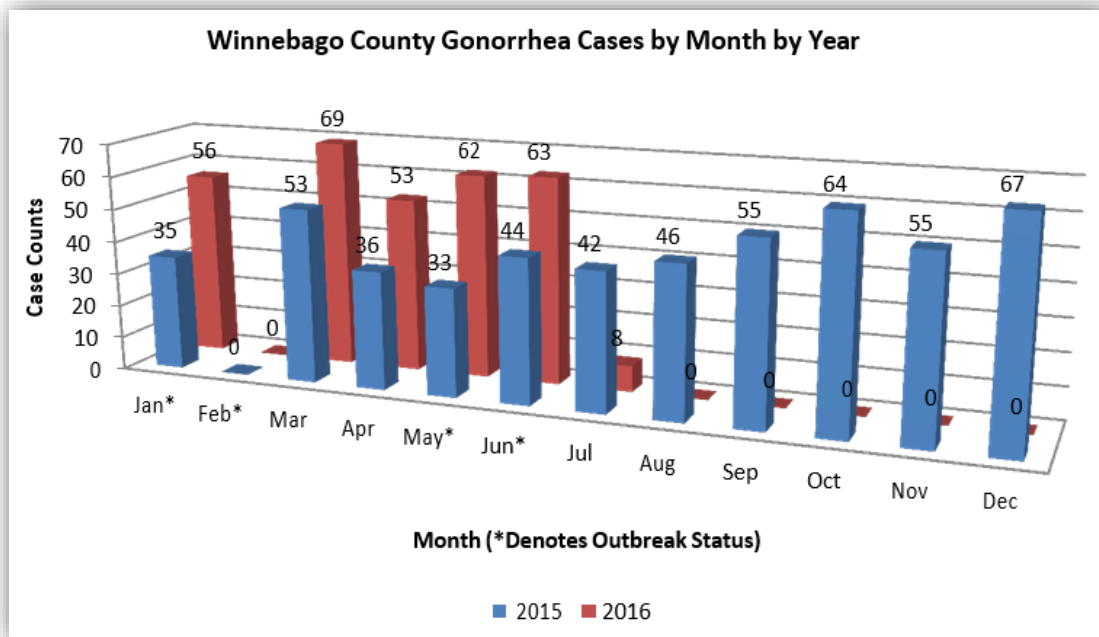
1. Shigella Outbreak:

Shigella continues to be present in the community at a lower number of cases in July than in June. July saw ten (10) cases in the community. The graph below represents the last 90 days in the community outbreak. Total number of cases since the outbreak began in October 2015 is 364.



2. Increase in Gonorrhea Cases:

Winnebago County is experiencing an increase in the total number of gonorrhea cases reported year-to-date is 50% greater than the previous year for the same time period. In response, the first step taken by WCHD was to notify health care partners of the current increase in infections. The Health Alert of August 9, 2016, provided the necessary information to our health care partners. WCHD is strategizing on additional measures to control and reduce the infection in the community. The following chart denotes the Year 2015 cases compared to those received to date in Year 2016:



3. Zika Virus Disease:

WCHD has authorized a total of sixteen (16) requests for Zika Virus testing. As of July, WCHD has received fourteen (14) negative testing results; two (2) authorized tests did not provide a blood sample to complete testing.

The Communicable Disease Team continues to provide the opportunity for Zika testing to an individual who meets the CDC eligibility criteria for testing in conjunction with the Illinois Department of Public Health (IDPH). A request for Zika virus testing should be initiated by health care provider when testing criteria is met in collaboration with the Health Department.

4. Seasonal Influenza:

WCHD is actively planning for the upcoming influenza season. Vaccine orders have been finalized in regards to the total number of immunizations that will be available through WCHD. WCHD Flu Clinic sites are being confirmed throughout the County. The Communicable Disease Team will be convening a meeting with our influenza surveillance partners to review/modify any reporting procedures in the upcoming season. The Weekly Influenza Report will also be discussed to determine the need of what information the surveillance partners would have included in the report.

- **Domain 3 – Inform, Educate, and Empower**

- Posting Food inspection Results on Website

Quality Improvement committee has designated time to meet twice a month. The committee is in the process of developing a “Charter” to help outline goals and objectives which includes everyone’s role, an aim statement, scope of work, success measures, and timelines to complete the project. Additional internal oversight will be implemented to ensure consistency between food inspectors when marking violations. Standardization is the “key” to make this initiative successful and fair to all food operators when their inspection scores are posted for the public.



- West End Neighborhood Educational Meeting

Program staff held it’s first of two neighborhood informational meetings on July 28th at Ingersoll Golf Course. Attendance was higher than expected with approximately 65 individuals in attendance. WCHD presented information regarding specific concerns in the area, its process for code enforcement, and services available to residents. The meeting included opportunities for residents to ask questions and raise their concerns. Program staff have seen a small increase in cooperation with residents in the area following this meeting. WCHD will follow up by conducting targeted inspection surveys in areas with historically low compliance. WCHD plans on conducting at least one more similar event this year.



- Prairie Road Pump Neighborhood Association Presentation

On July 21st, a meeting took place with the Neighborhood Association Board, the Health Department and their engineer to further discuss how to proceed forward this project. The main points of discussion was:

- Violation Notice from IEPA (extent of the problem)

- What would the low interest loan cover to address the problem?
- What would be the final monthly cost to the association?

It was decided by the Board to proceed forward with replacing the storage tank and if affordable, all the distribution lines throughout the neighborhood. Their engineer will provide preliminary numbers for both options and present it at the next meeting scheduled in late August.

Substance Abuse Youth Prevention Education

| School Name | # of Students | Day of Week and Hours Sessions Provided | Start and End Dates of Sessions | Other Information |
|---|---------------|---|---------------------------------|--|
| <u>Summer Locations</u> | | | | <u>Contacts:</u> Mike Ayers at Boys/Girls Club Nikki Lynch at WPCC |
| Washington Park Community Center | 30 | 1 day/wk. @1 hour | June - July | Female group only |
| Blackhawk Boys and Girls Club | 10 | 1 day/wk. @1 hour | June - July | The number of girls fluctuate each week but the average is around 10 a week |

With the current Prevention Specialist leaving this position, discussion is now focused on more community awareness and coalition emphasizing a population approach as compared to group setting curriculum emphasizing individuals in a limited number of schools.

Social Norms Marketing (SNM) Campaign

Harlem High School Business Marketing faculty will be contacted at the beginning of the school year to determine if school will initiate the Instagram Healthy Lifestyles project to increase tobacco free attitudes that was started in April 2016.

Adolescent Health: Primary Prevention thiNk (Teen Pregnancy Prevention)

Pregnancy Prevention Groups: July

| Location | # groups held | # of people involved | Action Steps |
|----------------------------------|---------------|----------------------|--|
| Juvenile Probation | 3 | 7 | Groups end in August with Rewards Activity |
| Blackhawk Boys and Girls Club | 2 | 8 | Groups end in August with Rewards Activity |
| Washington Park Community Center | 4 | 28 | Groups end in August with Rewards Activity |
| Rosecrance | 5 | 9 | Groups end in August with Rewards Activity |

The Prevention Specialist for the Teen Pregnancy Prevention is currently recruiting for new members of groups to be offered in the fall and spring within several Rockford Area Middle Schools. Recruitment has occurred at recent back to school programs, within the family planning clinic of WCHD, parent open houses, and school registration sessions. Grant planning and development will occur in the month of August to begin action steps for grant deliverables.



THAT Coalition (Teen Health Advisory Team):

| # Meetings | # Coalition Members at Meetings | Outcome |
|------------|---------------------------------|--|
| 0 | 0 | No meetings for coalition were held in July. |

Prevention Specialist continues to research new trends and materials to supplement school curriculum. The Health Promotion Team will meet to begin planning for coalition member recruitment and training for FY17. Coalition training and development of a strategic plan may result in a collaborative effort with the substance abuse coalition monitored by the SAPP grant at WCHD.

Electronic and Social Media Contacts for June 2016



| | | | |
|--------------------------|-------------------------|----------------------------|-------------------|
| WCHD Website Page | 9,793 Page Views | 3,529 Sessions | 2,856 Users |
| Facebook | 623 Avg. Weekly Reach | 31 Avg. Weekly Engagements | 619 Total "Likes" |
| Twitter | 44.0K Tweet Impressions | 3 New "Likes" | 709 Followers |
| Intranet Page | 31 Page Views | 31 Sessions | 31 Users |

Since July of 2015, WCHD’s websites and social media platforms have either grown extensively or have stayed steady with visitors, viewers, and impressions, with the exception of the Intranet. The WCHD’s public website has been consistent with an average of 2,900 people accumulating over 3,800 sessions and viewing over 10,000 pages each month. WCHD’s Facebook page reaches over 2,000 people per month with an average of 100 engaged in the conversation, and has received over 100 new likes this past year. The platform with the most growth is WCHD’s Twitter page. From July 2015 to July 2016 the site has gone from 600 impressions to an average of 2,000 per month. The WCHD Employee Intranet usage has decreased over the past year and has gone from over 900 sessions, to an average of 118 over the past three months.

- **Domain 4 – Mobilize Community Partnerships**

Winnebago County Health Department renewed its commitment to work with the University Of Illinois College Of Medicine Rockford to provide opportunities for its students to work on community projects under the leadership of Dr. Linda Chang. Specifically support was asked for students interested in working on the Community Health Improvement Plan priorities to assist in determining evidence-based activities to support the plan. Assistance was also asked for pharmacy students to develop policies around dispensing of medications in WCHD clinics and mass distribution during a public health emergency.

Substance Abuse Prevention Coalition

The goal of the Coalition is to increase the number of representatives along with increase awareness activities in Winnebago County. The following chart represents the meeting activities of the coalition.

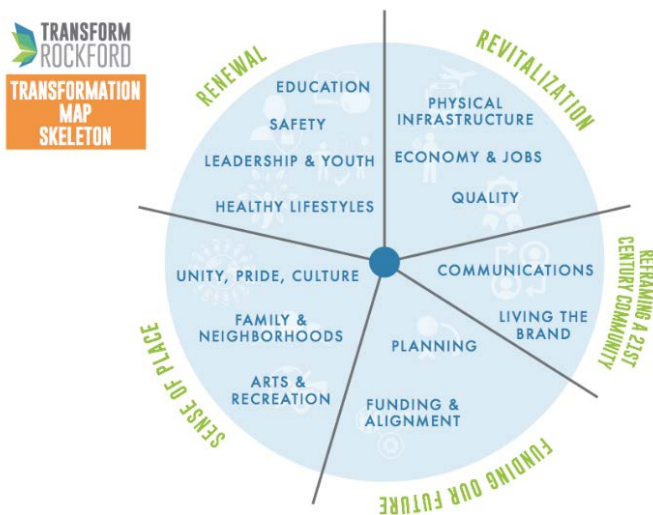
| Month | Date of Coalition Meeting | # hours provided by ATOD | # members attending | |
|-----------------|---------------------------|--------------------------|---------------------------------|----------------|
| July | 7/12/16 | 1.5 | 8 | Town Hall Plan |
| FY Total | | 1.5 Direct Service Hours | 8 Average members in attendance | |

Upcoming Activities:

September 8, 2016, 6-8 pm, Harlem High School Commons.

The Substance Abuse and Mental Health Services Administration (SAMSHA) will conduct a Communities Talk Town Hall meeting to prevent underage drinking. The Winnebago County Substance Abuse Prevention Coalition (WCSAPC) is sponsoring the program with assistance from a small grant from SAMSHA written by a Rock Valley College coalition member. Information is being placed in all media outlets, superintendents and principals meetings, parent organizations, and local events such as National Night Out and Winnebago County Fair.

This event will provide information to parents regarding the Illinois Social Host law as well as inspirational and interactive information for parents to use to help their children make healthy choices when faced with an underage drinking situation. WCSAPC is looking for as many parents as possible to attend and would like to see schools provide incentives for parents to come and learn. Food and other vendor information will also be available for parents.



Transform Rockford

Dr. Martell continued to represent the Winnebago County Health Department on the Transform Rockford (TR) Healthy Lifestyles workgroup.



Business First

WCHD continues to participate in the BusinessFirst Initiative. There has been no further discussion from the leaders of each participating agency since March 11th. The city of Rockford, which

facilitates this initiative, has been going through some organizational restructuring. Once they appoint their replacement, participating agency’s leaders will continue to review and improve the efficiency and effectiveness of this well needed initiative.

- Domain 5 – Policies and Plans**

- IPLAN Community Assessment

The final IPLAN Document is underway. The table below displays which Phases of the MAPP process have been completed. Dr. Martell has requested one more extension. This will allow time to reach out to community partners for the purpose of collaboration on health priorities. This is also an area WCHD needed to improve according to PHAB. The documentation of solid relationships working towards the same goals is critical to the success of improving the health of a community.



| Phase | Description | Status |
|-------|--------------------------------|--------|
| One | Organizing | 100% |
| Two | Visioning | 100% |
| Three | 4 MAPP Assessments | 100% |
| Four | Identifying Strategic Issues | 100% |
| Five | Formulate Goals and Strategies | 90% |
| Six | The Action Cycle | 0% |

Health Priorities
IPLAN 2020

- 1. Maternal Child Health**
- 2. Mental Health**
- 3. Violence**

- Domain 6 – Enforce Laws**



EHI Code Enforcement Stats

| | Monthly Inspection | FY 2016 Inspections | FY 2015 Inspections |
|-----------------|--------------------|---------------------|---------------------|
| Foods | 542 | 3392 | 2749 |
| Wells | 9 | 98 | 71 |
| Septic | 9 | 80 | 79 |
| Loan Inspection | 65 | 483 | 482 |

| | Administrative Hearing Month | In-House Hearing Month | Administrative Hearing (FY16) | In-House Hearing (FY16) | FY 2015 Administrative Hearings | FY 2015 In-House Hearing |
|-------------|------------------------------|------------------------|-------------------------------|-------------------------|---------------------------------|--------------------------|
| Housing | 5 | 30 | 75 | 209 | 96 | 244 |
| Foods | 0 | 1 | 0 | 22 | 0 | 32 |
| Well/Septic | 0 | 3 | 4 | 16 | 4 | 14 |

Report of Food Facility In-house hearings

1. Polish Deli
 3002 Charles St. Rockford, IL
 Date: 7.12.16
 Violations: hand washing, cold/hot holding temperatures, manager certification, domestic equipment

Pools

CoCo Keys remains closed. There has been some action taken on their part to comply with the consent agreement dated August 2015. They have submitted payment for permits, but they must comply with all stipulations to the consent agreement prior to opening. Continued spot checks have been performed to ensure compliance with the closure order.

Illinois Tobacco Free Communities Grant/Smoke-Free Illinois Act

Tobacco Compliance Checks Conducted for FY2016:

| Month | Random Compliance Checks | Targeted Enforcement Complaints | Targeted Out of Compliance | Citations issued | Pre Hearing Calls | In person Administrative Hearings | Number of Environmental Health Referrals (Lack of Signage) |
|-------|--------------------------|---------------------------------|----------------------------|------------------|-------------------|-----------------------------------|--|
| July | 0 | 0 | 0 | 0 | 0 | 0 | 0 |

Environmental health is working with local restaurant owners during food inspections to determine if business is compliant with Smoke Free Illinois Act and provide education and signage for owners to post for compliance.

Calls have been received regarding laws pertaining to the use of E-cigarettes indoors at restaurants and bars. Although the Smoke Free Illinois Act does define “smoking” and references devices, it does not specifically say electronic cigarettes or “vaping”. Health Promotion Supervisor will contact other Local Health Departments to discuss community ordinances that address electronic nicotine delivery systems or “e-cigarettes” and smoking in public places.



HP Supervisor has had several discussions with American Cancer Society asking for assistance in developing a position statement to be provided to local community leaders with current information and direction on the “Tobacco 21” campaign for Winnebago County and local communities. The Policy Committee of the Board of Health has been provided materials to consider its position and adoption of ordinances.

Tobacco Enforcement Program

Currently, WCHD has not received grant funds for checks provided in December and March. WCHD has not reapplied for grant funds for FY2017. WCHD will work with local police departments to develop a plan to address illegal purchasing of tobacco by minors.

- **Domain 7 – Link to/Provide Care**
iGrow



| iGrow – Coordinated Intake for Home Visiting | July 2016 FY16 | June 2016 FY16 | May 2016 FY16 | Total YTD FY16 | Total FY15 |
|---|----------------|----------------|---------------|----------------|------------|
| # CIAT Completed (Coordinated Intake Assessment Tool) | 84 | 110 | 113 | 1050 | 660 |
| # Referred to Partner Home Visiting Programs | 56 | 16 | 13 | 225 | 443 |

Women’s Health Services

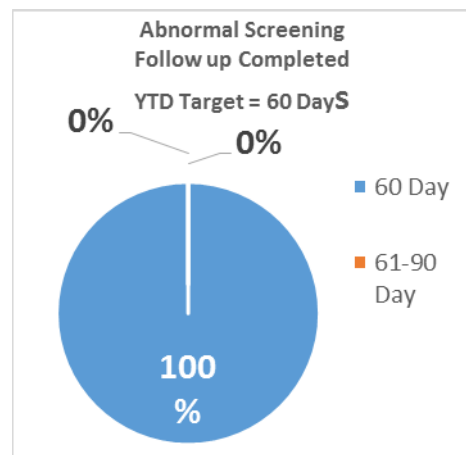
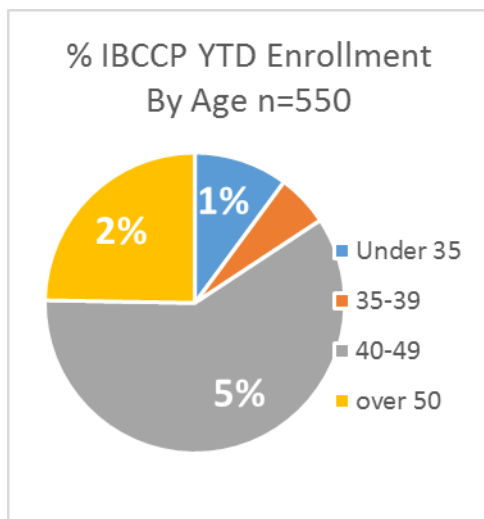
| Family Planning | Jul-14 | Jul-15 | Jul-16 | 2016 YTD |
|-------------------------------|--------|--------|-----------|----------|
| Number of Clients Seen | 426 | 260 | 73 | 426 |
| New Clients | 106 | 44 | 22 | 106 |
| Continuing Clients | 320 | 216 | 51 | 320 |
| Pregnancy Tests | 245 | 120 | 51 | 245 |

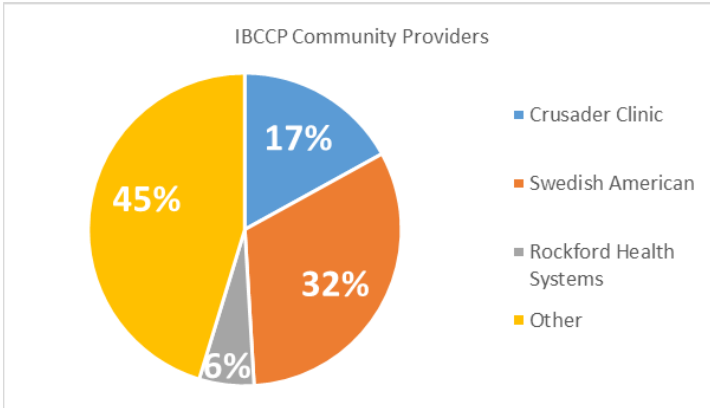
Family Planning

Since April of 2016, the Teen Pregnancy Prevention Specialist has been providing follow-up to all clients with positive pregnancy tests in the integrated clinic to ensure that they are enrolled in Women, Infants, and Children (WIC) Supplemental Nutrition Services and have initiated prenatal care. In the month of July, there were ten (10) clients with positive pregnancy tests who were followed.

Illinois Breast and Cervical Cancer Program (IBCCP)

Currently, there are 32 women involved in the program. Community Awareness activities will take place with upcoming County fair and other health fairs that information can be distributed. A “Styling for Pink” fundraising event; sponsored by the Styling for Pink Foundation will be held on September 25. A table will be purchased by local donations and IBCCP is seeking clients or WCHD staff to attend the event.

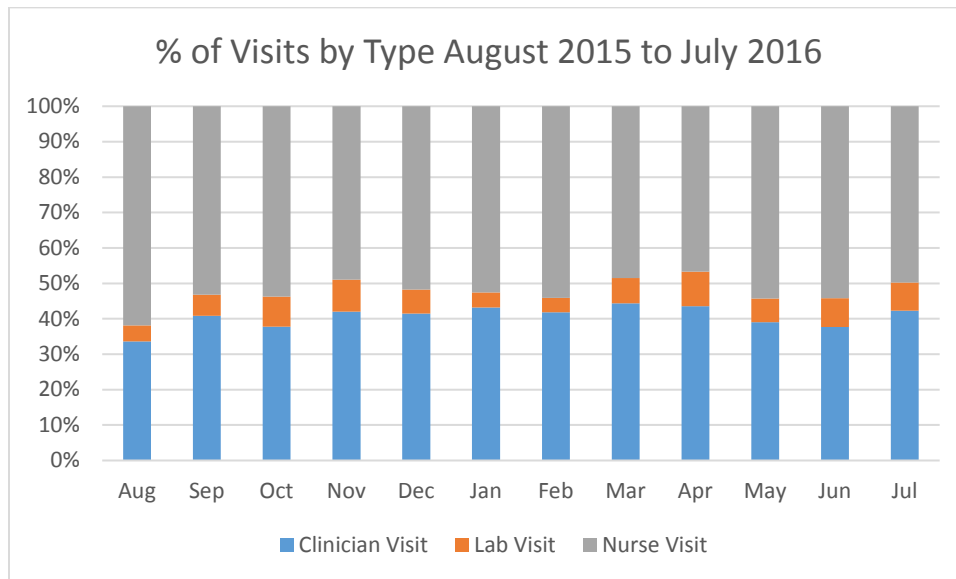




The Winnebago County Health Department continues to partner with Crusader Community Health, Swedish American Health System, and Mercy Health System (aka Rockford Health Systems) and private providers in the community to provide screening and diagnostic services for breast and cervical cancer screening.

Integrated Clinic Services by Visit Type

| WCHD Clinic - Visit Type by Month | | | | | | | | | | | | | |
|-----------------------------------|------------|------------|------------|------------|------------|------------|------------|------------|------------|------------|------------|------------|-------------|
| Visit Type | 2015 | | | | | | 2016 | | | | | | Grand Total |
| | Aug | Sep | Oct | Nov | Dec | Jan | Feb | Mar | Apr | May | Jun | Jul | |
| Clinician Visit | 227 | 303 | 256 | 237 | 232 | 235 | 235 | 254 | 255 | 216 | 195 | 229 | 2874 |
| Lab Visit | 31 | 44 | 58 | 51 | 38 | 23 | 23 | 41 | 57 | 37 | 42 | 43 | 488 |
| Nurse Visit | 418 | 394 | 364 | 276 | 289 | 286 | 304 | 278 | 273 | 300 | 280 | 269 | 3731 |
| Grand Total | 676 | 741 | 678 | 564 | 559 | 544 | 562 | 573 | 585 | 553 | 517 | 541 | 7093 |



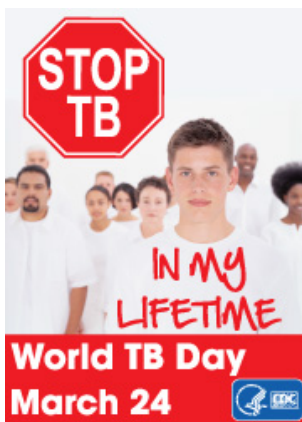
Refugee Health Services

WCHD is responsible for coordinating the delivery of health and health-related services to refugees in the designated service area. WCHD has seen the following number refugees during the current month broken out by gender and year to date (YTD).

| Nationality | Males | Females | 2016 YTD | 2015 Year Total |
|-------------|-------|---------|----------|-----------------|
| Burma | 1 | 0 | 33 | 98 |
| Burundi | 0 | 0 | 8 | 12 |
| Colombia | 0 | 0 | 0 | 4 |
| Congo | 4 | 4 | 10 | 79 |
| Cuba | 0 | 0 | 8 | 16 |
| Eritrea | 0 | 0 | 14 | 2 |
| Ethiopia | 0 | 0 | 1 | 0 |
| Iran | 0 | 0 | 11 | 4 |
| Iraq | 0 | 0 | 10 | 51 |
| Ivory Coast | 0 | 0 | 3 | 0 |
| Rwanda | 0 | 0 | 0 | 7 |
| Sudan | 4 | 2 | 6 | 1 |
| Syria | 8 | 8 | 35 | 35 |
| Thailand | 0 | 0 | 1 | 0 |
| Ukraine | 0 | 0 | 5 | 0 |

Dental Sealant

Dental Providers will be contacted in August to establish a new contract under the Dental Sealant Grant from IDPH and the WCHD. Health Promotion Supervisor will meet with the Rockford Regional Council and the Oral Health Work Group to continue to develop goals and implement services with the assistance of the Dental Sealant Grant. Typically services will begin in September once schools have set a schedule with dental providers.

Tuberculosis Care Center Activities

| Client(s) Seen | |
|---|----|
| New Clients | 41 |
| Returning Clients | 13 |
| Professional Services | |
| Physician Contacts | 15 |
| Medication DOT (direct observed therapy) Visits | 52 |
| Diagnostic Services | |
| Total Active Case(s) in Winnebago County (YTD) | 3 |
| Total Active Case(s) Being Medically Managed Outside of Winnebago County (Ogle) (YTD) | 0 |

The Tuberculosis Care Center at WCHD continues to provide medical oversight and treatment of three (3) active TB cases in the County. Good news is coming from our TB case that was identified through Rockford Memorial earlier this year. The patient is responding to the medication therapy and is in the “continuation stage” of treatment. The direct observation therapy (DOT) for this patient is now down to three (3) days a week compared to the daily DOT that occurred at the beginning of WCHD’s involvement in the case.

- **Domain 8 – Assure Competent Workforce**

July 2016

| Total Employees | Full Time Employees | Part-Time and Seasonal Employees | Employees Utilizing FMLA | New Hires | Separated Employees |
|-----------------|---------------------|----------------------------------|--------------------------|-----------|---------------------|
| 88 | 83 | 5 | 12 | 1 | 1 |

- **Domain 9 – Quality Improvement**

PHAB action plans have been completed. The BOH QI committee members will review and approve the plans in August. The plans need to be uploaded to PHAB by August 23, 2016. After submitting the action plans, documents demonstrating the fulfillment of the measure may be submitted. Accreditation status will be reevaluated once all documents are received.

- **Domain 10 – Evidence-based Practices**

The Communicable Disease Team is reviewing evidence-based strategies to address the increase in gonorrhea cases outlined in Domain 1. As plans are being developed to address the health priorities, evidence based practices are being reviewed for incorporation and implementation in Winnebago County.

- **Domain 11 – Administration and Management**

| WIC /BBO APORS-HRIF | July 2016 FY16 | June 2016 FY16 | May 2016 FY16 | Total FY16 | July 2015 FY15 | Total FY15 |
|---|----------------|----------------|---------------|------------|----------------------------|------------|
| WIC Total Caseload Assigned – SFY15 = 8,359, SFY16 = 7,523 | 6,447 86% | 6,409 85% | 6,239 83% | 6,860 | 6,982 93% | 8,039 |
| FCM (ended 11/30/15) APORS-HRIF total caseload | 189 | 199 | 215 | 3124 | 2653 132% | 2,776 |
| Better Birth Outcomes (BBO) Total Caseload Assigned - SFY15 = 120, SFY16 = 90 | 16 17% | 32 36% | 36 40% | 305 | 81 68% | 545 |

- **Domain 12 – Governance**

Dr. Martell provided an overview of the Community Health Assessment and the input required by Winnebago County Board members on July 14, 2016 following a presentation on Purpose Built Communities and the plans for the Kishwaukee School region. It was an ideal segue to look at how social determinants have an impact on health. The Winnebago County Board members were asked to prioritize health issues and concerns.

*Respectfully submitted on behalf of the Leadership Team by,
Sandra Martell, RN, DNP
Public Health Administrator*