

# Winnebago County Health Department

*...for a safer & healthier community*

## Annual Report



Fiscal Year 2000

The Winnebago County Health Department serves Winnebago County and Northern Illinois and provides services designed to protect, promote, and maintain the health of Winnebago County residents. The services are organized into seven divisions addressing three primary goals: improving the length of life, reducing health disparities, and assuring access to preventive health services for everyone.

*The seven divisions consist of:*

- \* Clinical Health
- \* Disease Control
- \* Community Health Promotion
- \* Health Support
- \* Environmental Health
- \* Operations
- \* Administration

*Available health services and programs through these divisions include:*

- \* Women's Health
- \* WIC (Women, Infants, & Children-Supplemental Food Program)
- \* Immunizations for children and adults
- \* Crusader Primary Care Clinic at the Health Department
- \* Sexually Transmitted Disease Clinic
- \* Tuberculosis Care Treatment Center
- \* Health Screenings (flu shots, cholesterol check, prostate check etc.)
- \* Housing & Nuisance complaints
- \* Inspections (food establishments, spas, wells and septic etc.)
- \* Laboratory (water testing and pollen counts)

### ***A Message from the Administrator...***

Community involvement and collaborations make up a few of the principal cornerstones in public health. It has long been demonstrated that a population can achieve long term health improvement when people become involved in their community, working together to effect change. With improved and expanded services, the Winnebago County Health Department has reached many measures of achievement in Fiscal Year 2000. Its greatest achievement, however, is its increasing collaboration with community organizations. One of the most important such undertakings had its foundation in 1999 when this Department collaborated with eight community entities to conduct a comprehensive community health assessment.

Based upon that assessment, this Department has given high priority to five of the sixteen identified community priority areas and has actively worked in leadership and partnership roles with many other volunteers and community organizations to improve access to services and interventions enriching our community's health.

Many other collaborative partnerships have been initiated in FY 2000, including a partnership with Crusader Clinic to improve access to primary care by setting up a satellite Crusader Primary Care Clinic at the Winnebago County Health Department main office on Division Street. Additionally, the Department's Teen Parent Services program initiated adolescent case management services in full partnership with the Illinois Department of Human Services. Further collaborative efforts involving the University of Illinois College of Medicine and the South Beloit School District have brought the first full year of service to Winnebago County's first school-based clinic.

Lastly, and perhaps most dramatic, is the Department's partnership with the Illinois Department of Public Health and the Regional Superintendent of Schools office in this state's only pilot demonstration for teen anti-tobacco interventions. The success of this project will hopefully foster greater legislative support for the value and cost effectiveness of anti-tobacco interventions at the community level and serve as a resource for other communities looking to expand similar types of services.

The Winnebago County Department of Public Health values its many community partners and looks forward to expanding our involvement with both existing and new partners in our constant challenge to be more efficient and effective in building a safer and healthier community.

Respectfully,

J. Maichle Bacon  
Public Health Administrator

**Mission Statement**

To generate community efforts and interest, to prevent disease, promote health, and assure that vital elements are in place to improve the health of the residents in Winnebago County.

**Vision Statement**

A safer and healthier community for Winnebago County.

**Winnebago County  
Department of Public Health  
401 Division Street  
Rockford, IL 61104  
(815) 962-5092**

**Offsite Locations**

**2909 North Main Street  
Rockford, IL 61103  
Phone: (815) 282-6667**  
Monday - Friday 8 a.m. - 5 p.m.  
Evening Clinics also scheduled  
*Services include: Women's Health, Family Case Management, WIC, & Immunizations*

**1003 Arthur Avenue  
Rockford, IL 61101  
Phone: (815) 963-8306**  
Monday - Friday 8 a.m. - 5 p.m.  
Monday to Thursday-  
Early evening hours available  
*\*effective through fall, 2001*  
*Services include: Family Case Management, WIC, Immunizations*

**Winnebago County  
Board of Health Members**

- \* Alphonso Goode, President
- \* Stephen Kiley, LCSW
- \* John VanLandingham, M.D.
- \* John E. Halverson, DDS
- \* Einar Forsman
- \* Neil Maloney
- \* David R. Helland, DVM
- \* Louise Hoover
- \* Patricia R. Lewis, Ph.D.
- \* Inara McGroarty
- \* Amy Hill
- \* Richard A Warner, M.D.

**Winnebago County Health Report Card**

<i>INDICATOR</i>	<i>WINN. COUNTY</i>	<i>ALL OF ILLINOIS</i>	<i>NATIONAL YEAR 2010 GOAL</i>
<b>INFANT MORTALITY PER 1000 LIVE BIRTHS (1998/1999)</b>			
I.M. 1999	8.9	8.3	4.5
I.M. 1998	6.3	8.2	4.5
*1998 – White	5.1	6.3	N/A
*1998 – Black	13.6	16.8	N/A
*1998 – Hispanic	N/A	N/A	N/A
<b>AGE-ADJUSTED DEATH RATES PER 100,000 PEOPLE (1998)</b>			
All Causes	511.0	882.3	N/A
Motor Vehicle Accidents	17.0	12.6	9.0
Suicide	7.1	8.7	6.0
Lung Cancer	57.1	59.7	44.8
Breast Cancer, female	19.3	29.7	22.2
Heart Disease	237.3	242.4	166.0
Homicide	6.1	9.2	3.2
<b>INDICATORS OF RISK FACTORS (PERCENT)</b>			
Low Birth-weight (1998)	8.3	8.0	5.0
Births to Females aged 10-17 (1999)	4.7	4.3	N/A
No First Trimester Care (1998)	24	18.8	10.0
Children 0-17 Below Poverty (1995)	15.8	18.5	N/A

## OPERATIONS

### **Vital Statistics:**

#### **BIRTHS:**

Births in Winnebago County	4,884
Births to Winnebago County Residents	3,818
Birth Certificates Issued	3,352

#### **DEATHS:**

Deaths in Winnebago County	2,803
Deaths of Winnebago County Residents	2,297
Death Certificates Issued	2,381

## ENVIRONMENTAL HEALTH

### **Food Sanitation:**

Permits Issued to Food Establishments	1,505
Routine Inspections Performed	2,488

### **Water:**

New Private Well Inspections Conducted	112
Well Construction Permits Issued	124
Water Sample Bottles to Homeowners	5,563

### **Solid Waste/Garbage Haulers Licensed:**

Number of Companies	23
(103 Vehicles Licensed)	

### **Lead:**

Lead Screenings Performed	890
Home Visits by Lead Inspector	437

### **Nuisance Complaints:**

Housing/Property	578
Vector (insects, rodents..)	140
Inoperable Vehicles	300
Rubbish/Garbage	812
Unsanitary Living Conditions	49
Hazardous Premises	46
Total Complaint Inspections	1,925

## DISEASE CONTROL

Shigella	59
Animal Bites	600
Bacterial Meningitis	15
Viral Meningitis	29
Blastomycosis	12
Campylobacter	50
Chicken Pox	176
Cryptosporidium	8
E Coli 0157 H7	10
Giardia	46
Group A Strep	15
Hepatitis A	77
Hepatitis B	5
Hepatitis C	1
Histoplasmosis	3
Legionnaires Disease	3
Lyme Disease	6
Pertussis	11
Rash Illness	0
Salmonella	62
Scarlet Fever	50
Strep Throat	5,238
Tuberculosis	7
Gonorrhea	726
Chlamydia	1,196
Syphilis	32
Non-gonococcal urethritis	765
Cervicitis	668
Herpes	46
AIDS	20
HIV	29
Total STD visits	4,356
HIV Tests	2,715

**HEALTH SUPPORT**

Family Case Management - Families Served:	6,993
WIC - Women, Infants, and Children	6,231
High Risk Nursing Clients Served	979
One-year old clients served	1,185
HealthWorks DCFS Wards:	1,231
Medically Case Managed	549
Monitoring for children over age 6	682
Denver Development Screenings	648
School Health Education Sessions	301
Adolescents Served	792
Adolescents in HUGS groups Served	63
Adolescents in Community Groups	428
At-risk youth	28
At-risk male youth	20
Social Work Referrals	182
Prevention Initiative	34
Mental Health Grants - Clients Served	198
Low-income elderly	69

*Winnebago County  
Department of Public Health*

**Leadership Team**

---

J. Maichle Bacon, MPH  
Public Health Administrator

Debbie Anderson, BS  
Management Services

Sheila Kloster, BS, CM  
Operations

Monique Mosolf, MSW, MPH  
Health Support

Ginny Penzi- RN, MBA  
Community Health Promotion

Lee Sanderson-Eads, RN, MBA  
Disease Control

Larry Swacina, MS, RS, CIH  
Environmental Health

Michael Thomas, DO, MPH & TM  
Epidemiologist

Nancy Westphal, RN, MBA  
Clinical Health

**CLINICAL HEALTH**

**Women's Health:**

Total Visits	12,915
Unduplicated Clients	5,360
Pregnancy Tests:	
<i>Negative</i>	2,277
<i>Positive</i>	1,218
Breast & Cervical Cancer Screening	214

**Pediatrics:**

Peds Served	11,641
Immunizations	9,606
Exams	1,810

**COMMUNITY HEALTH PROMOTION**

**Audio Visual:  
(Pre-K through 12)**

Vision	15,423
Hearing	14,036

**Dental:**

School-based Dental Exams	5,451
Oral Health- People Served	3,489

Flu Shots 20,330

Violence Prevention Participants 1,670

Pneumonia Shots 2,683

Parents Again 99

Lymerix Shots 47

Hepatitis B Shots 614

Chem. Screenings 1,137

Blood Pressures 2,012

Cholesterol Screenings 1,400

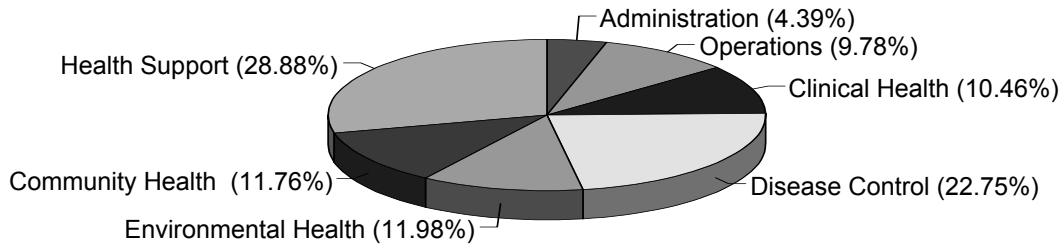
Prostate Screenings 240



**FINANCIAL FIGURES**

**Unaudited Statement of Disbursements**

Actual 2000



<i>Year from 10/1/99 through 9/30/2000</i>	<b>ACTUAL 2000</b>
<b>RECEIPTS</b>	
TAXES	2,193,170
FEEES	1,380,197
FEDERAL, STATE & LOCAL GRANTS	6,153,262
MISCELLANEOUS	5,445
<b>Total receipts</b>	<b>\$9,732,074</b>
<b>DISBURSEMENTS</b>	
PERSONNEL	5,718,373
SUPPLIES	585,514
CONTRACTUAL	1,994,744
CAPITAL OUTLAY	189,709
INTERNAL SERVICES	992
<b>Total disbursements</b>	<b>\$8,489,332</b>

**Unaudited Statement of Receipts**

Actual 2000

